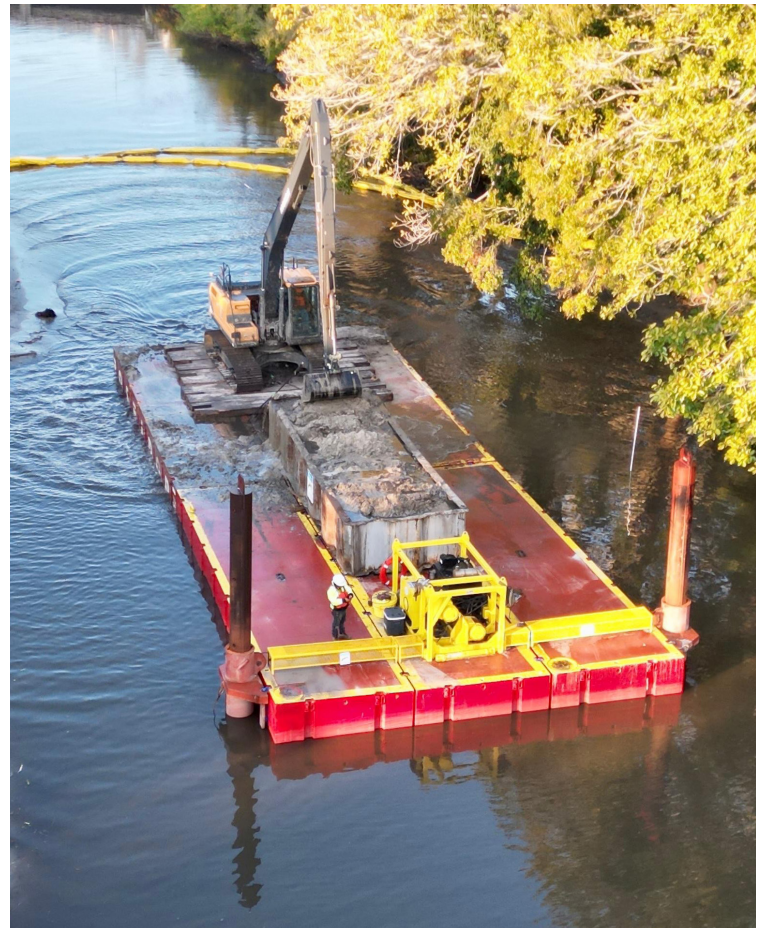
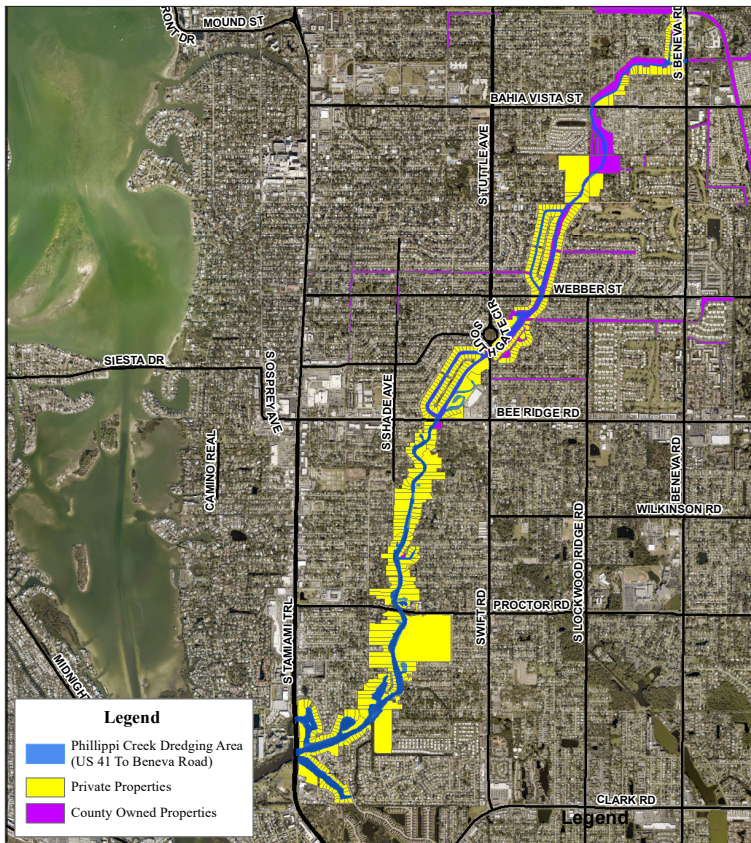


PHILLIPPI CREEK DREDGE PROJECT

Updated March 18, 2026

Sarasota County is moving forward with a major stormwater project to dredge approximately seven miles of Phillippi Creek, from the creek's mouth to South Beneva Road. This project is intended to improve stormwater drainage in adjacent communities and reduce the potential for flooding.

PHILLIPPI CREEK IMPACT AREA EAST OF U.S. 41



Scan the QR code for
more information or visit
scgov.net/phillippicreek




Sarasota County

TOTAL INVESTED/COMMITTED

1. Community Development Block Grant - Disaster Recovery:

- Disaster Recovery (CDBG-DR) funding from the U.S. Department of Housing and Urban Development (HUD), is part of Sarasota County's Resilient SRQ program, supporting long-term recovery from the 2024 storms Debby, Helene and Milton.

Funds applied for: \$45 million

- On June 4, 2025, HUD approved Sarasota County's action plan, identifying this project as a direct allocation.
- On June 30, 2025, Sarasota County executed the grant agreement and returned it to HUD for county execution.
- On July 9, 2025, HUD returned the countersigned grant agreement, officially obligating the funds to Resilient SRQ.

HUD Environmental Review Process - Completed

This federally required review ensures the project will not negatively impact the environment or public health.

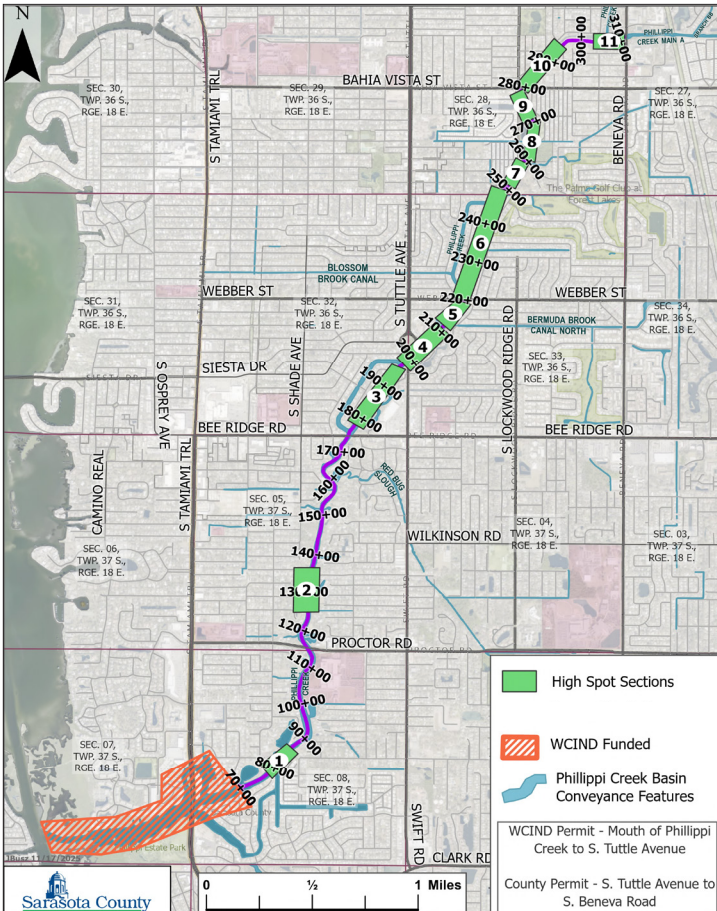
2. West Coast Inland Navigation District (WCIND)

Funds available **\$3 million**

3. Sarasota County Stormwater Environmental Utility

Funds available **\$16 million**

PHILLIPPI CREEK HIGH-SPOT DREDGING SECTIONS



PROJECT PHASES

Phase 1: High-spot Dredging (South Tuttle Avenue to South Beneva Road):

- Managed by Sarasota County to address critical areas of sedimentation between South Tuttle Avenue and South Beneva Road.
- The Phase 1 dredging will provide a 50 feet wide by 4 feet deep Mean Low Water (MLW), along the creek centerline.
- U.S. Army Corps of Engineers (ACOE) Permit (Permit No.:SAJ-2025-01036) issued on Oct. 8, 2025. The contract was approved by the Board of County Commissioners on Oct. 21, 2025.
- Funding:** Stormwater Environmental Utility funds.
- Next steps:** Construction began on Dec. 10, 2025. The contract period is 180 days. Phase 1 dredging completion is expected by the summer of 2026.

Lower (Tidal) Creek Dredging:

- Managed by WCIND to address sedimentation from the mouth of Phillippi Creek to approximately a quarter-mile east of U.S. 41.
- The Lower Creek dredging will provide a 30 feet wide by 4 feet deep MLW, along the creek centerline.
- Funding:** WCIND secured funding through County Navigation Improvement Funds (CNIF).
- Next Steps:** ACOE Permit (Permit No.: SAJ-2024-03986-JLA) was issued on Oct. 8, 2025. WCIND anticipates dredging will commence April 2026.

Phase 2: Maximum Allowable Dredge

- Managed by Sarasota County to address sedimentation between the limits of WCIND dredge and Beneva Road.
- Stormwater will request from the permitting agencies a continuous dredge between U.S. 41 and South Beneva Rd, including three oxbows and an area adjacent to the creek at South Gate. The proposed dredge will include a defined 10 foot offset from each bank to allow maximum sediment removal while maintaining a depth of 4 feet MLW, consistent with High Spot and Lower Creek dredging.
- Funding:** Resilient SRQ Program funds.
- Next Steps:** Submit permit applications to the Florida Department of Environmental Protection (FDEP) and ACOE, and solicitation of contractor bids. Phase 2 dredging anticipated to commence early 2027.

Project impacts

- Residential impacts: 44,818 homes within the Phillippi Creek basin.
- Commercial impacts: 2,108 properties within the Phillippi Creek basin.
- Residential and commercial properties located within Phillippi Creek basin will benefit from improved stormwater drainage.

Public meetings

- Four Board of County Commissioners Stormwater Workshops.
- Bi-weekly meetings with HOA community groups.

Scan the QR code for more information or visit scgov.net/phillippicreek

