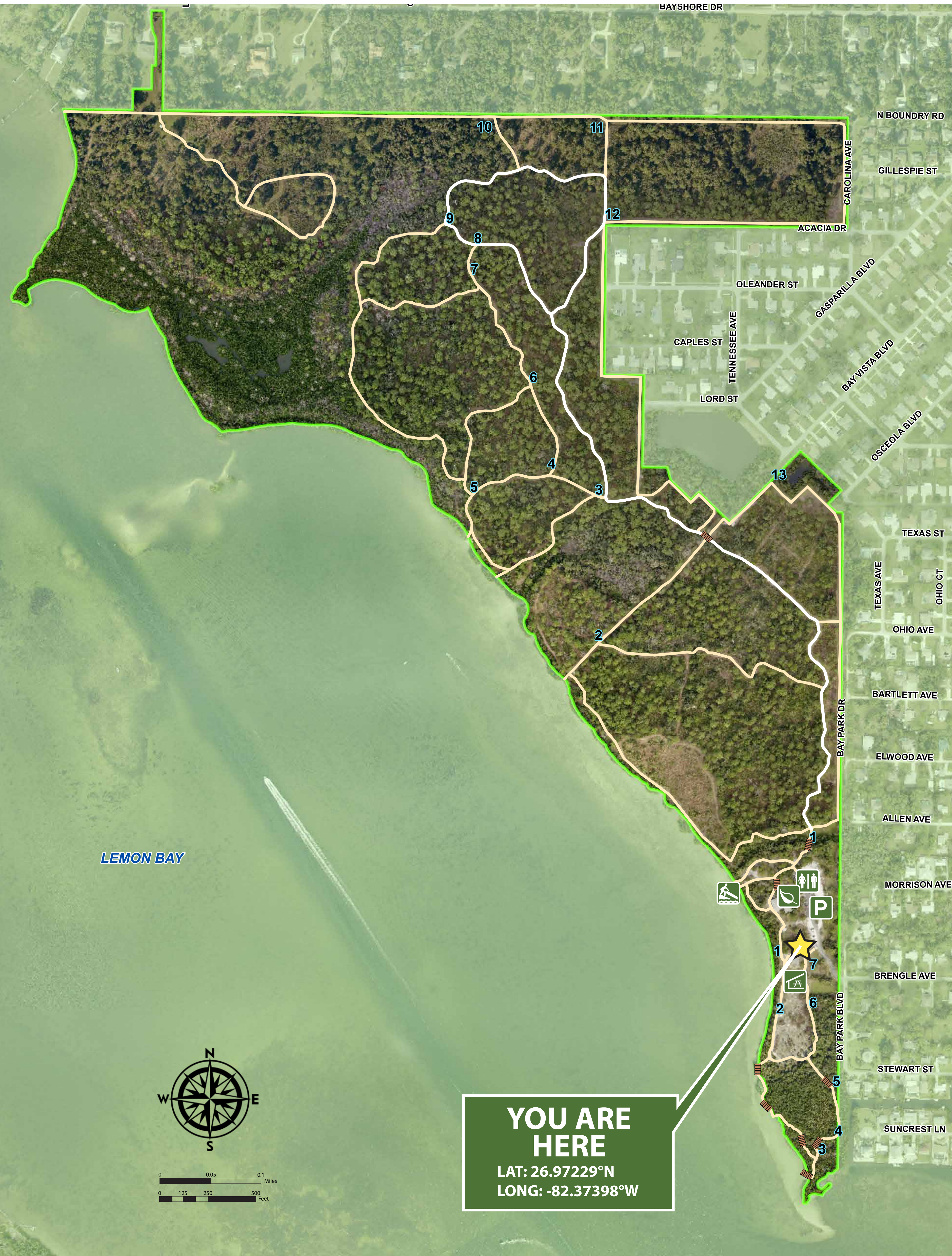


LEMON BAY PARK AND ENVIRONMENTAL CENTER

570 Bay Park Blvd., Englewood

Park Hours: 6 a.m. to Sunset



Get off the beaten path and explore Lemon Bay Park. Discover unpaved nature trails, an educational butterfly garden (courtesy of our dedicated volunteers), interpretive panels throughout the park, scenic boardwalks and a canoe/kayak launch.

Paddle out on Lemon Bay, or simply enjoy viewing Florida native plants such as cabbage palm (*Sabal palmetto*), live oak (*Quercus virginiana*), slash pine (*Pinus elliottii*) and mangroves. Head onto the Eagle Trail and look up – you might notice a bald eagle (*Haliaeetus leucocephalus*) or two.

The original 48 acres of Lemon Bay Park were acquired in 1986 as part of a \$20 million county bond referendum. After additional parcel purchases throughout the years, the park now consists of 210 acres.

As you hike, bike or paddle through the park, please keep in mind that all plants, animals and artifacts are protected. Be sure to take nothing but pictures, and leave nothing but footprints. To learn more about Lemon Bay Park, ask about our educational classes, guided nature walks and programs, which are offered year-round.



WE LOVE DOGS BUT WE LOVE WILDLIFE TOO!



Lemon Bay Park is dog-friendly. This means dogs are welcome, but must be leashed at all times. They should remain on a maximum 6-foot hand-held leash for their own safety and to protect the park's sensitive habitats and resident wildlife. Remember to clean up after your pet to stop the spread of disease to the natural wildlife and to be considerate to other visitors.

FOR YOUR SAFETY AND PROTECTION OF THE PARK

- Leave natural features, plants and animals undisturbed.
- Pack it in, pack it out. Please do not litter.
- Sheriff's Office:
Emergency: **911**
Non-emergency: **941-316-1201**
(report crime or incident)

TAKE A PHOTO OF THIS SIGN
as a safety and informational reference!

- | | | | |
|-----------------|----------------------|----------------|------------------|
| Eagle Trail | Canoe/kayak launch | Picnic shelter | Boardwalk/bridge |
| Trail - unpaved | Environmental center | Restrooms | Boundary |
| Trail marker | Parking | | |

Sarasota County prohibits discrimination in all services, programs and activities. View the complete policy at scgov.net (keywords ADA Compliance). This map is produced from Sarasota County GIS, and is representative information only. This county does not warranty, guarantee, or assume any responsibility for geographic information completeness and/or accuracy. This map should not be used as a guide for navigation. Copyright © SCGIS 2020.

IT STARTS IN
PARKS

Call 311 | scgov.net/parks | [@SRQCountyGov](https://www.facebook.com/SRQCountyGov)

Mission: To provide clean, safe and inclusive parks with diverse opportunities for all.

