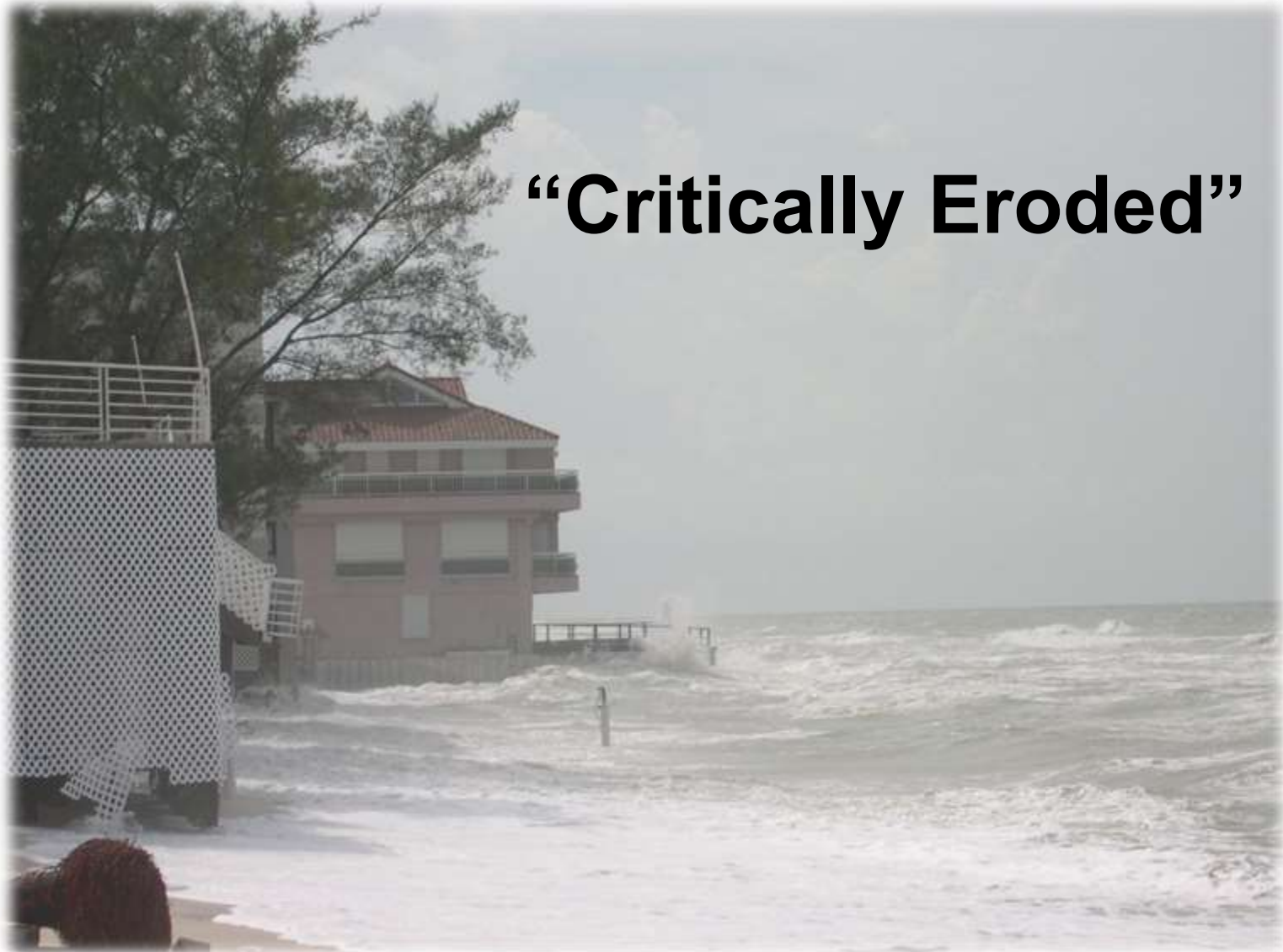




**Post Disaster
Redevelopment Plan
2014**

**OVER 2/3's of Sarasota County's
Gulf shorelines are designated
CRITICALLY ERODED
by the State of Florida**

“Critically Eroded”



Hurricane Ike – Sept 14, 2008

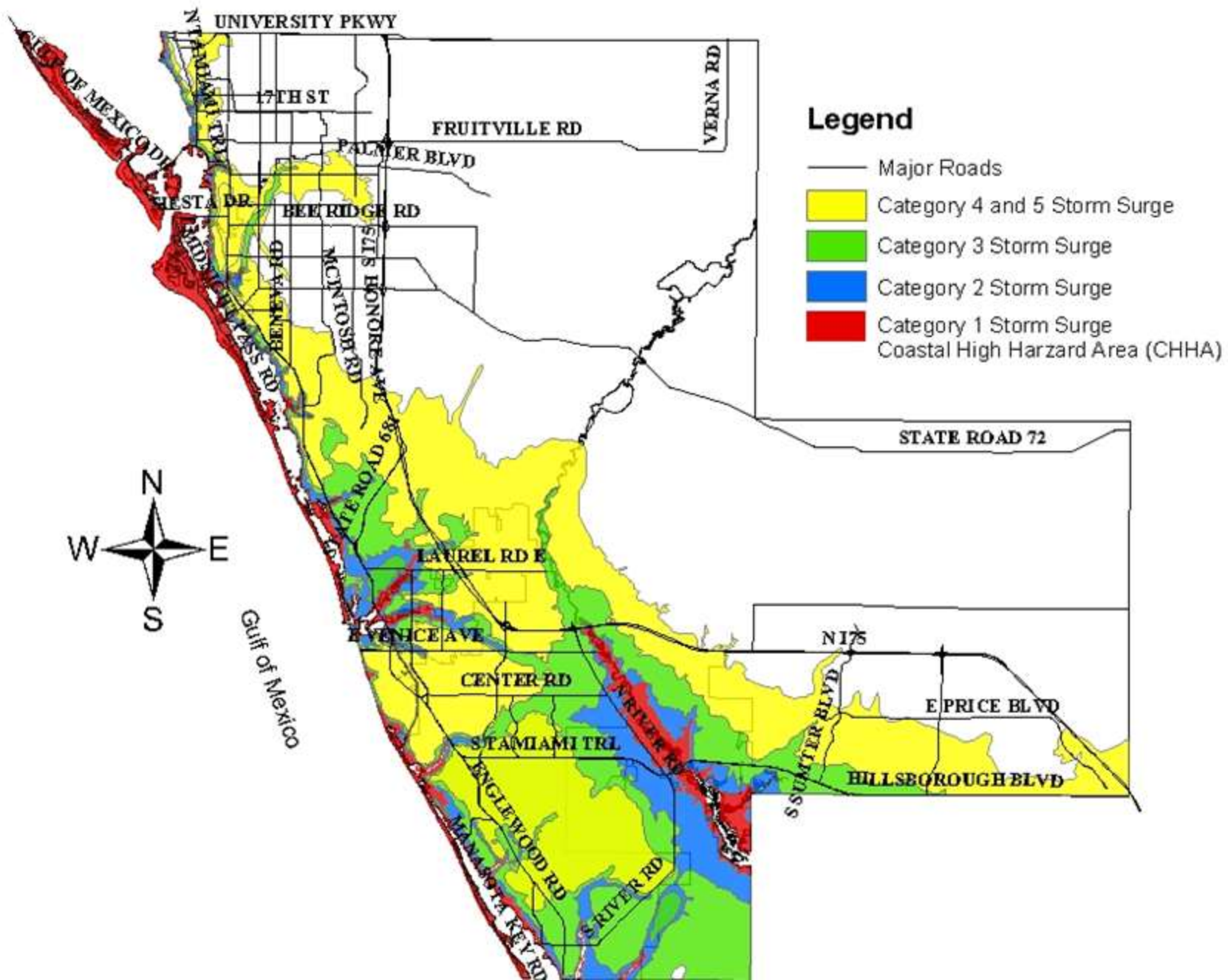


Galveston Island Hurricane Ike 2008





Sarasota County Hurricane Evacuation Map



Current Problem Statement

How should Sarasota County redevelop after a catastrophic storm event hits?

Post Disaster Redevelopment Plan (PDRP)



Why Prepare a PDRP?

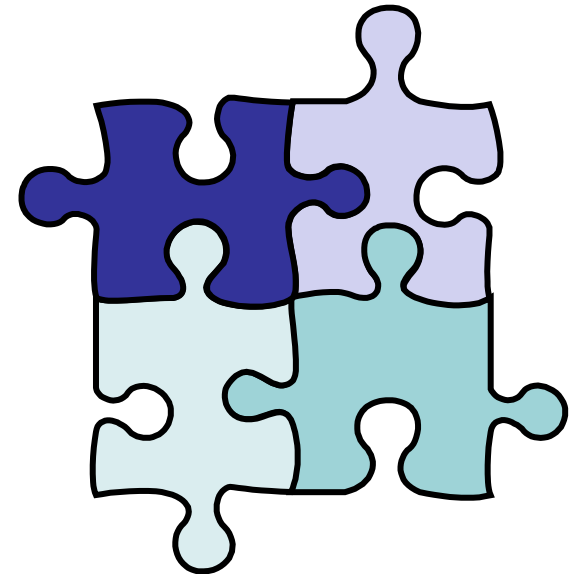
- Make proactive decisions with community input (instead of reactive, in the midst of panic and chaos)
- Avoid unintended consequences (Walton County shoreline hardening)
- Minimize future repetitive loss
- Maintain the vision/look/feel of future Sarasota County for future generations

Why Prepare a PDRP?

- Minimize loss of tax base
- Avoid mass exodus of local businesses
- Minimize down time for tourism
- Re-build smarter, more sustainable
- Plan ahead for temporary housing, solid waste facility, etc.
- **\$\$\$\$\$\$ - save the community millions**

Original Effort

- 2007 Contract with CSA International
- Stakeholder Working Group formed
 - Four subgroups:
 - Housing and planning
 - Infrastructure and public facilities
 - Environmental restoration
 - Economic redevelopment
- Initial Draft – End of 2009



PDRP – Main Components

- Vulnerability Analysis
- Institutional Capacity
- Implementation
- Action Plans (4 subgroup areas)
- Communications Plan
- Financing

Revise/finalize draft chapters

- Revise language where needed
- Add specificity where lacking
- Update information that is not current
- Evaluate action steps for feasibility

Chapter 5

Housing and Planning Chapter

- Description of Redevelopment Focus Areas
- Pre- and Post- Disaster Action Plan
- **All comes down to re-build issue**

Chapter 5

Key issues raised by Barrier Island reps

- Level of certainty for rebuild issue – scenario process mapping
- Planning/decisions made pre-disaster (rather than amidst post-disaster chaos)
- Rapid/streamlined permitting process
 - Assisting residents with updated records
 - Requesting assistance from out-of-area inspectors

Next Steps

- Engage Municipalities
- Continue addressing barrier island issues
- Present to County Commission – January 2015 adoption



Public Outreach

- Major effort, critically important
- Issue fraught with legal, political, social, economic, environmental issues
- **Communication is KEY**



THANK YOU!

Questions, comments, suggestions?

- Email us at **PDRP@scgov.net**
- Check our website at **<https://www.scgov.net/>**
Click the link to **Services A-Z** and select
Post-Disaster Redevelopment Plan

Sarasota County

