

# MANASOTA SCRUB PRESERVE

2695 Bridge St., Englewood | Park Hours: 6 a.m. to Sunset

## WELCOME!

Manasota Scrub Preserve's 179 acres are home to one of the few remaining scattered pockets of scrub habitat, pine flatwoods and seasonal wetlands. This preserve was purchased by Sarasota County through the Environmentally Sensitive Lands Protection Program. The system of trails and a boardwalk offers picturesque views not commonly found within a suburban community and a diverse set of natural communities.



Scrub habitat



## NATURE TRAILS

Benches along the preserve's recommended trails are provided for visitors to unwind and enjoy the sights and sounds of nature. Trails are primitive and easy for most visitors and are numbered as indicated on the map. Portions of these trails may flood during the summer months and after extended periods of rainfall.

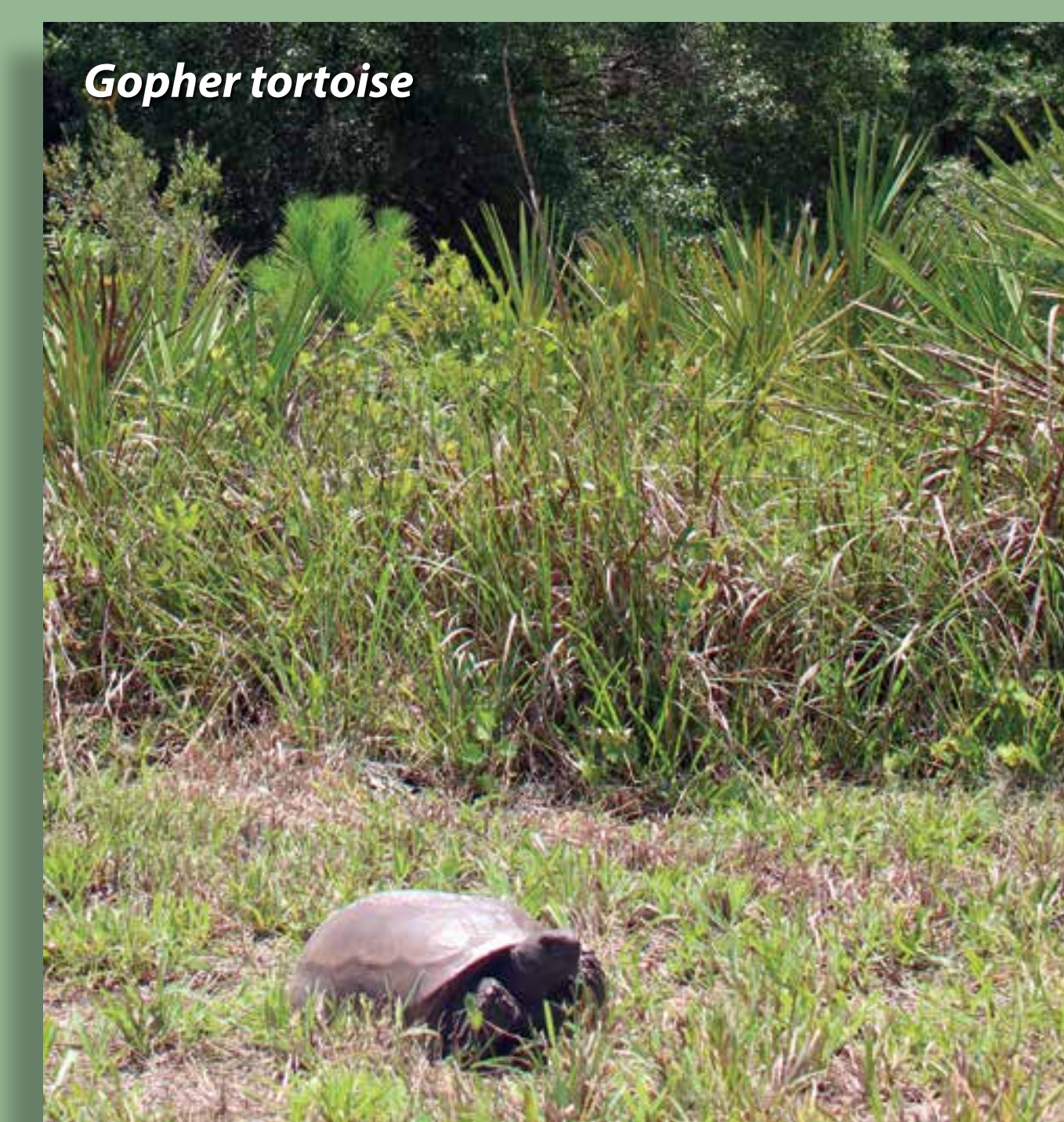
Wildlife viewing may include gopher tortoise, swallow-tailed kite, great horned owl and perhaps an occasional bobcat. You may encounter an assortment of butterflies and winter migrating songbirds. Native flowering plants found throughout the landscape include tarflower, blazing star and wild pennyroyal. The best time of year to view an abundance of wildflowers is in the spring and fall.

## WHAT'S IN THAT HOLE?

The gopher tortoise is found in the Southeast region of the United States. Although they can live to be more than 100, the average lifespan is between 40 and 60 years. Gopher tortoises dig burrows ranging from 10 to 15 feet long and 6 to more than 10 feet deep, often ending at the water table. Their burrows often house a large range of other species including snakes, amphibians and small mammals.



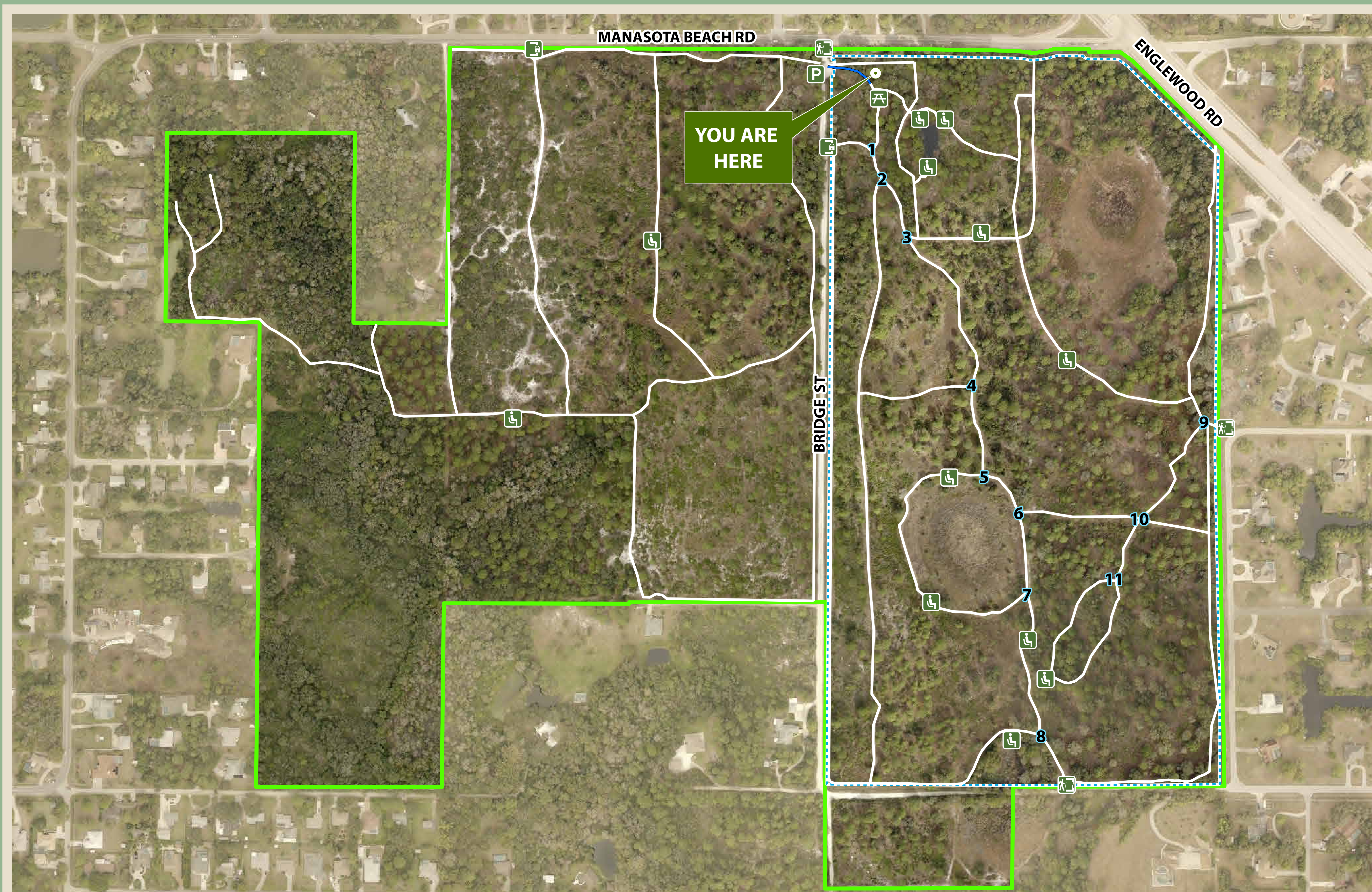
Tarflower



Gopher tortoise

## FOR YOUR SAFETY AND PROTECTION OF THE PRESERVE

- This preserve is open from 6 a.m. to sunset.
- Please leave all natural features, plants and animals undisturbed.
- Pack it in, pack it out. Please do not litter.
- Please take valuables with you and lock your vehicle.



Boardwalk	Dog-friendly area	Gate - Walk Through	Trail - Unpaved
Bench	Entrance	Parking	Trail marker
Boundary	Gate - No Access	Picnicking	

**YOU ARE HERE** LAT: 27.02052°N  
LONG: 82.39351°W

Sarasota County prohibits discrimination in all services, programs and activities. View the complete policy at [scgov.net/ADA](http://scgov.net/ADA). This map is produced from Sarasota County GIS, and is representative information only. This County does not warranty, guarantee, or assume any responsibility for geographic information completeness and/or accuracy. This map should not be used as a guide for navigation. Copyright © SCGIS 2017.

**Too close for comfort.**  
Please do not disturb wildlife and keep dogs on designated trails.

### WHERE CAN I BRING MY DOG?

The portion of the preserve east of Bridge Street is dog-friendly. Stroll the trails with your dog and enjoy the sights and sounds of this natural setting.

### WE LOVE DOGS BUT WE LOVE OUR WILDLIFE TOO!

For both the dog's safety as well as the preserve's wildlife, please keep dogs leashed and on designated trails at all times. Do not disturb wildlife by allowing your dog to bark at or approach the preserve's wildlife as it will distress the animals and possibly create a safety risk for your dog. Remember to clean up after your pet to not only stop the spread of disease to the natural wildlife but to be considerate to other visitors.

### BOBCAT OR A PANTHER?

This mysterious creature seen strolling through the brush is a bobcat. It is only found in North America. It has a "bobbed," or shorter, tail unlike its cousin the Florida panther, which has a long tail. Bobcat tracks are more often seen than the animal itself. The tracks of the fore and hind paws are about 2 inches long and slightly less wide with four toes and no claw marks.

Scrub-jay

### WHAT DOES PRESCRIBED FIRE HAVE TO DO WITH THE FLORIDA SCRUB-JAY?

Native habitat restoration is underway in the preparation for the return of the precious Florida scrub-jay and to enhance the preserve for other native wildlife. Florida scrub-jays prefer the height of scrub oaks and shrubs to be between 1 and 2 meters, mixed with open sandy patches to cache acorns. To attract scrub-jays, Sarasota County uses prescribed fire to mimic natural recurring fire, reduce the vegetation height, create open sandy patches and maintain healthy pine flatwoods and scrub habitats.

**TAKE A PHOTO OF THIS SIGN**  
as a safety and informational reference!