

How to Drive in a Roundabout



Slow Down:

Driving speeds in roundabouts are 20 mph or less.



Lane Choice:

Drivers must make the appropriate lane choice, based on their destination, prior to entering a multilane roundabout. As in a standard intersection, use the left lane to make left-turns, U-turns, or straight-ahead movements; use the right-lane to make right-turns or straight-ahead movements (see charts below). Never change lanes, pass, or overtake another vehicle after entering a roundabout.



Yield Principle:

When preparing to enter a roundabout, yield to all traffic in all lanes already circulating within the roundabout.



Large Vehicles:

Give special consideration to trucks, trailers and other large vehicles. Never pass or drive adjacent to large vehicles within a roundabout.



Emergency Vehicles:

Do not impede emergency vehicles. If you are within a roundabout when an emergency vehicle approaches, move through, exit, and then pull over.



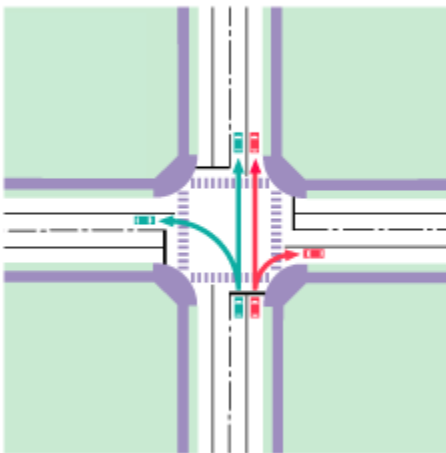
Pedestrians:

All pedestrians must cross at the designated crosswalks. Although vehicles are required to stop for pedestrians, always exercise caution when crossing.

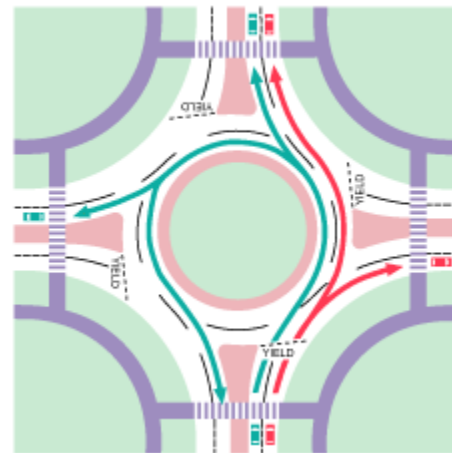


Bicyclists:

Bicyclists are encouraged to walk their bikes and use the pedestrian crosswalks. Only experienced bicyclists should ride within the roundabout.



Standard Intersection



Multilane Roundabout