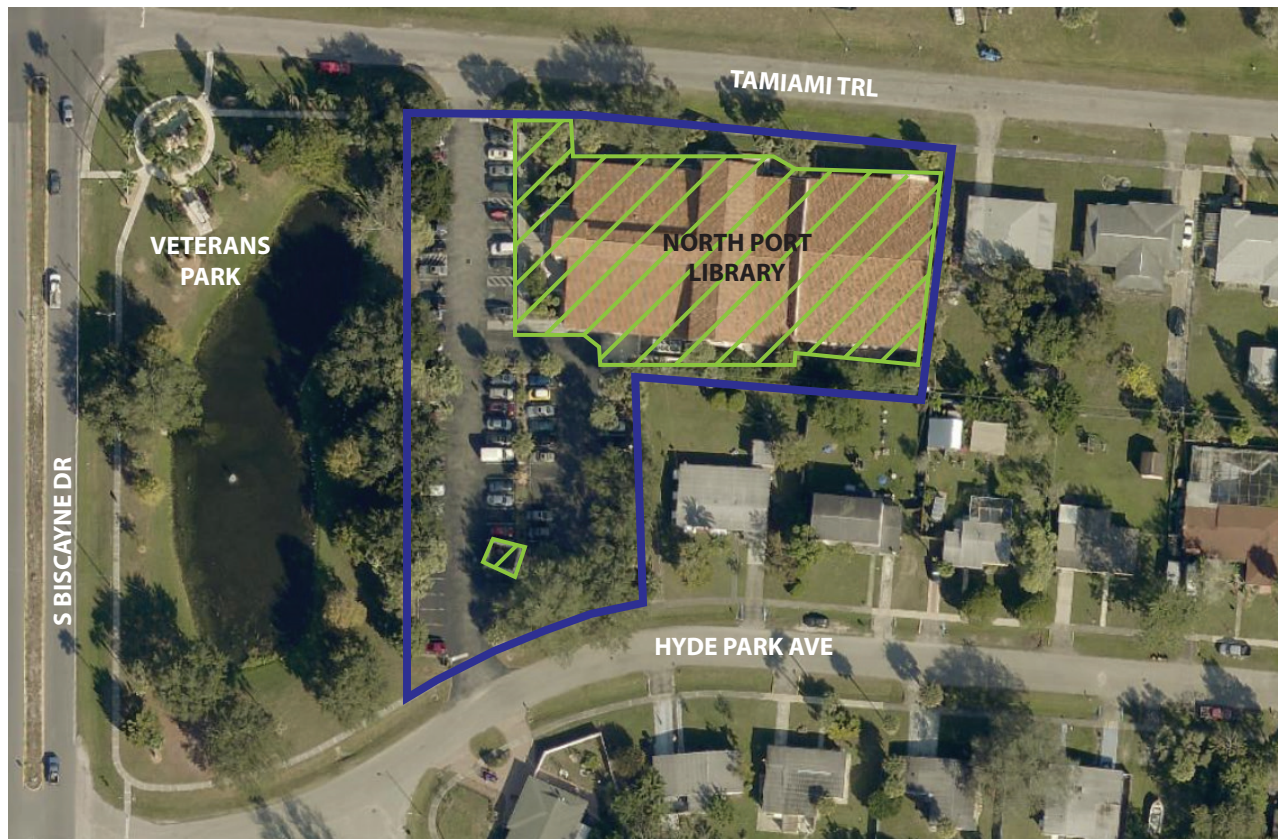


# NORTH PORT LIBRARY

## COUNTY FACILITY RULES

### The following is prohibited:

1. Engaging in any activity prohibited by law.
2. Littering.
3. Activities or behaviors which are likely to result in injury or harm to others, including visitors or employees.
4. Activities or behaviors which are likely to result in damage to County property.
5. Tampering with or unauthorized use of interior or exterior building or facility systems or devices, including but not limited to electrical, plumbing, locks, doors, or cameras.
6. Possession of weapons, with the exception of firearms as defined in Chapter 790, Florida Statutes or as allowed by a park rule. Any person found to be in possession of a weapon without the proper state-issued license is subject to expulsion.
7. Unauthorized leaving or storing of personal property. All unattended property will be removed.
8. Use of insulting or fighting words which by their very utterance inflict injury or tend to incite an immediate breach of the peace.
9. Disruptive or unsafe behavior, including conduct which intentionally interferes with employees in the performance of their duties or intentionally interferes with the proper use of the county facility by others.
10. Being under the influence of any controlled substance or intoxicating liquor or beverage.
11. Possessing, selling, distributing, or consuming any alcoholic beverage, except as allowed by a permit, at an approved event, or allowed by a park rule.
12. Blocking access to the building, including doorways, walkways, ramps, parking access, or steps.
13. Remaining in a building, or remaining in its attached covered areas, doorways, walkways, ramps, or steps after posted hours of operation or after the conclusion of an "after hours" public meeting. These areas will be delineated as the "Green Zone" or "Safe Zone" on a site map.



 SEE RULE 13

 PROPERTY BOUNDARY

REVISED 7/11/2016

## HOURS OF OPERATION

Monday, Thursday through Saturday  
10 a.m. to 5 p.m.

Tuesday and Wednesday  
10 a.m. to 8 p.m.

Sunday  
Closed

  
Sarasota County  
scgov.net | 941.861.5000