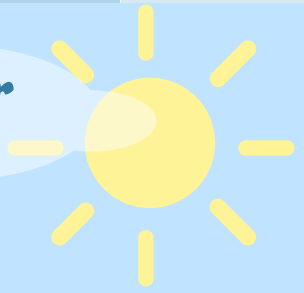


Earth Day 2016

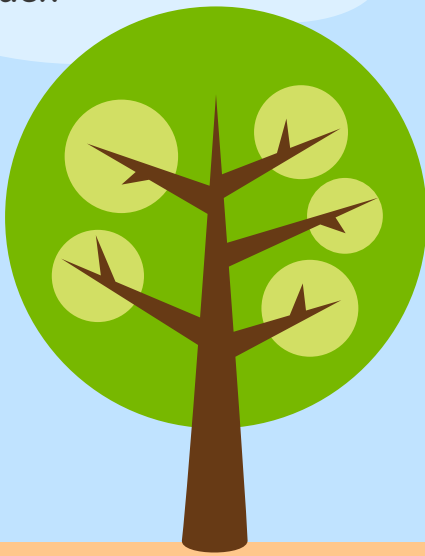
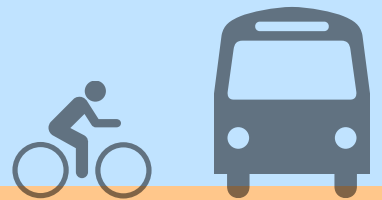
Sarasota County: Local Action for a Global Impact

Clean Air



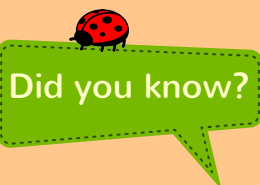
Sarasota County's air quality typically measures in the "GOOD" range of the EPA Air Quality Index⁽¹⁾

1 out of 10 commuters in the county helped to reduce auto emissions by carpooling, biking, walking, or taking the bus to work⁽²⁾



There are **45** edible gardens at local schools⁽³⁾

Healthy, Local Food



Did you know?

Sarasota was the **FIRST** Florida county to have a dedicated Community and School Gardens Coordinator⁽⁴⁾

- 7** farmers markets
 - 4** farmstands
 - 4** buyers clubs
 - 8** grocery stores
 - 37** restaurants/caterers
- offer **locally grown produce**⁽⁴⁾

Consumer Awareness



of waste collected in Sarasota County during 2014 was recycled⁽⁴⁾

53%



32% of consumers in Sarasota County used environmentally friendly products in the last 6 months⁽⁵⁾

↓ 3.8%

Average residential electricity use 2005 to 2014⁽⁴⁾

(4)



There are **113,000**

acres of environmentally protected lands in Sarasota County⁽⁴⁾

A Greener Environment

In 2015, Sarasota County was certified as the **GREENEST** county in the state by the FGBC's Green Local Government Program⁽⁴⁾



227

businesses participate in the Sarasota County Green Business Partnership⁽⁴⁾

Our Water Resources

of rain barrels bought by county residents since 2009:
2,500⁽⁴⁾

Per capita water usage

↓ 31%

from 1991 to 2014⁽⁴⁾

Did you know?

Florida-Friendly Landscaping™ helps reduce stormwater runoff. The program which began locally in 2006 with only **6** recognized yards, now has **122** residential and **83** commercial recognized yards.⁽⁴⁾

Total seagrass coverage in Sarasota Bay has increased by **4,579** acres from 1988 to 2014⁽⁶⁾

Sources:

- (1) Sarasota County Draft Comprehensive Plan, Vol 2, 2016
- (2) U.S. Census Bureau American Community Survey 2010-2014 5-year estimates
- (3) University of Florida/IFAS Extension - Sarasota County, 2016
- (4) Sarasota County Sustainability Assessment Report, 2015
- (5) Esri Community Analyst consumer surveys compiled by GfK MRI, 2015
- (6) Sarasota Bay Estuary Program, 2016