

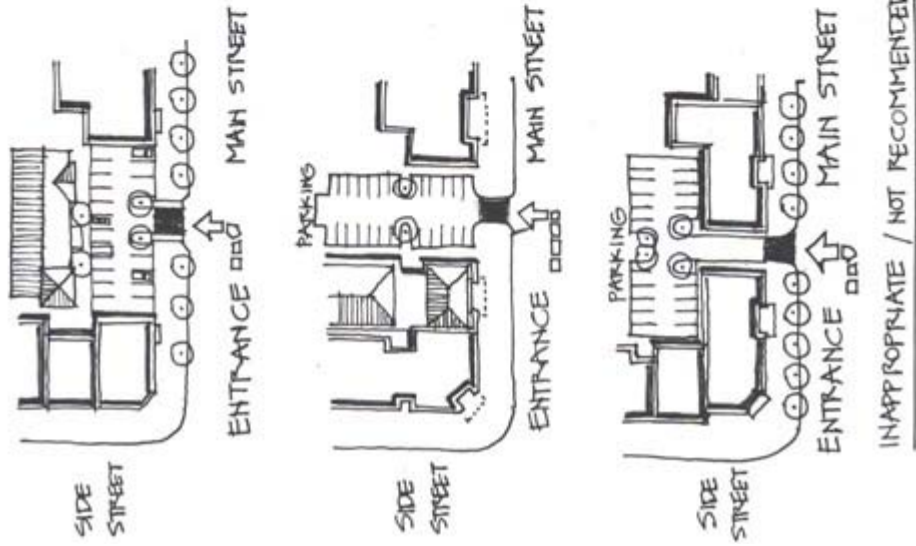
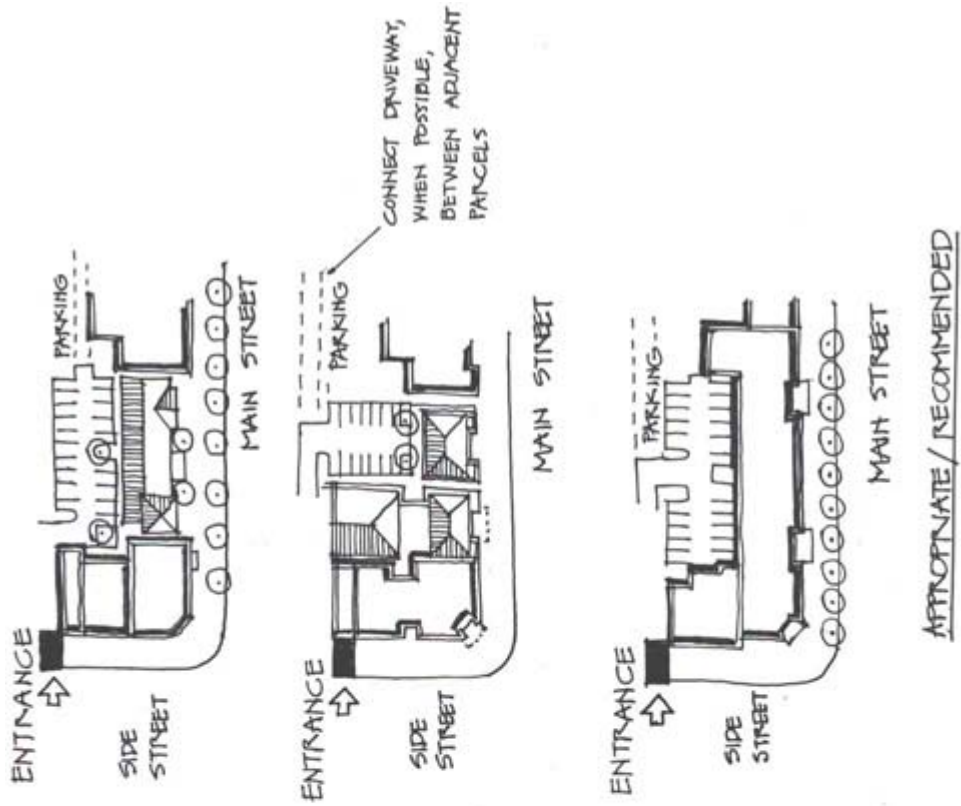
Architectural Design Guidelines Handbook

- Improve pedestrian traffic in front of retail.
- New development must direct vehicular access to side and rear streets.
- Off-site and angled parking are also acceptable in Town Center Area.
- Included are examples of proposed additions for in-fill development
- Refer to the existing configuration of Dearborn St to explore future development opportunities.

TRAFFIC, SITE ACCESS SITE SPECIFIC CONSIDERATIONS



CHAPTER SIX



Indian Mound Park





New house in Englewood with old Florida character



Existing commercial structure on Dearborn St.



Examples of Lee County Park Boardwalk