

Architectural Design Guidelines Handbook

- Simple Cottage & Defining Elements
- Architectural Elements
 - Structure – Mostly wood Frame
 - Roof & Overhang
 - Porch – Front view
 - Crawl Space – for Ventilation
- Structure, Yard fence, Exterior Elements, Trellis
- Decorative Elements
- Design Considerations with regard to lighting, signs, and use of color

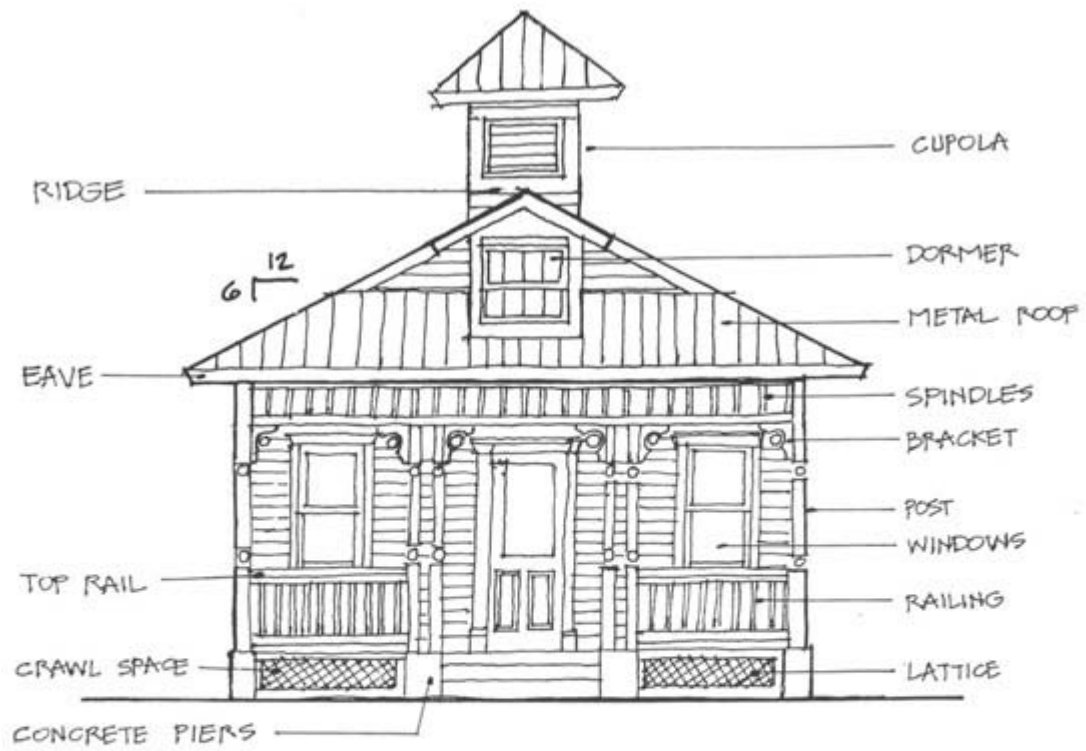
ARCHITECTURAL ELEMENTS



CHAPTER THREE

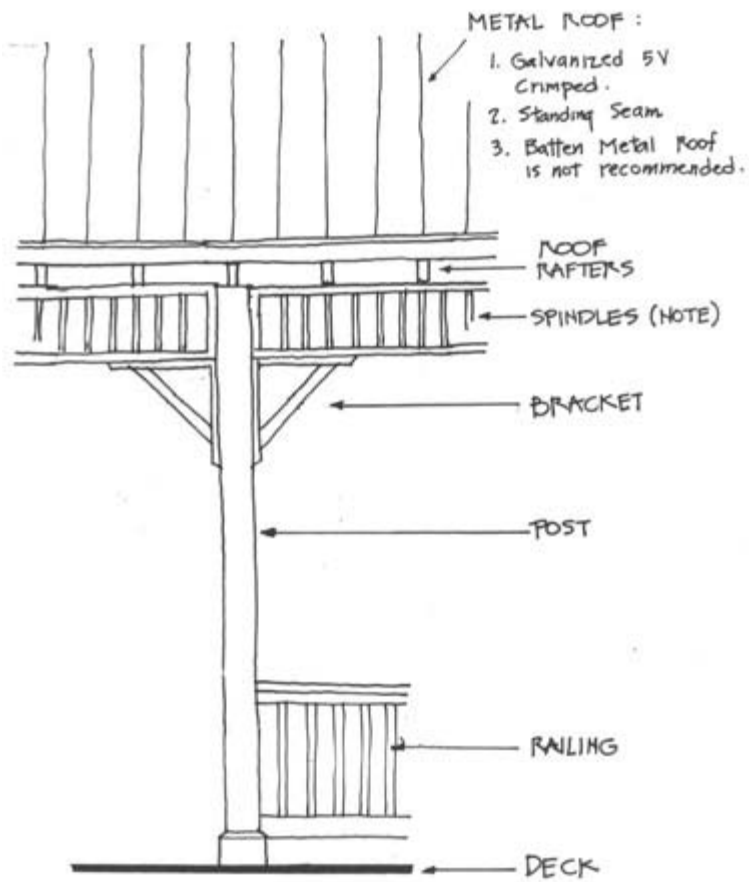


• DEFINING ELEMENTS •



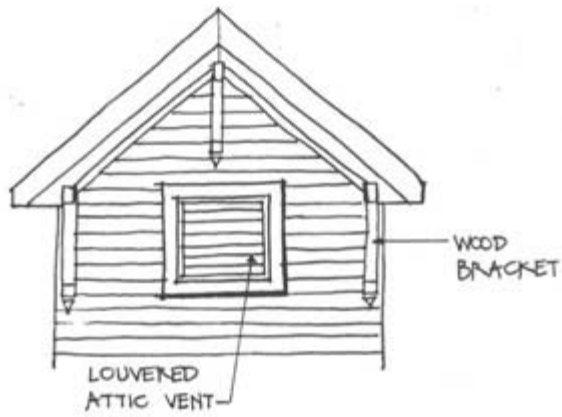
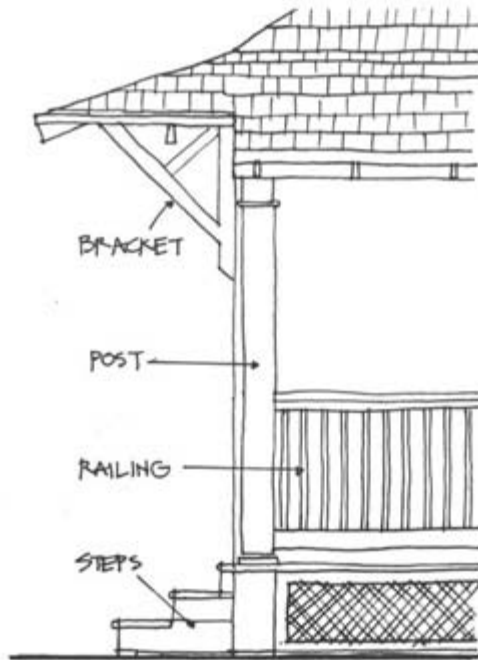
• DEFINING ELEMENTS •

MORE DECORATIVE STYLE IS
 CHARACTERISTIC TO SOUTH FLORIDA,
 KEY WEST, OR CARIBBEAN AREA.

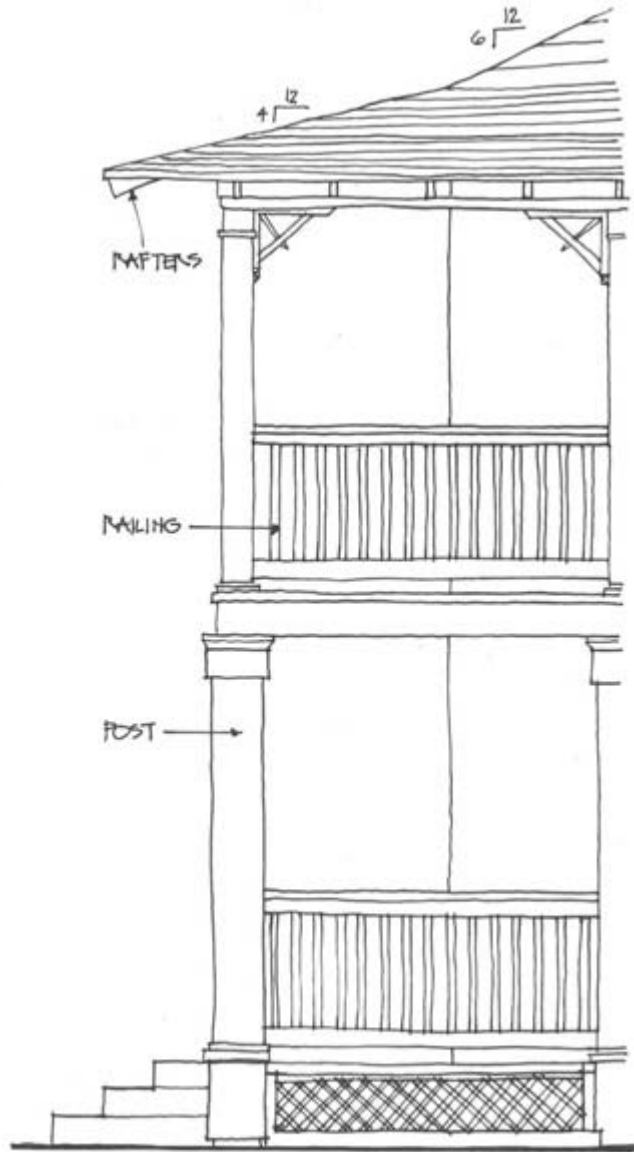


• ARCHITECTURAL ELEMENTS •

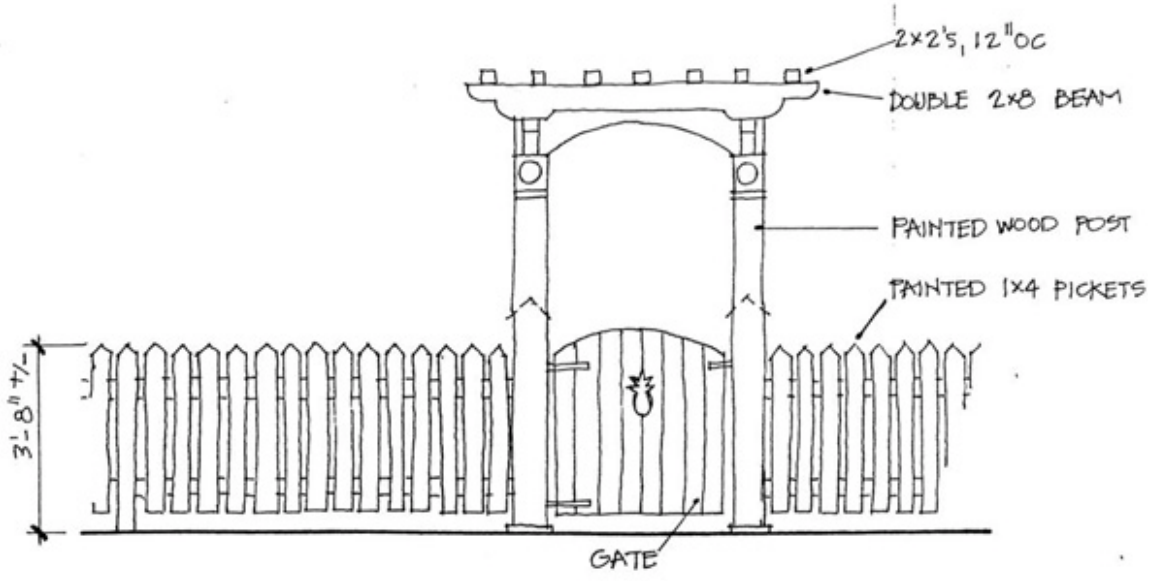
SPINDLE NOT REPRESENTATIVE FOR THIS REGION, BUT MAY NEED TO BE INCLUDED IN NEW CONSTRUCTION WITH HIGHER EAVE HEIGHT.



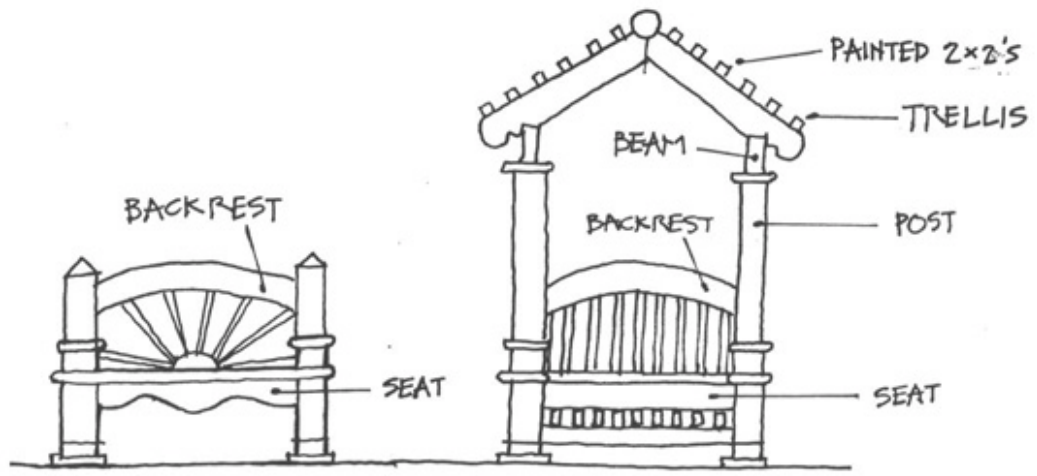
ARCHITECTURAL ELEMENTS



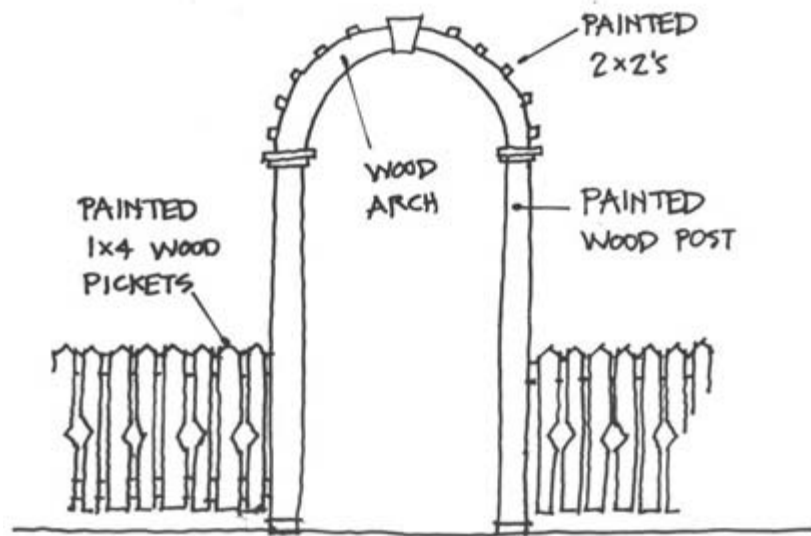
EXAMPLE OF TWO-STORY PORCHES



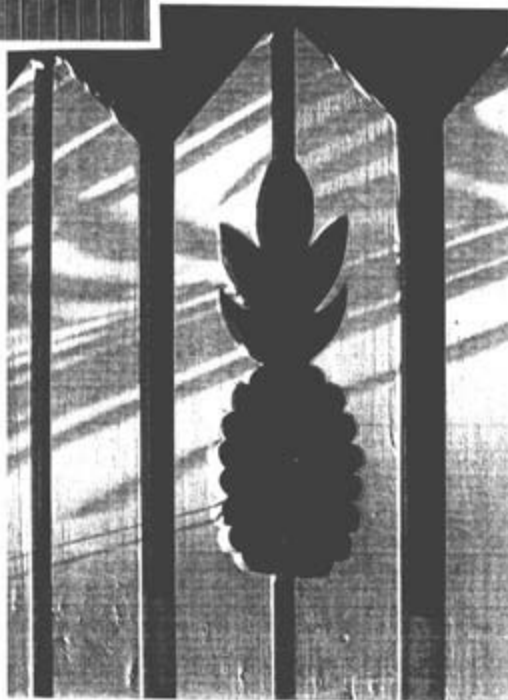
FENCE DESIGN



BENCH DESIGN



FENCE AND ARCHWAY ENTRY





Architectural Design Guidelines Handbook

LIGHTING:

- Lighting to be used as security function, Promote business after hours.
- Lighting should be selected to complement the historic theme.
- Light sources must be indirect lighting, and to highlight display windows.

SIGNS:

- Signs must contribute to the positive image of a store or business as well as enhance the Town Center, and should reflect the theme characteristics of the Town Center.
- Signs must comply with the sign ordinance adopted by the Sarasota County.
- Use a consistent sign pattern along a retail strip with signs aligned and equivalent in size. Inconsistent pattern will create confusion and is discouraged.
- Signs must be consistent in scale, size and location with the building articulation, not oversized or out of character with the building.

USE OF COLOR:

- The use of colors should relate to the adjacent buildings, the architectural character and must not contrast with the functional intent of the downtown.
- The range of color selection is very wide and can include:
 - o Simple scheme of natural materials (Galvanized roof material and pressure treated lumber, white picket fence or light color building trim, etc.)
 - o Pastel and more vibrant scheme of colors reminiscent of Key West style (shades of yellow, green, blue in harmony with the natural environment.
 - o Colors not recommended would be strong contrasting colors of black, purple, brown, or other schemes not associated with this architectural style.