



- IN THIS ISSUE:
- 01 **ALL GARBAGE IS LOCAL:**
A LOOK AT CONTAMINATION IN LOCAL RECYCLING PROGRAMS
- 02 **KEEP SARASOTA COUNTY BEAUTIFUL:**
2017 REVIEW
- 03 **DID YOU KNOW**

ALL GARBAGE IS LOCAL:

A LOOK AT CONTAMINATION IN LOCAL RECYCLING PROGRAMS



By Brian Usher, Solid Waste Collections Manager

I had a professor in college that would tell us that a weed is just a plant growing where you do not want it, such as your front yard, and that dirt is just soil located where you do not want it, such as your kitchen floor. Both items play an important role in the ecosystem, but when removed from their

native habitats and placed where they negatively affect our personal lives, they become a nuisance. This line of thinking can be applied to recycling. An item placed into a recycling container that is not a part of the local recycling program becomes a nuisance or contaminant. I know that sounds odd; just because an item is able to be recycled does not mean that it is acceptable to your community's recycling program.

In unincorporated Sarasota County in 2016, roughly 1,685 tons of material collected at the curb were considered contaminants or "non-program materials." These materials had to be removed by human sorters, loaded into a container, and sent to the landfill for disposal. The financial and environmental cost of additional handling and transporting of these contaminated materials accumulates over time.

The best way to prevent contamination is to become familiar with the Sarasota County recycling program. You can facilitate change throughout the community and be a part of the solution by engaging your neighbors and co-workers on our recycling program. If you are



reading this, you are obviously an engaged customer and we thank you. If you are not sure an item is part of our "Program Materials," please check the Solid Waste website or use the "What Goes Where" feature on our recycling app MyWaste.

"In unincorporated Sarasota County in 2016, roughly 1,685 tons of material collected at the curb were considered contaminants or 'non-program materials.'"



WHAT SHOULD NOT BE RECYCLED?

STYROFOAM



POTS & PANS



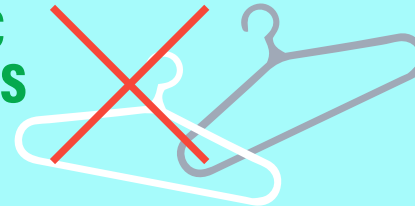
PLASTIC WRAP



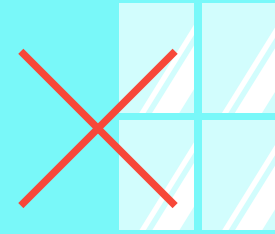
GARDEN HOSE



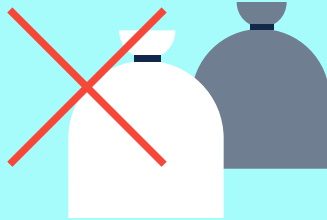
METAL AND PLASTIC HANGERS



PANE GLASS



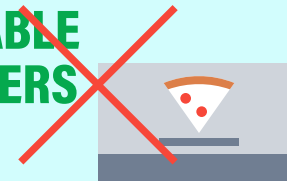
GARBAGE BAGS



EYEGASSES



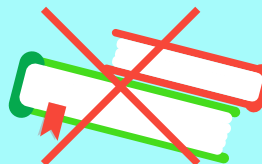
FOOD IN RECYCLABLE CONTAINERS



METALLIC GIFT WRAP



HARDBACK BOOKS



And there are more to learn about...Use the MyWaste App to see which items can and cannot be recycled.





KEEP SARASOTA COUNTY BEAUTIFUL: MID-YEAR UPDATE



By Wendi Crisp, KSCB Program Coordinator

Keep Sarasota County Beautiful volunteers have been busy during the first half of 2017!

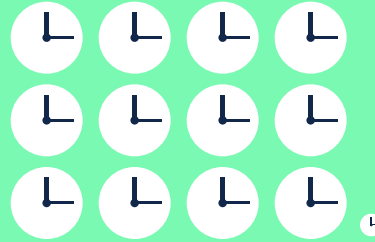
Nomination forms for the 29th Annual KSCB Volunteer Awards Recognition Dinner will be released in August and will be available online at <https://www.scgov.net/kscb>.

Make sure to recognize someone in your community!

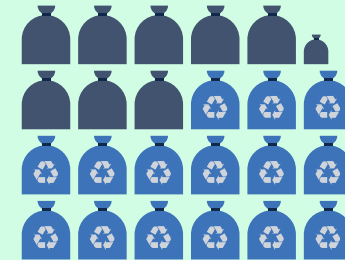
Volunteer opportunities are always available. Interested parties should visit <https://www.scgov.net/kscb>.

GREAT AMERICAN CLEANUP EVENTS (MARCH 25 & APRIL 22)

1,220
SERVICE HOURS



EACH CLOCK = 100 HRS



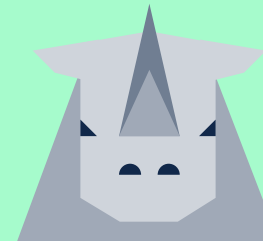
235
BAGS OF TRASH/
RECYCLABLES
COLLECTED

EACH BAG = 10 BAGS

2.9 TONS
OF TRASH AND
RECYCLED MATERIAL
COLLECTED



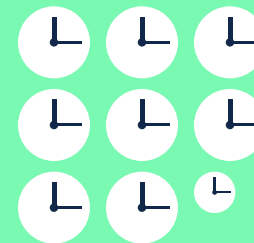
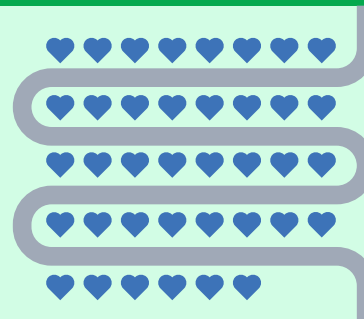
=



THE AVERAGE WEIGHT
OF ONE RHINOCEROS

ADOPTION PROGRAM QUICK FACTS (JANUARY-JUNE 2017)

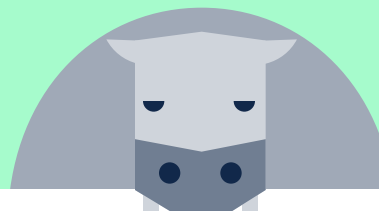
38
ADOPTION
PARTNER
GROUPS



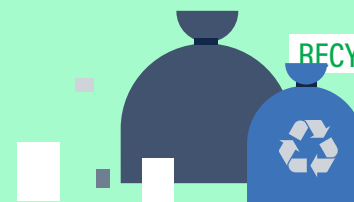
847.5
SERVICE HOURS

EACH CLOCK = 100 HRS

THE AVERAGE WEIGHT OF
ONE HIPPOPOTAMUS



=



3.2 TONS
OF TRASH AND
RECYCLED MATERIAL
COLLECTED



CONTACT US



941-861-5000



ContactCenter@scgov.net



www.scgov.net

#DYK (DID YOU KNOW)

In our continuous efforts to communicate with you, we now have a solid waste app service called MyWaste available to all Sarasota County residents.

MyWaste is your go-to source for all garbage, recycling and hazardous waste information. The **What Goes Where** function provides information on how to recycle or otherwise dispose of over 2,000 items. In just a few clicks you can learn to be a better recycler, find your solid waste **collection schedule**, and use the **Report A Problem** function to communicate any type of solid

waste service issues or other questions you have without having to spend time waiting on the phone. MyWaste also allows us to communicate directly with you. We will send you notices about events, collection service delays, changes, and other important information about our solid waste program.

What are you waiting for?



Download MyWaste today, available for free in the App Store and Google Play.

