

Siesta Beach Access #7 Area



Public Meeting
October 29, 2009

Introductions

- Welcome and Introductions
- Meet your neighbor
- Share with one another why you are attending tonight's meeting



Agenda

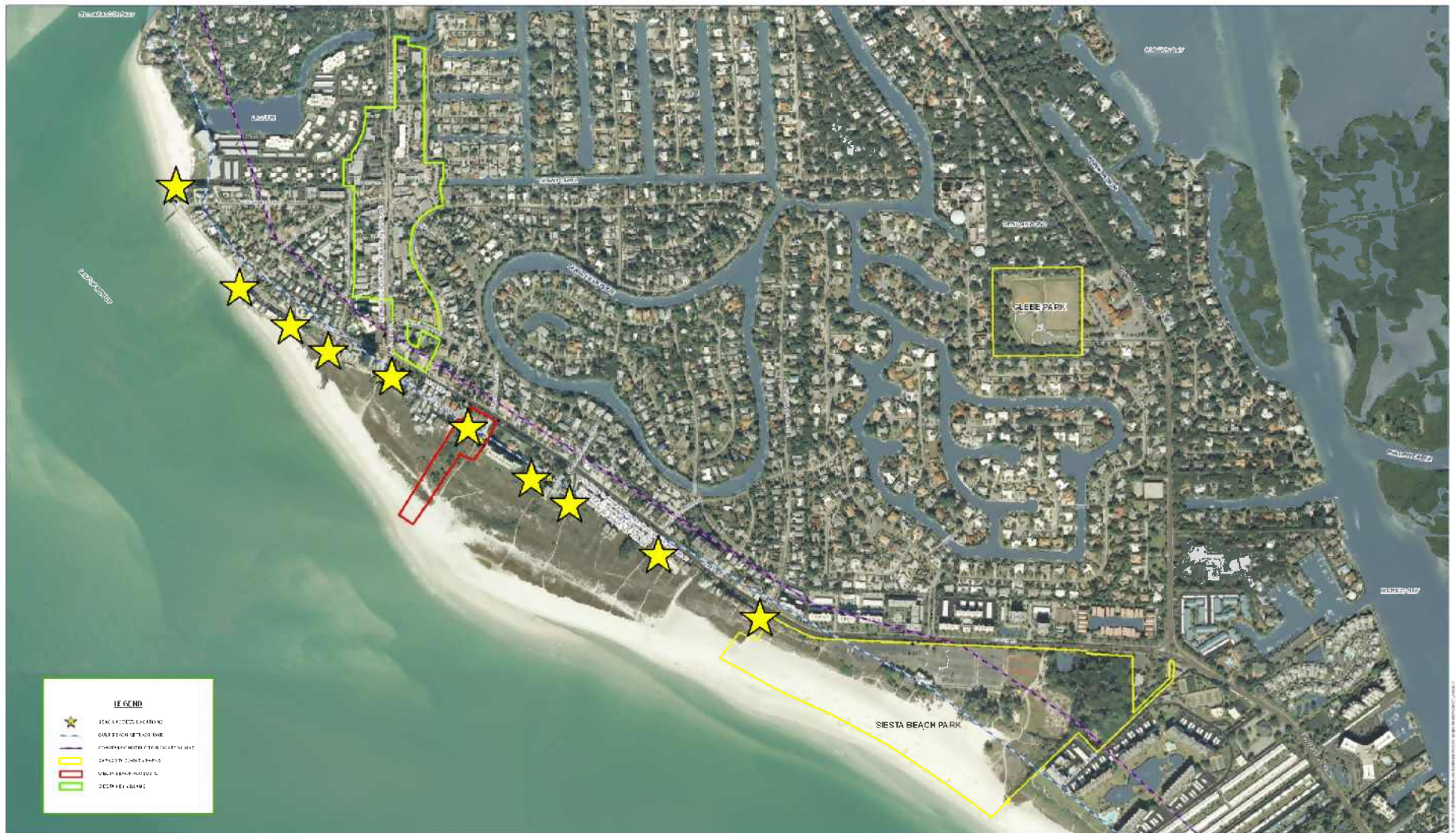
- Presentation
 - Background Information
 - Existing Conditions
 - Opportunities/Constraints
 - Draft Schematic Plan
- Discussion / Comments



Park Planning Process

- Standard Park Planning Process initiated for:
 - New parks / Rehabilitation of existing parks
- Concept Planning
 - Kick-off meeting, meet with stakeholders
 - Establish Guiding Principles
 - Develop draft schematic plan
 - Public meeting / open house
- Parks Advisory and Recreation Council (PARC)
- Sarasota County Commission

Location Map



SIESTA BEACH AREA

THIS MAP IS A PRELIMINARY DRAFT AND SHOULD NOT BE USED FOR ANY DECISIONS. IT IS SUBJECT TO CHANGE WITHOUT NOTICE. THE INFORMATION ON THIS MAP IS FOR INFORMATIONAL PURPOSES ONLY. THE INFORMATION ON THIS MAP IS NOT TO BE USED FOR ANY DECISIONS. THE INFORMATION ON THIS MAP IS NOT TO BE USED FOR ANY DECISIONS.

DATE: 1/15/2014
 BY: SCGIS
 PROJECT: SIESTA BEACH AREA

**Draft: For Discussion
 Purposes Only**



0 100 200 300 400 500 Feet



Background Information

- Beach Access #7 is one of 13 public beach accesses on Siesta Key.
- It is centrally located between Siesta Beach and Siesta Key Village.
- In late 2007 and early 2009, the County purchased two adjacent properties through the Neighborhood Parkland Acquisition Program, expanding Beach Access #7 an additional 3.7 acres.



Existing Conditions

- Beach Access #7 has approximately 12-15 parking spaces, trash / recycling containers, and informational signage.
- The recently acquired properties include:
 - Historic beach cottage
 - Other residential additions
 - Concrete patios
 - Dune walkover / boardwalk
 - Vegetated dune and open beach



Existing Conditions



Beach Wildlife

- **Sea Turtles**
 - Nest on all of Sarasota County beaches
 - Including Loggerhead, Green, Kemp's Ridley and Leatherback sea turtles
 - threatened and endangered species
 - Nesting season from May 1 – Oct. 31



Loggerhead Sea Turtle



Green Sea Turtle

Beach Wildlife

- Coastal Migratory Birds
 - Utilize all of Sarasota County beaches
 - Including Piping Plover (imperiled species), Red Knots, Least Terns, and Black Skimmers
 - Migrate south to winter along the coast
 - Forage in the beach and wrack and nearshore habitat



Piping Plover



Red Knot

Beach Wildlife

- Beach Nesting Birds
 - Nesting season from February through August
 - Including Snowy Plover (imperiled species)
 - Nesting on Longboat Key, Lido Key and Siesta Key (primarily between beach accesses #5 and #10)
 - Nest on open beach to sparsely vegetated dunes, blend in with surroundings.



Snowy Plover



Least Tern



Black Skimmer

Beach Wildlife



- Post information about Sarasota County's beach nesting and imperiled shorebirds, with focus on signage at Beach Accesses #5 - #10 and Siesta Beach.
- Install post-and-rope fencing to clearly guide beach users to the beach.
- Partner and coordinate with groups such as:
 - Audubon
 - Florida Fish & Wildlife Conservation Commission
 - Friends of Sarasota County Parks (FOSCP), Beach Ambassadors and other Volunteers
- Develop a Shorebird Management Plan



Opportunities / Constraints

- Preserve coastal viewshed from Beach Road.
- Enhance public beach access and provide additional beach parking.
- Beach dune enhancement (e.g., removal of nuisance and invasive plants)
- Educational opportunities related to beach coastal habitats and processes, beach nesting and coastal migratory birds and sea turtles.
- Gulf Beach Setback Line (GBSL) / Coastal Construction Control Line (CCCL)

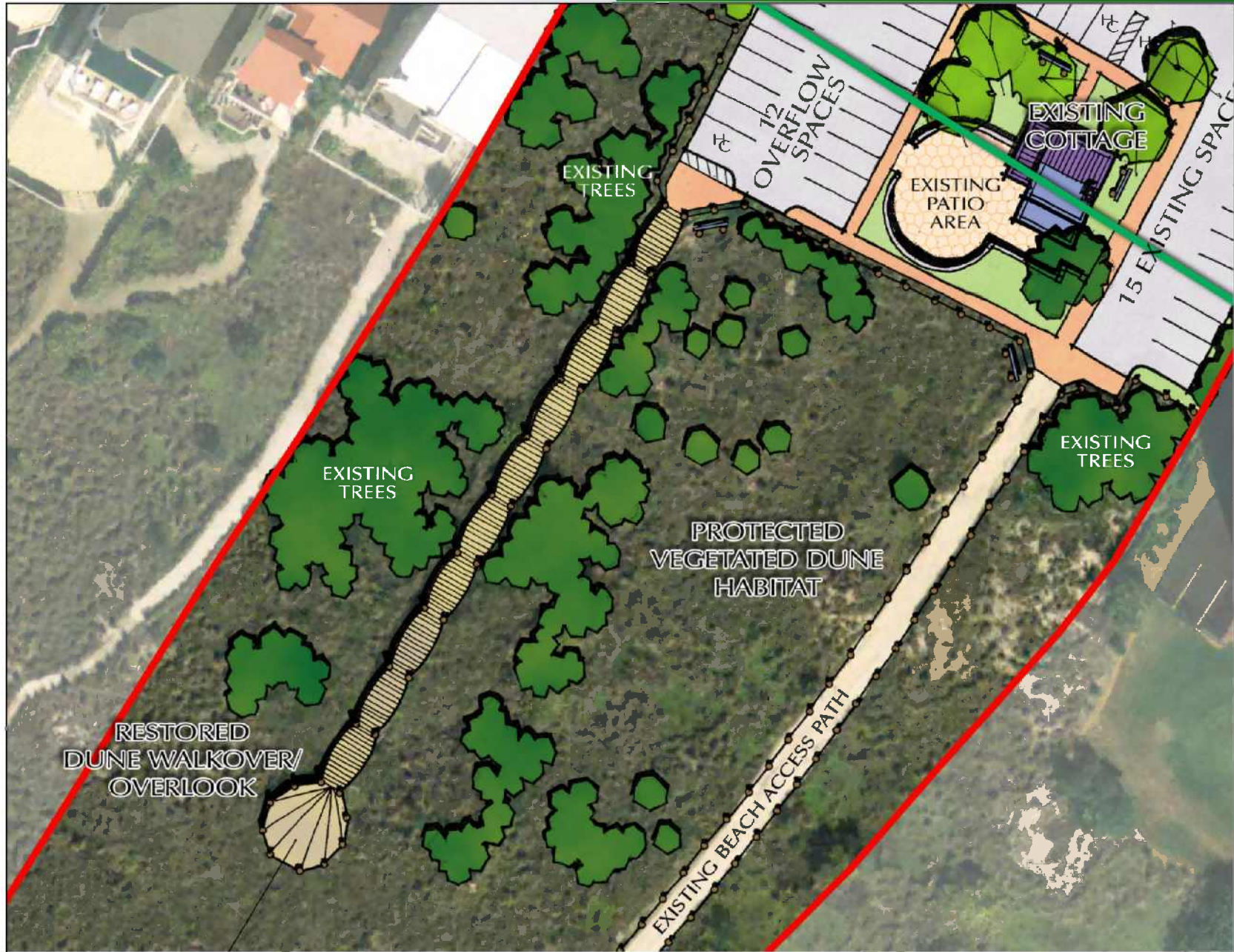
Discuss Draft Schematic Plan



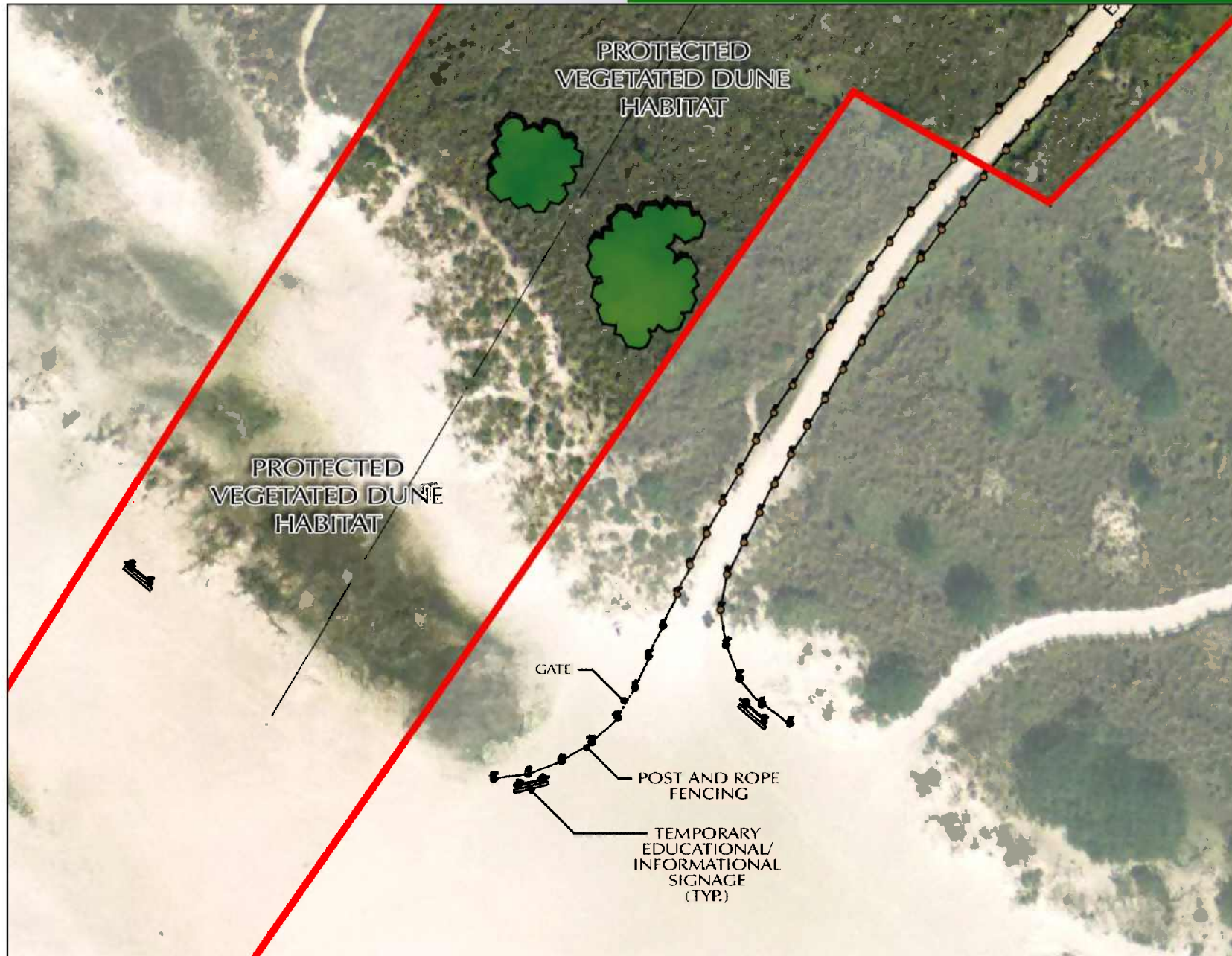
Discuss Draft Schematic Plan



Discuss Draft Schematic Plan



Discuss Draft Schematic Plan



Discuss Draft Schematic Plan

- Enhanced native landscaping
- Restored dune walkover / boardwalk would provide opportunities for wildlife viewing and ADA access
- Educational signage
- Beach cottage could be used as volunteer staging area, educational / informational center, teaching plaza
- Post-and-rope fencing to guide pedestrians to beach

Stay Informed, Stay Involved!

Beach Access 7 Webpage:

- <http://www.scgov.net/ParksandRecreation/Beaches/Access7.asp>
- Background information,
- Maps,
- Photos,
- Presentations,
- Draft schematic,
- Meeting notices,
- Email questions and comments to: parksquestions@scgov.net
- Sign up to volunteer!

Local Beaches Page 1 of 1

scgov.net

Sarasota County Government Online

Beaches

Call Center 941-861-5000 >>>

County A-Z >>>

Calendar of Events >>>

Meetings and Agendas >>>

Careers >>>

Community Services Home

Parks and Recreation Home

Athletics

Beaches

Beach Ambassador

Lifeguard Operations

Boat Launches

Paddles Sarasota Guide

Parks

Recreation and Community Centers

Therapeutic Recreation

Resources

- ↳ CDH Hot Tip Report
- ↳ Friends of Sarasota County Parks
- ↳ Legacy Trail
- ↳ Parks and Recreation Reservations
- ↳ Parkland Acquisitions

Sarasota County Links

- ↳ Access Sarasota TV Live
- ↳ All Hazards Preparation
- ↳ GIS Mapping
- ↳ Parks and Recreation
- ↳ SCAT Blue System

Siesta Key Beach Access #7

Beach Access #7 - Calle de la Siesta Beach Road and Calle de la Siesta Siesta Key, FL 34242

Read about the Public Meeting on Siesta Beach Access #7 on Oct. 29 at 6 pm.

Fact sheet on Siesta Beach Access #7

Questions/Comments? E-mail parksquestions@scgov.net, and they will be reviewed at the public meeting on October 29.

Background: Beach Access #7, located access from Beach Road and Calle de la Siesta, is one of 13 public beach access points on Siesta Key. These beach access points provide public access to the world-class beaches of Siesta Key. Beach Access #7 is centrally located approximately 3/4 mile north of Silver Beach and 1/2 mile from the Siesta Key Village. In late 2007 and early 2008, the Sarasota County purchased two adjacent parcels through the Neighborhood Parkland Acquisition Program, including Beach Access #7 in addition to 2.7 acres.

Click to enlarge

Draft map of access #7

Draft map of access #7

10272009

<http://www.scgov.net/ParksandRecreation/Beaches/Access7.asp>



Next Steps

- Update Parks Advisory and Recreation Council (PARC)
 - November 5, 2009
- Update Sarasota County Commission
 - (To be scheduled - Winter 2010)

