

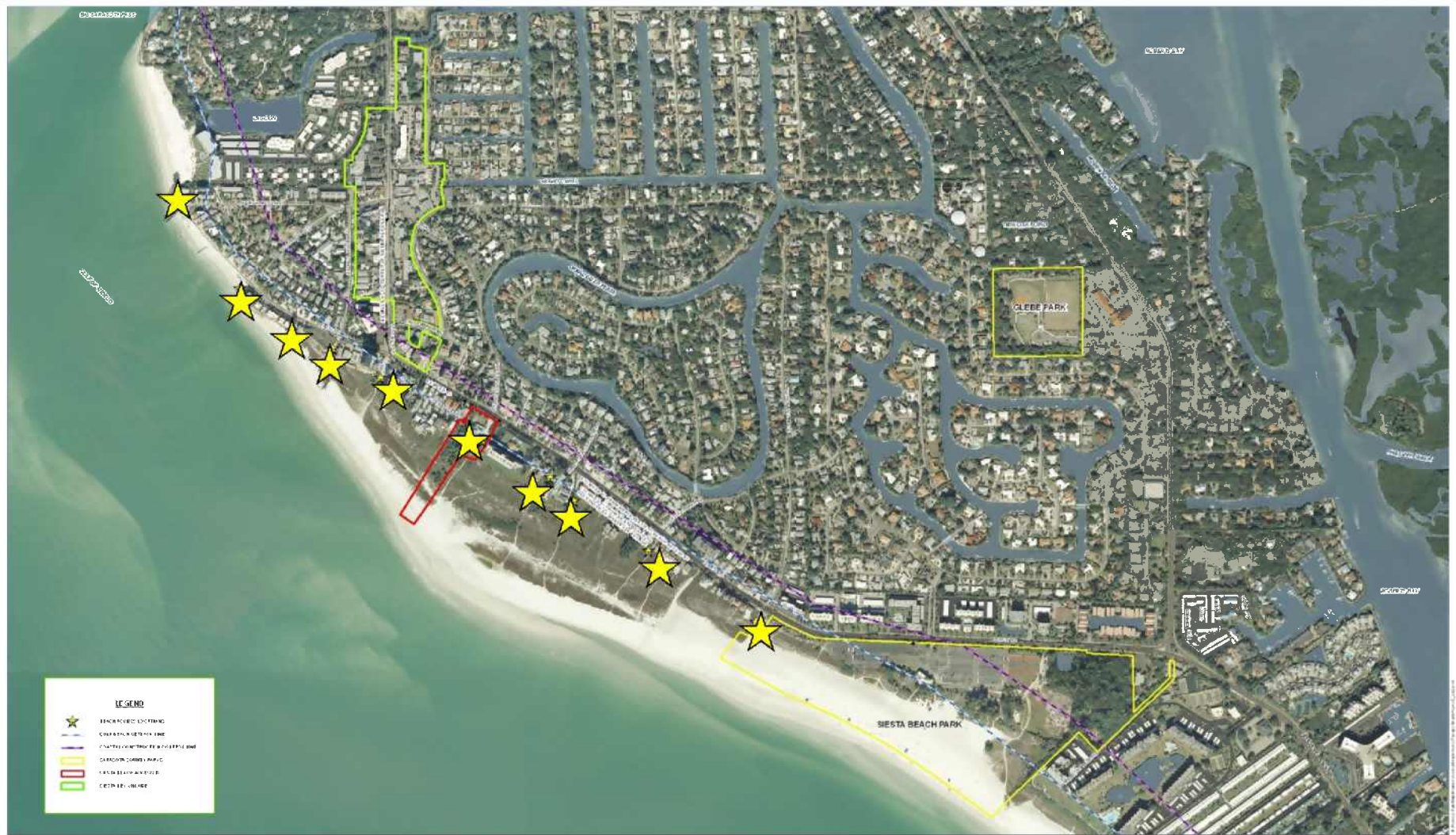
Siesta Beach Access #7 Area



Sarasota County Commission

September 29, 2010

Location Map



LEGEND

- BEACH REDEVELOPMENT
- CHARTERED DISTRICT LINE
- CHARTERED DISTRICT LINE
- CHARTERED DISTRICT LINE
- CHARTERED DISTRICT LINE

SIESTA BEACH AREA

THIS IS A PRELIMINARY MAP AND SHOULD NOT BE USED FOR ANY PURPOSES WITHOUT THE APPROVAL OF THE CITY OF MIAMI BEACH.

THIS MAP IS A PRELIMINARY MAP AND SHOULD NOT BE USED FOR ANY PURPOSES WITHOUT THE APPROVAL OF THE CITY OF MIAMI BEACH.

**Draft: For Discussion
Purposes Only**



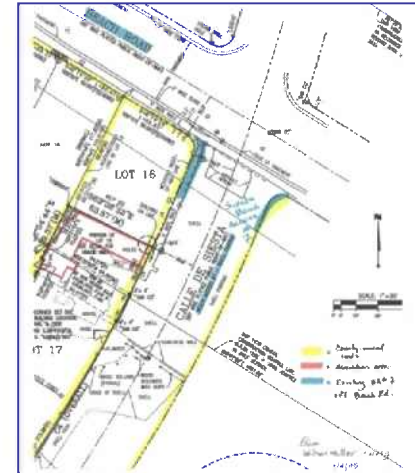
Existing Conditions

- Beach Access #7 currently has 11 designated parking spaces, trash / recycling containers, and informational signage.
- The acquired properties include:
 - Historic beach cottage with later additions
 - Concrete and brick patios and walkways
 - Dune walkover / boardwalk
 - Vegetated dune and open beach



Park Planning

- Coordination with stakeholders
- Reviewed opportunities / constraints
- Development of a draft concept plan
- Public meeting – October 2009
- Parks Advisory and Recreation Council (PARC) - March 2010
- Joint Meeting PARC and Environmentally Sensitive Lands Oversight Committee (ESLOC) – April 2010
- Update to County Commission – March 2010
- PARC - September 2010



Park Planning Continued

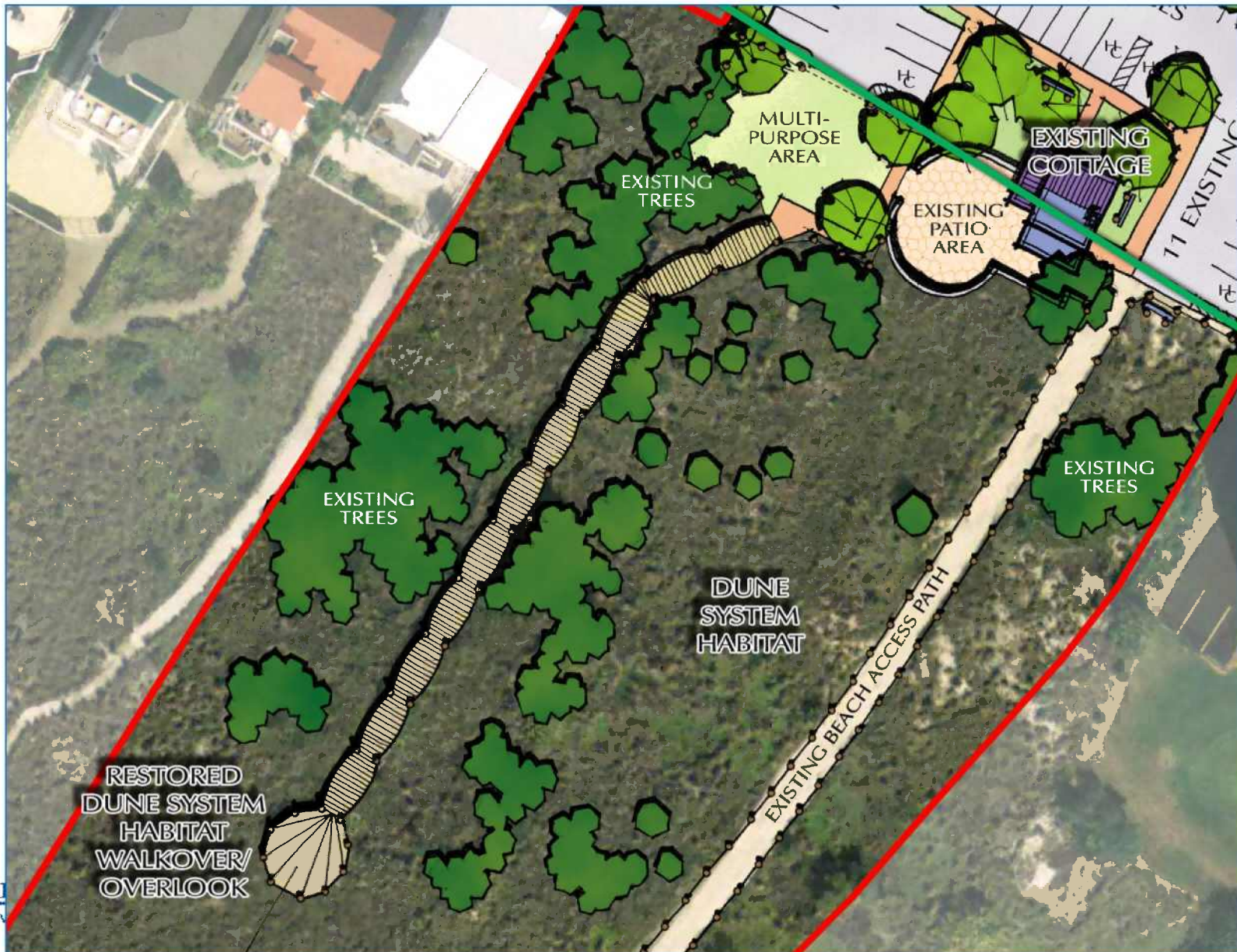
- Nesting Season – Partnership Development
- Pedestrian Access Closure
 - Volunteer assistance
 - May 14 – September 3
- Partnered with stakeholders to develop Draft Snowy Plover Adaptive Management Strategies for Beach Access Areas



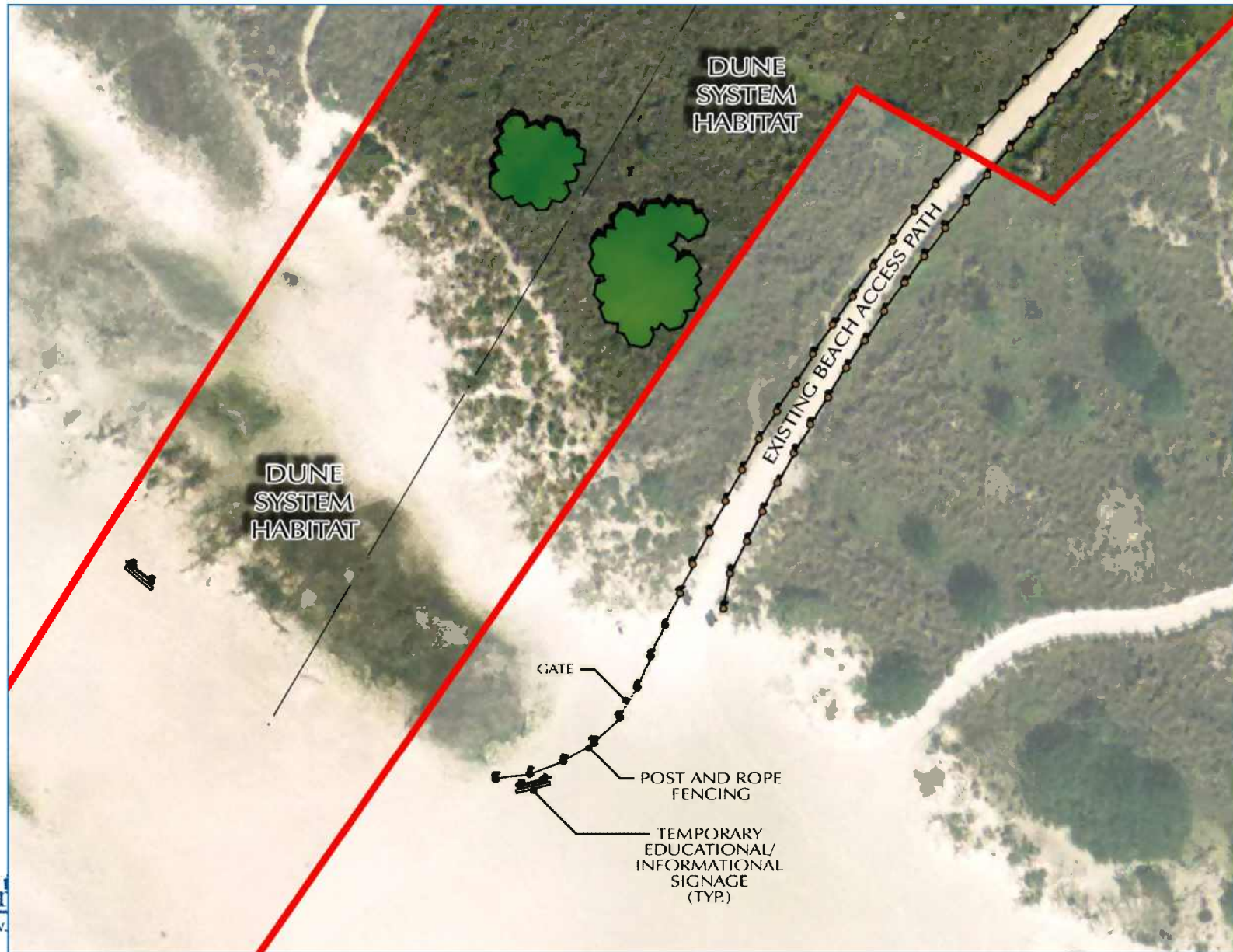
Park Plan – Cottage & Parking



Park Plan – Dune Overlook



Park Plan – Dune & Beach



Public Input

- Low impact development for parking area
- Need to further evaluate nesting shorebirds
- Closure of beach access locations (fence with gate) during nesting season
- Review alternatives for parking on Siesta Key
- Support for retaining existing historic beach cottage
- Relocate existing beach access pathway further north
- Provide small restroom



Project Update

Public Outreach

- Beach Access # 7 webpage
- Educational signage
- Audubon volunteers “chick checkers”
- Meetings with Sheriff’s Office
- On-site meetings with neighbors



Project Update

Site Improvements

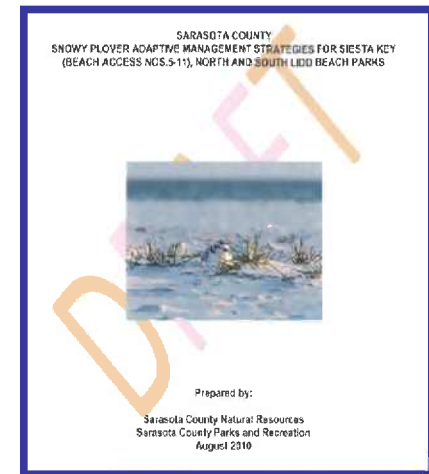
- Site work including:
 - Trash/debris removal
 - Post & rope fencing
 - Removal of invasive vegetation
- Educational Signage
- Security Patrols
- Temporary repair/closure of boardwalk
- Clean up events
- Demolition of residential addition surrounding historic beach cottage



Project Update

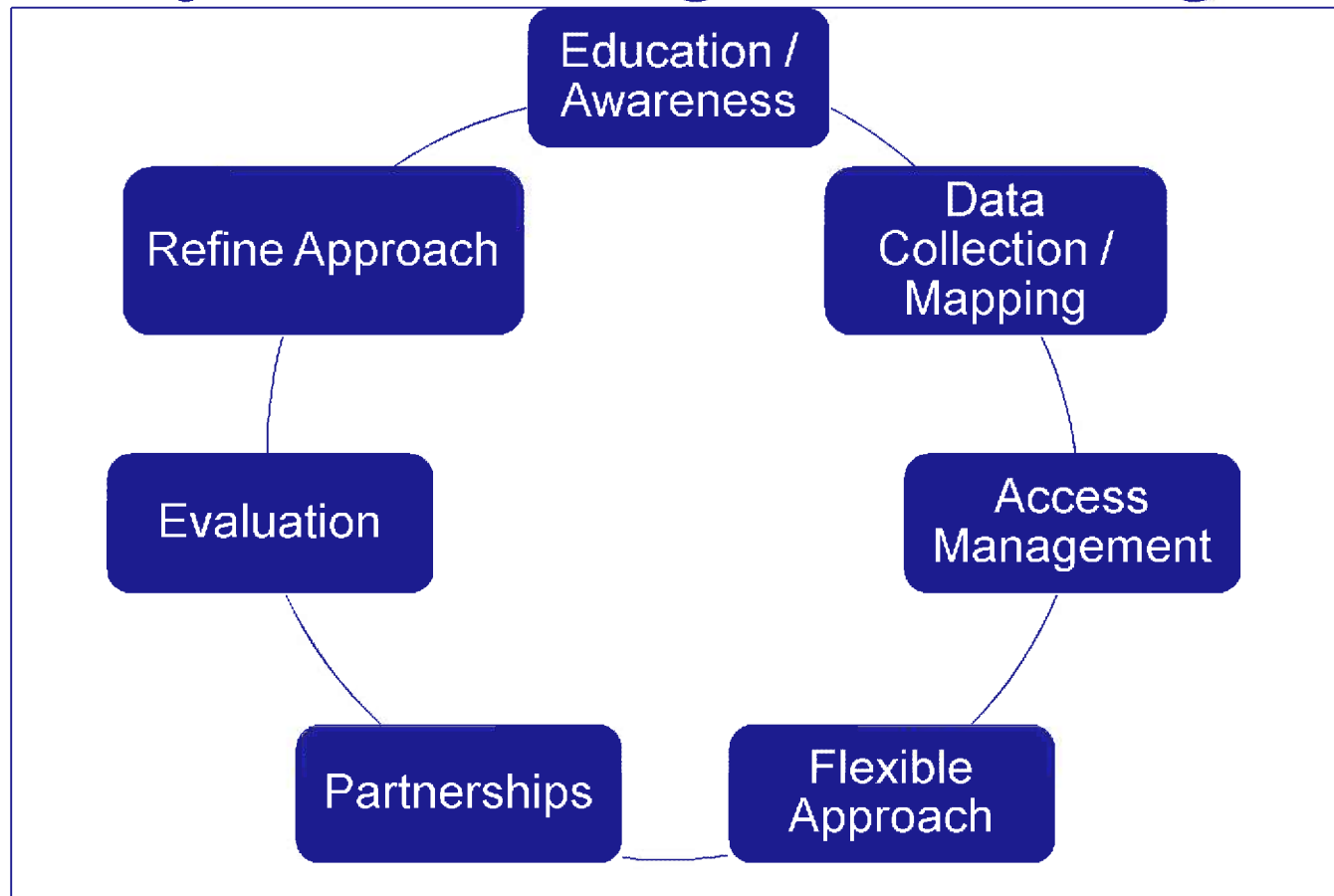
Public Beach Access Areas Snowy Plover Management Strategies

- Data Collection and Mapping
- Best Practice Research
- Dynamic nature of barrier islands and use by shorebirds (accretion)
- Adaptive strategies:
 - Stakeholder partnerships (FWC, Audubon, Ft. Desoto, Sanibel)
 - BMPs such as: buffers, access management, education/outreach, managing predators, monitoring, other
- Public Input



Project Update

Public Beach Access Areas Snowy Plover Management Strategies



Next Steps

- Request County Commission approve the Beach Access # 7 Concept Plan (Resolution 2010-____).
- Provide phased improvements: parking areas, signage, landscaping and buffers.

Questions / Comments?



Beach Wildlife Photos courtesy of: Michelle van Deventer, Rick Greenspun, Sarasota Audubon, Integration & Application Network, Southeast American Littoral Society, Coastal Wildlife Club

Thank you!