

Siesta Beach Access #7 Area



Sarasota County Commission - March 17, 2010

Agenda

- Presentation
 - Background Information
 - Existing Conditions
 - Beach Wildlife
 - Opportunities/Constraints
 - Draft Schematic Plan
 - Project Status

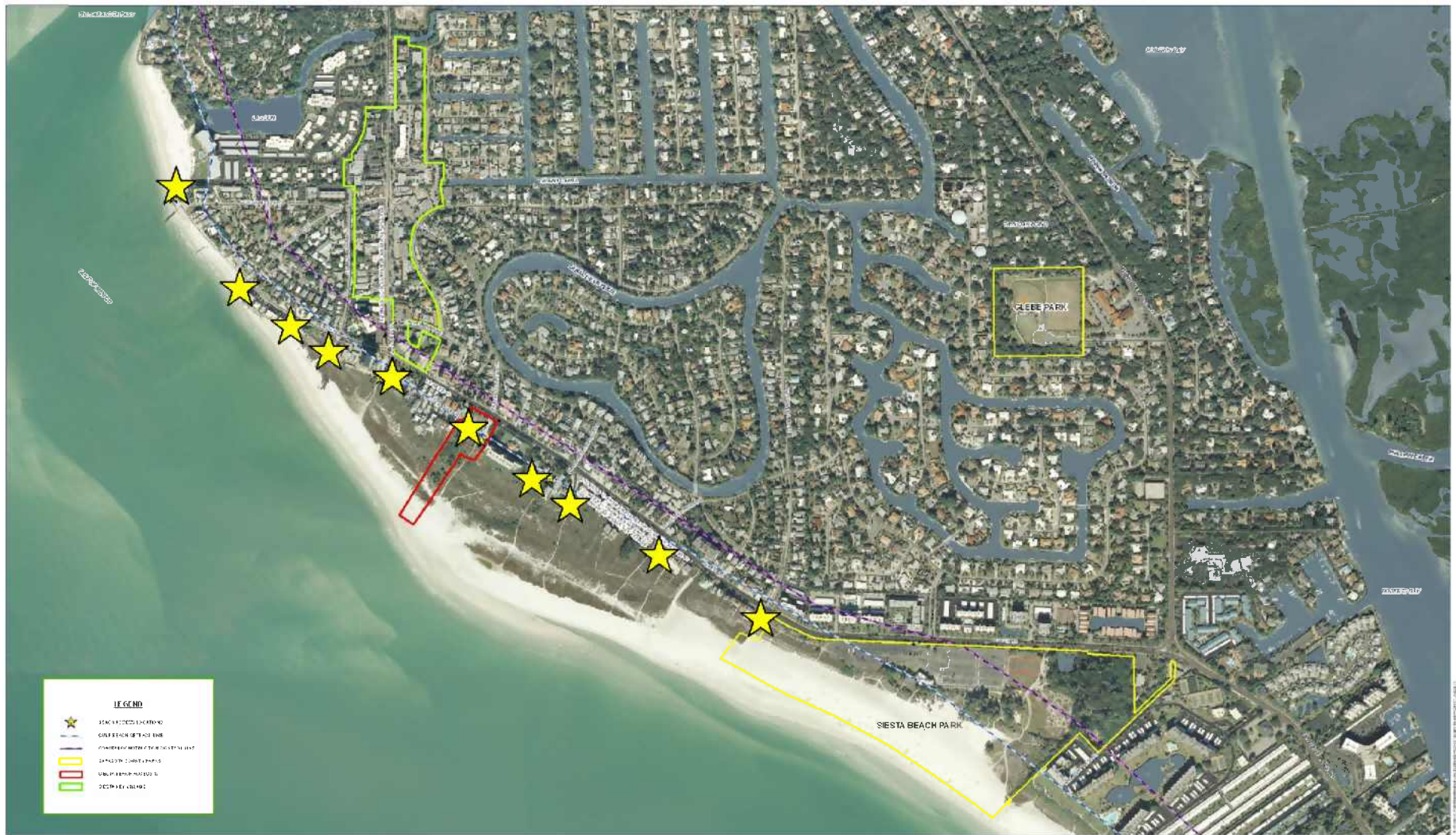


Background Information

- Beach Access #7 is one of 13 public beach accesses on Siesta Key.
- It is centrally located between Siesta Beach and Siesta Key Village.
- In late 2007 and early 2009, the County purchased two adjacent properties through the Neighborhood Parkland Acquisition Program, expanding Beach Access #7 an additional 3.7 acres.



Location Map



SIESTA BEACH AREA

THIS MAP IS PROVIDED FOR INFORMATIONAL PURPOSES ONLY. IT IS NOT A CONTRACT AND SHOULD NOT BE USED AS SUCH. THE USER SHALL BE RESPONSIBLE FOR VERIFYING THE ACCURACY OF THE INFORMATION SHOWN ON THIS MAP.

DATE: 01/20/2014
 BY: SCGIS
 PROJECT: SIESTA BEACH AREA

**Draft: For Discussion
 Purposes Only**



0 100 200 300 400 500 Feet



Existing Conditions

- Beach Access #7 has approximately 15 designated parking spaces, trash / recycling containers, and informational signage.
- The recently acquired properties include:
 - Historic beach cottage
 - Other residential additions
 - Concrete patios
 - Dune walkover / boardwalk
 - Vegetated dune and open beach



Existing Conditions



Beach Wildlife

- Sea Turtles
 - Nest on all of Sarasota County beaches
 - Include loggerhead, green, Kemp's Ridley and leatherback sea turtles
 - threatened and endangered species
 - Nesting season from May 1 – Oct. 31



Loggerhead Sea Turtle



Green Sea Turtle

Beach Wildlife

- Coastal Migratory Birds
 - Utilize all of Sarasota County beaches
 - Include Federal and State and listed species such as Piping Plover, Red Knots, Least Terns, and Black Skimmers
 - Migrate south to winter along the coast
 - Forage in the beach, wrack and nearshore habitat



Piping Plover



Red Knot

Beach Wildlife

- Beach Nesting Birds
 - Nesting occurs February through August, on open beach or sparsely vegetated dunes
 - State listed Snowy Plover, Least Tern and Black Skimmer nest on Longboat Key, Lido Key and Siesta Key (primarily between Beach Accesses #5 to #10)



Snowy Plover



Least Tern



Black Skimmer

Opportunities / Constraints

- Preserve coastal viewshed from Beach Road.
- Enhance public beach access and provide additional beach parking.
- Beach dune enhancement (e.g., removal of nuisance and invasive plants).
- Educational opportunities related to beach coastal habitats and processes, beach nesting and coastal migratory birds and sea turtles.
- Gulf Beach Setback Line (GBSL) / Coastal Construction Control Line (CCCL)

Draft Schematic Plan

- Enhanced landscaping with native plants
- Restored dune walkover / boardwalk platform would provide ADA access and opportunities for wildlife and beach viewing (no beach access at this location).
- Educational signage
- Beach cottage could be used as volunteer staging area, educational / informational center, teaching plaza
- Post-and-rope fencing to delineate beach access right-of-way.

Project Status

Completed:

- **Public Meeting Summary (October 29, 2009)**
 - Support for beach cottage onsite
 - Further evaluate nesting shorebirds between accesses #5-10
 - Shorebird management plan to collect data prior to additional access
 - Review other parking alternatives on and off Siesta Key
 - Close the access or a portion of the access during shorebird nesting season
 - Increase volunteers and educational signage

Project Status

Completed and Ongoing:

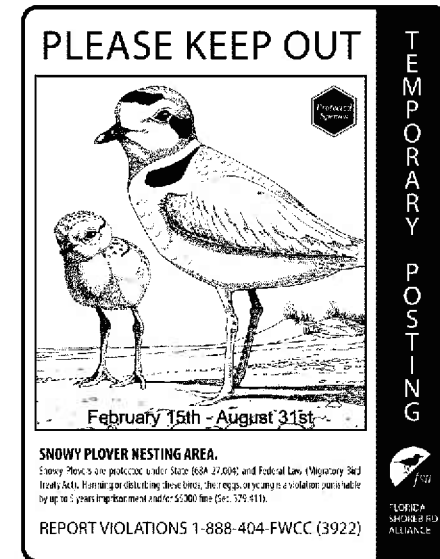
- Siesta Beach Access 7 Webpage developed.
- Meetings with state wildlife, environmental regulatory agencies and Audubon to discuss shorebird nesting area; area to be managed and potentially closed off during breeding season.
- Beach University 2010 – Shorebird Session
- Post signs regarding sensitive shorebird habitat



Project Status

In Process and Ongoing:

- Educational opportunities:
 - Signage prohibiting dogs on beach and defining sensitive shorebird habitats
 - Volunteer recruitment and training to track/monitor shorebird nesting activities for 2010 season and beyond – “Audubon Chick Checkers!”
- Coordination with Sheriff’s Office.
- Habitat Assessment / wildlife inventory.
- Update webpage / ongoing communication and meetings with neighbors and other stakeholders.



Project Status

Parks Advisory Recreation Council (PARC):

- Unanimously recommend to the County Commission that Natural Resources, Parks and Recreation and various stakeholders develop a Countywide shorebird nesting strategy, while considering beach maintenance and various other wildlife such as sea turtles.

Upcoming / Next Steps:

- Educational initiatives and related signage
 - Develop Shorebird Fact Sheet
 - Signage to be developed initially for Siesta Beach Accesses #5-10
- Site Improvements
 - Install post-and-rope fencing along Beach Road frontage and at the terminus of Tenacity Lane
 - Removal of residential additions to original beach cottage

Questions / Comments?



Beach Wildlife Photos courtesy of: Michelle van Deventer, Sarasota Audubon, Integration & Application Network, Southeast American Littoral Society, Coastal Wildlife Club