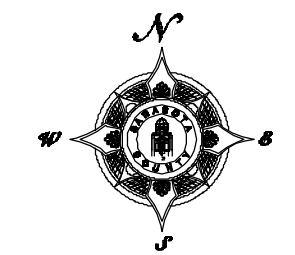


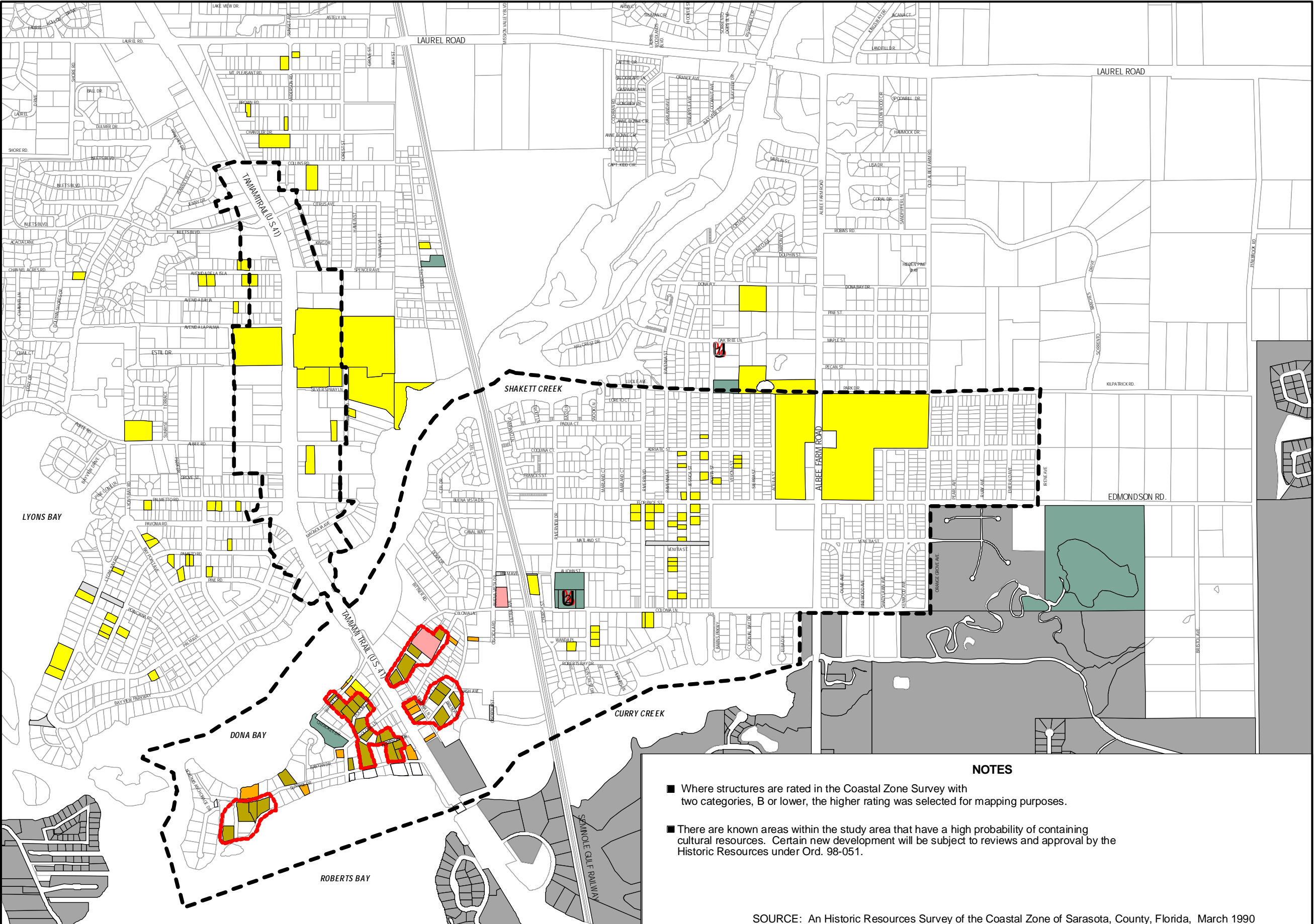
**FIGURE 4-1
NOKOMIS CENTER
REVITALIZATION PLAN
HISTORIC**



SCALE
1000 0 1000 Feet

LEGEND

- STUDY AREA
- CITY OF VENICE
- UNPAVED R.O.W.
- Site is potentially eligible for individual listing in either a local or national historic district
- Site is potentially eligible for individual listing in a local historic district
- Site is potentially eligible for contributing to a local historic district
- Eligibility not determined
- Site is included in the Florida Master Site File (FMSF), but the concentration of resources is not sufficient to qualify for a local historic district designation
- HISTORIC MARKER
1 - Venice Post Office
- HISTORIC MARKER
2 - Venice (Jesse Knight) Cemetery
- PROPOSED AREA FOR LOCAL HISTORIC DISTRICT NOMINATION



NOTES

- Where structures are rated in the Coastal Zone Survey with two categories, B or lower, the higher rating was selected for mapping purposes.
- There are known areas within the study area that have a high probability of containing cultural resources. Certain new development will be subject to reviews and approval by the Historic Resources under Ord. 98-051.

SOURCE: An Historic Resources Survey of the Coastal Zone of Sarasota, County, Florida, March 1990

PREPARED BY THE SARASOTA COUNTY GROWTH MANAGEMENT BUSINESS CENTER
GIS MAPPING AND GRAPHICS UNIT - FEBRUARY 2001
"Dedicated to Quality Service"