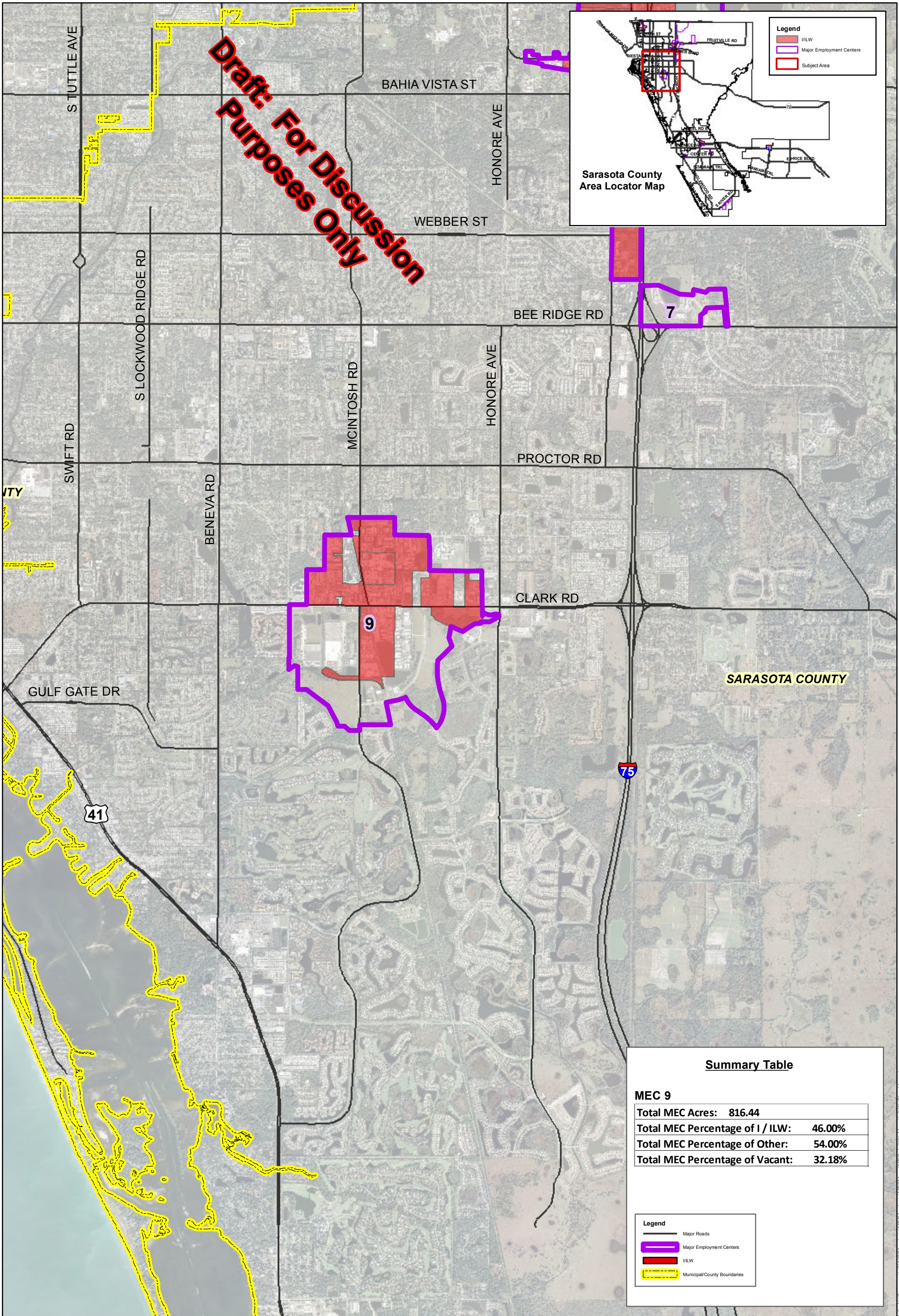
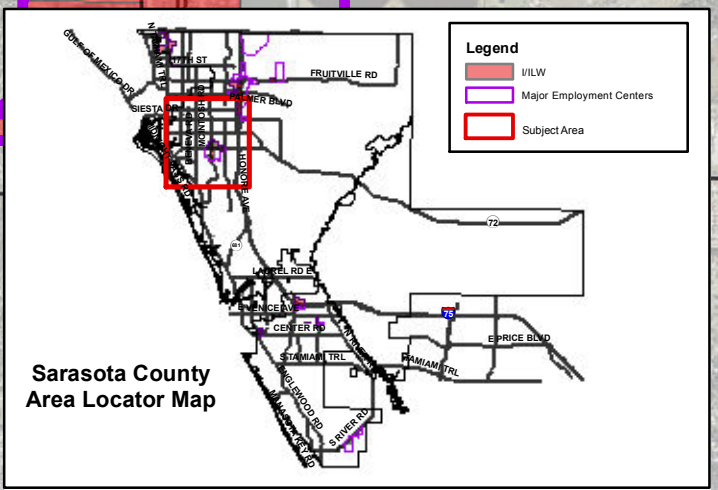
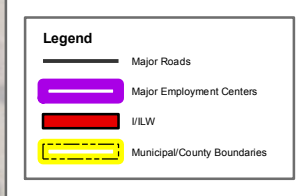


**Draft: For Discussion
Purposes Only**



Summary Table

| | |
|----------------------------------|--------|
| MEC 9 | |
| Total MEC Acres: | 816.44 |
| Total MEC Percentage of I / ILW: | 46.00% |
| Total MEC Percentage of Other: | 54.00% |
| Total MEC Percentage of Vacant: | 32.18% |



I / ILW Zoned Properties - Sheet 3