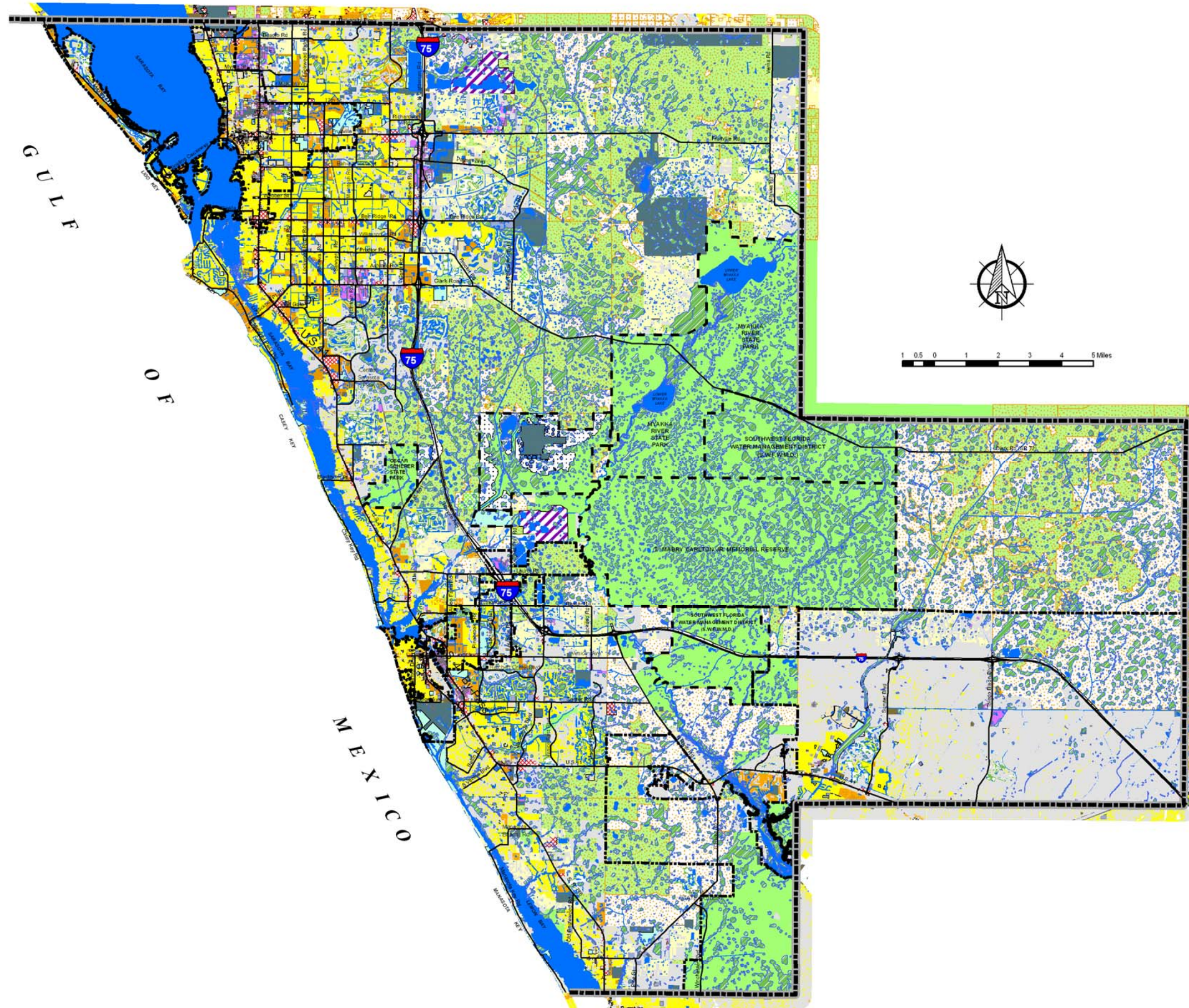


# EXISTING LAND USE MAP

SARASOTA COUNTY  
JANUARY 2003



## Legend

### Designated Land Uses

- LOW DENSITY RESIDENTIAL (< 2 DU/ACRE)
- MODERATE DENSITY RESIDENTIAL (≥ 2 AND < 5 DU/ACRE)
- HIGH DENSITY RESIDENTIAL (≥ 5 DU/ACRE)
- INDUSTRIAL
- INSTITUTIONAL
- COMMERCIAL AND OFFICE
- VACANT - PUBLIC
- EXTRACTIVE
- OTHER PUBLIC FACILITIES
- EDUCATIONAL BUILDING
- PUBLIC BUILDINGS
- VACANT
- CONSERVATION/PRESERVATION - PUBLIC
- CONSERVATION/PRESERVATION - PRIVATE
- RECREATIONAL (PRIVATE)
- RECREATIONAL (PUBLIC)
- WETLANDS
- BEACHES AND SHORES
- AGRICULTURE-NATIVE RANGE
- AGRICULTURE-INTENSIVE
- ESTUARINE WATERS
- RIVERS, BAYS AND LAKES

N:\Projects\Growth\_Management\Existing\_Land\Use2003\2003\_EXISTING\_LDUSE11x17.mxd



PREPARED BY THE SARASOTA COUNTY  
PLANNING & DEVELOPMENT SERVICE BUSINESS CENTER  
PLANNING SERVICES - GIS

"Dedicated to Quality Service"