

FWC Perspectives on Florida Scrub Jay Conservation in Southwest Florida

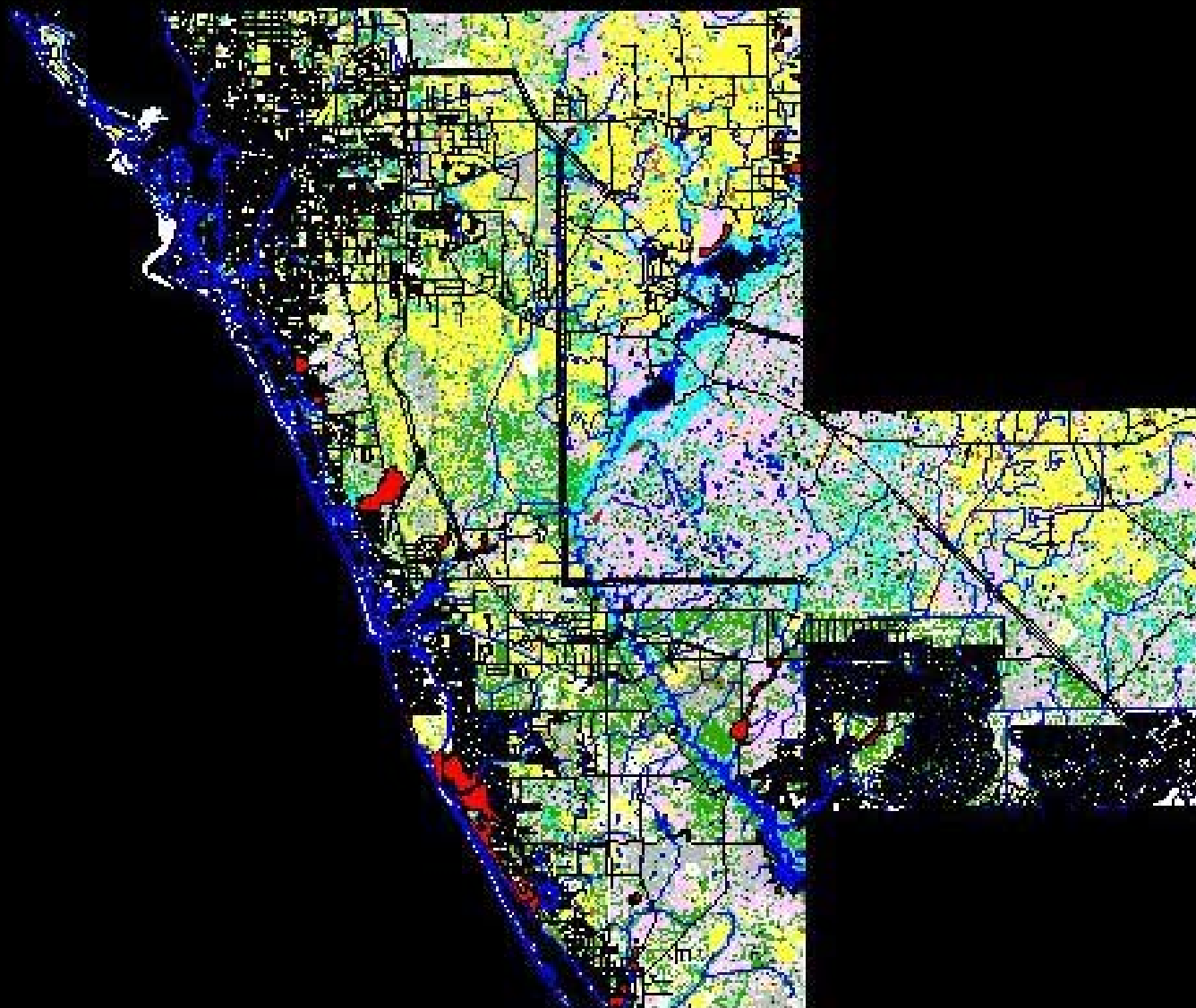
February 27, 2003

James W. Beever, III





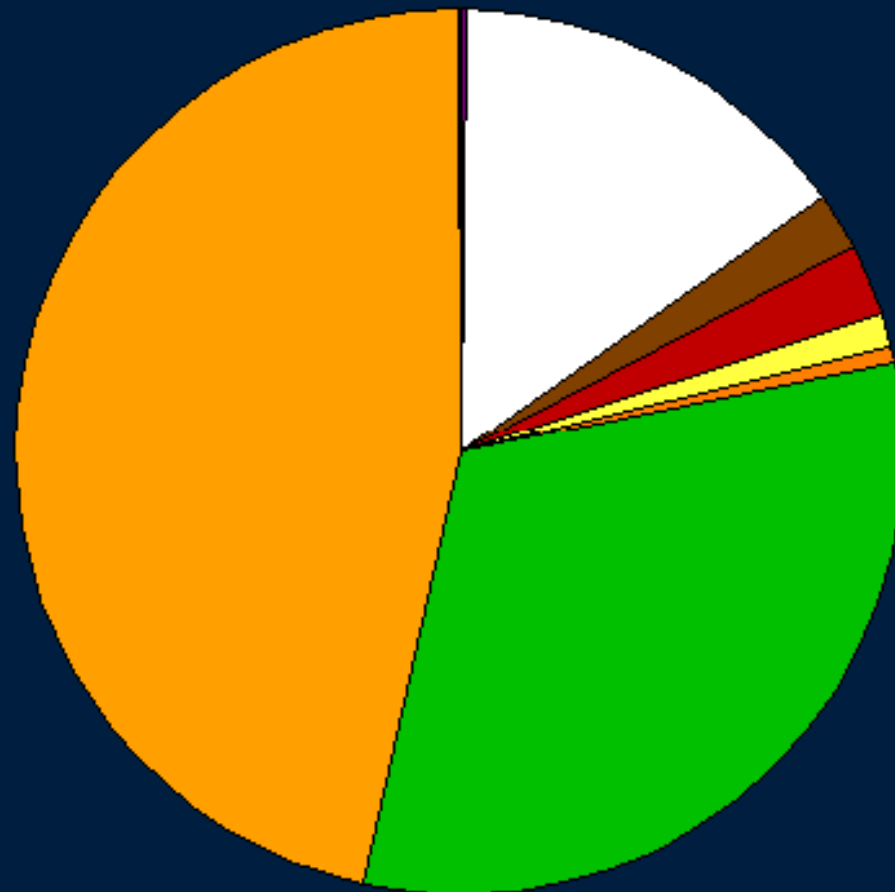
Historic Landcover Based on Soils and Vegetation



Sarasota Landcover- 1989-1990

Distribution of Native Upland Habitats

Charlotte Harbor National Estuary Program Area



coastal strand dry prairie pinelands sand pine sandhill
xeric oak mixed hardwood hardwood hammock tropical hammock

ECOLOGY AND DEVELOPMENT-RELATED HABITAT
REQUIREMENTS OF THE FLORIDA SCRUB JAY
(*APHELOCOMA COERULESCENS COERULESCENS*)

NONGAME WILDLIFE PROGRAM
TECHNICAL REPORT NO. 8



JOHN W. FITZPATRICK, Ph.D
GLEN E. WOOLFENDEN, Ph.D
MARK T. KOPENY, Ph.D

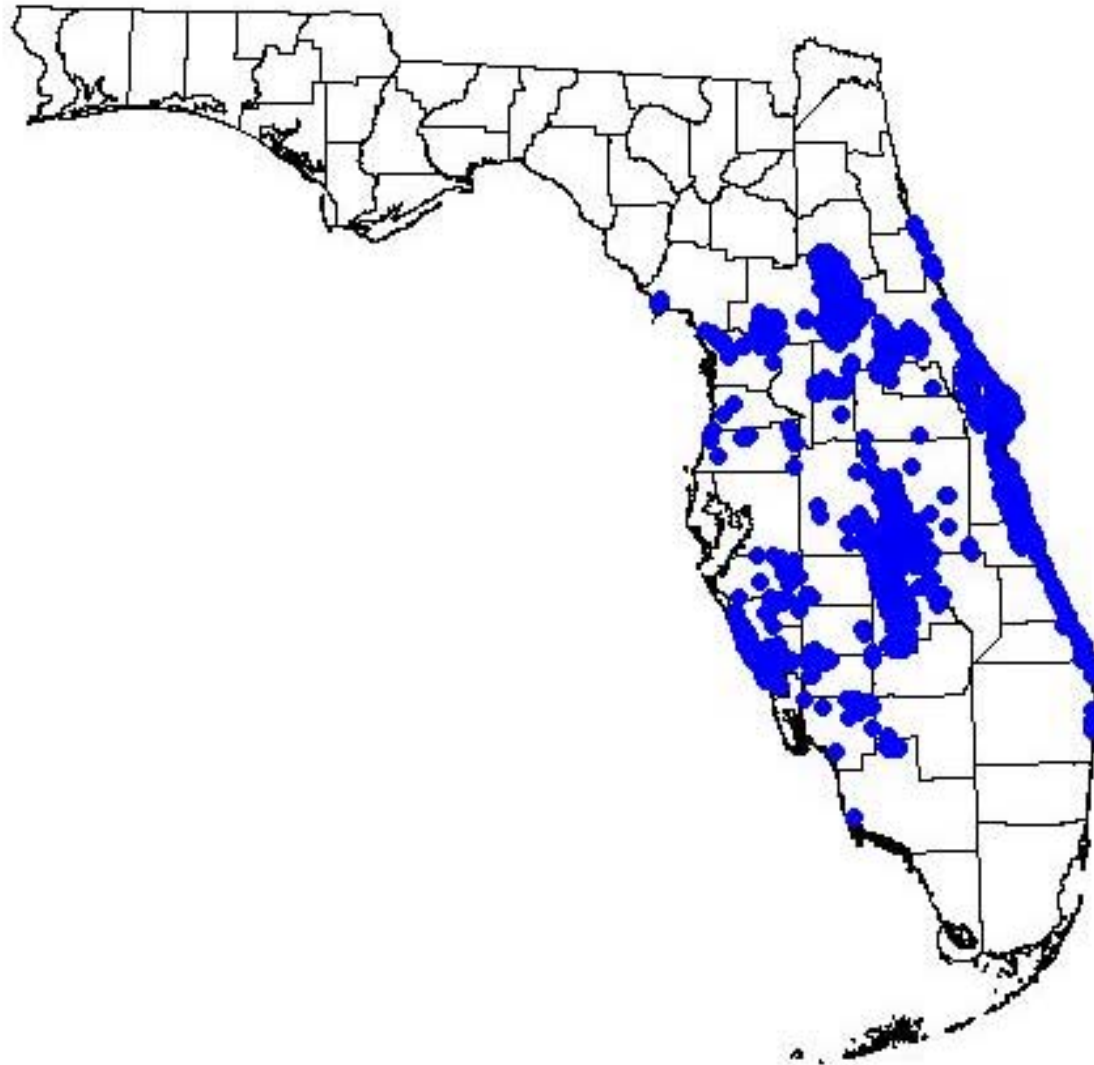
OFFICE OF ENVIRONMENTAL SERVICES
FLORIDA GAME AND FRESH WATER FISH COMMISSION
620 S. MERIDIAN STREET
TALLAHASSEE, FLORIDA
32399-1600

April 1991

**1a. PROPOSED
DEVELOPMENT IS WITHIN
THE CURRENT RANGE OF
SCRUB JAYS.**

- Inventory habitat on-site (p. 13).
- Go to couplet 2.

Statewide Florida Scrub Jay Distribution



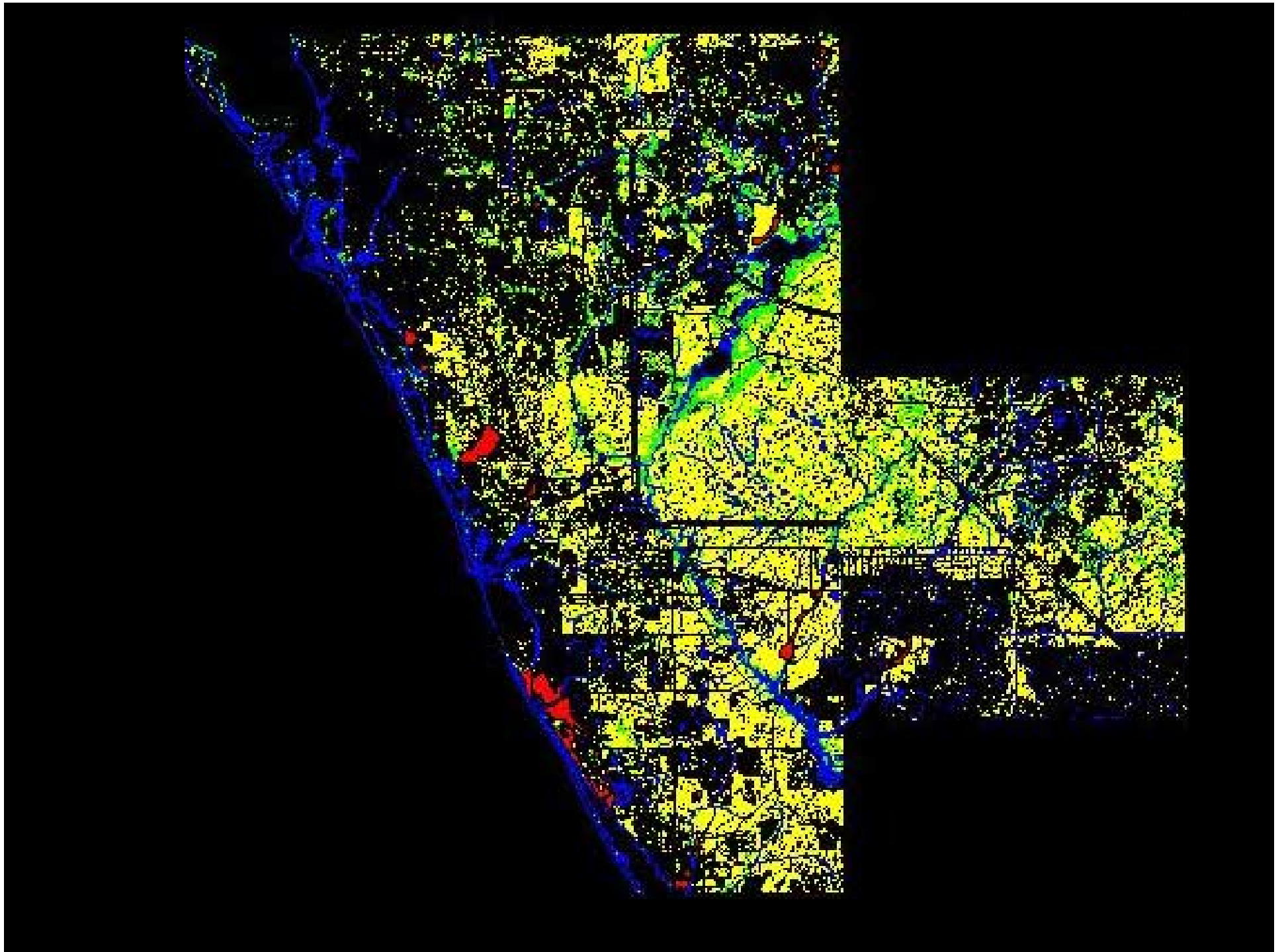
**2b. NO TYPE I, II, or III
HABITAT EXISTS ON-SITE.**

- **No habitat preservation measures for scrub jays are recommended.**



2a. TYPE I, II, OR III HABITAT EXISTS ON-SITE.

- **Survey all Type I, II, and III habitat for scrub jays (pp. 13-15).**
- **Go to couplet 3.**



Florida Scrub Jay Habitats

- **Xeric Oak Scrubs**
- **Coastal Strands**
- **Scrubby Flatwoods**
- **Palmetto with Oaks**
- **Residential Neighborhoods**
- **Aboriginal Mounds**

XERIC OAK SCRUB

- **1031-1161 acres in SWF in 1986**
- **Only 1% to 1.5% of the original extents**
- **98.5% to 99% changed by land development activities**





Coastal Strand

- **570 to 615 acres in SWF in 1986**
- **Only 4% to 6% of the original extents**
- **94% to 96% changed by land development activities**



Xeric or Scrubby Pine Flatwoods

- **49,576 to 59,491 acres from 1986 LANDSAT**
- **Only 9% to 11% of the original inventory**
- **89% to 91% changed by land development activities**



Palmetto with Xeric Oaks

- **Former xeric oak scrub or xeric pine flatwoods with canopy & mid-story removed**
- **Probably from ranching & timber practices**
- **Occasionally from speculative land clearing**
- **Acreage unknown relative to other cleared prairies.**



Residential Neighborhoods

- **Former xeric oak scrub, coastal strand, xeric pine flatwoods or palmetto w/ xeric oaks areas**
- **Converted to human residential areas with some xeric oaks left in green spaces**
- **Underlying xeric sands and soils**
- **Jays remain site true even as habitat further fragments and degrades**
- **Acreage is unknown at this time**



WARNING

**THIS AREA IS A DESIGNATED
CONSTRUCTION SITE. ANYONE
TRESPASSING ON THIS
PROPERTY UPON CONVICTION
SHALL BE GUILTY OF A FELONY.**

3a. SCRUB JAYS OCCUR ON-SITE

- **Establish one or more territory refuges in Type I, II and/or III habitat.**
- **The total number of acres of habitat to be protected in territory refuge(s) equals 25 times the number of scrub jay groups on-site (p.16).**
- **Off-site compensation may be an option in certain circumstances (p.16).**
- **Go to couplet 4.**



**4a. THE TOTAL NUMBER OF
ACRES OF TYPE I HABITAT
ON-SITE IS GREATER THAN
THE TOTAL NUMBER OF
ACRES DESIGNATED FOR
TERRITORY REFUGE(S) IN 1a,
ABOVE.**

Implementing 4a

- **Establish one or more satellite refuges in Type I habitat.**
- **The total number of acres to be protected equals: [(total number of acres of Type I habitat on-site) -(total number of acres preserved as territory refuges in 1a, above)] X 0.25 (p.16).**
- **Off-site compensation may be an alternative to on-site protection in certain circumstances (p.16).**



**4b. THE TOTAL NUMBER OF
ACRES OF TYPE I HABITAT
ON-SITE IS LESS THAN THE
TOTAL NUMBER OF ACRES
DESIGNATED FOR
TERRITORY REFUGE(S) IN 1a,
ABOVE.**

- No further habitat preservation measures for scrub jays are recommended.**



**5a. POST-1974 RECORDS EXIST
OF SCRUB JAYS WITHIN 5
MILES OF TYPE I HABITAT
ON THE PROPOSED
DEVELOPMENT SITE.**

Implementing 5a

- **Establish one or more satellite refuges in Type I habitat (p.16) or demonstrate that the jays in question have since been extirpated (p.15).**
- **The total number of acres to be preserved equals 25% of all Type I habitat on-site.**
- **Off-site compensation may be an alternative to on-site protection in certain circumstances (p.16).**



**5b. NO POST-1974 RECORDS
EXIST OF SCRUB JAYS
WITHIN 5 MILES OF TYPE I
HABITAT ON THE PROPOSED
DEVELOPMENT SITE.**

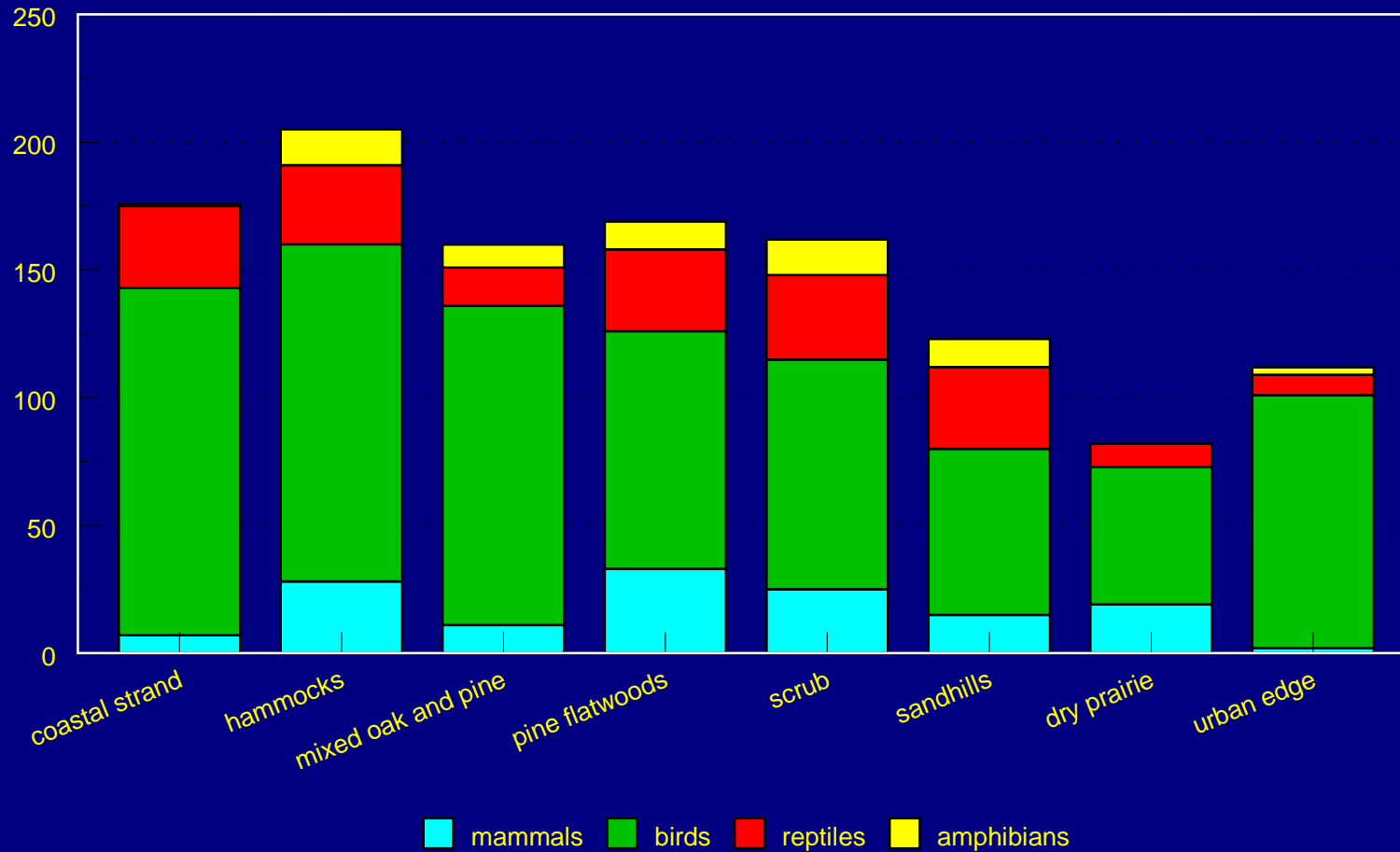
- **No further habitat preservation measures for scrub jays are recommended.**



Vertebrate Species by Upland Habitat Type

in Southwest Florida

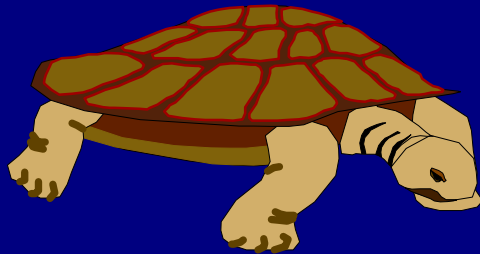
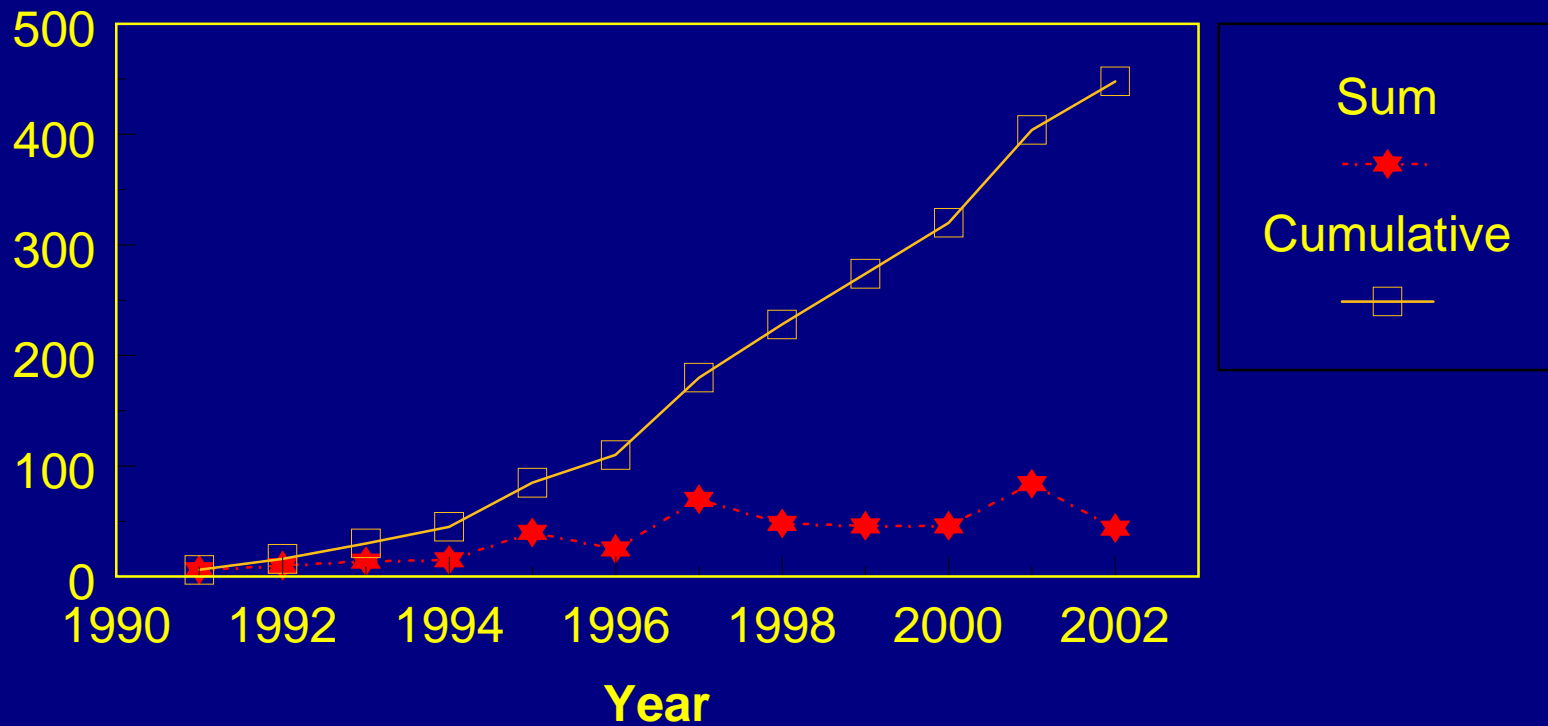
Pasco County to Collier County



Number of Gopher Tortoise Incidental Take Permits

Issued by the SW Florida Office

Number of Permits



Number of Gopher Tortoise Incidental Take Permits

Issued by the SW Florida Office

Number of Permits

