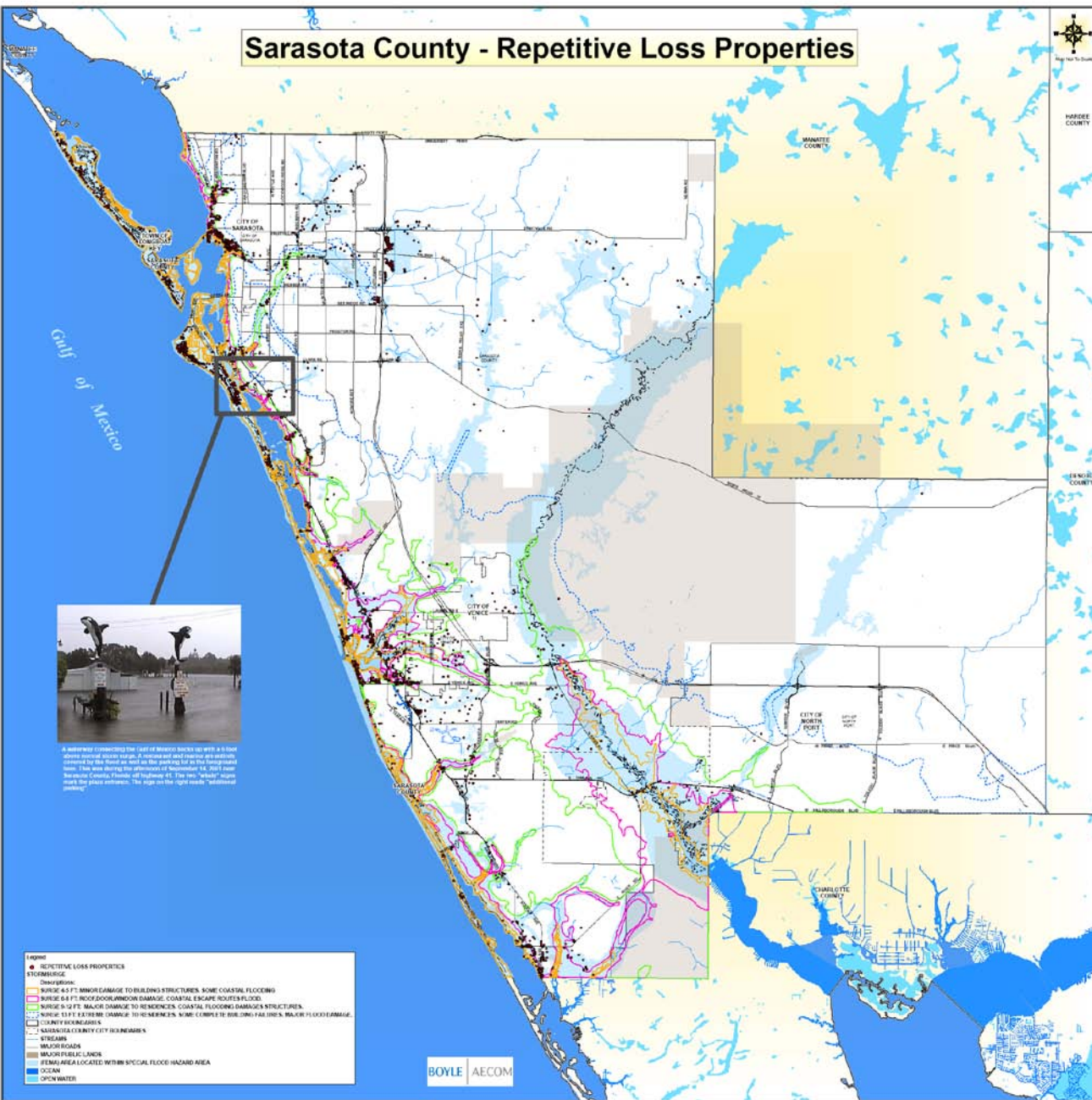


Sarasota County - Repetitive Loss Properties



A waterway connecting the Gulf of Mexico back to the bay was severely damaged by a storm surge. A waterway was destroyed and the waterway was closed for several days. The water was so high that it was possible to see the tops of palm trees. The water was so high that it was possible to see the tops of palm trees. The water was so high that it was possible to see the tops of palm trees.

- Legend**
- REPETITIVE LOSS PROPERTIES
 - STORMBURGE
 - DESTRUCTION
 - SURGE 0.5 FT. ROOF DAMAGE TO BUILDING STRUCTURES, SOME COASTAL FLOODING
 - SURGE 0.8 FT. ROOF DOOR/WINDOW DAMAGE, COASTAL ESCAPE ROUTES FLOOD
 - SURGE 1.2 FT. MAJOR DAMAGE TO RESIDENCES, COASTAL FLOODING DAMAGES STRUCTURES
 - SURGE 1.5 FT. SEVERE DAMAGE TO RESIDENCES, SOME COMPLETE BUILDING FAILURE, MAJOR FLOOD DAMAGE
 - COUNTY JURISDICTION
 - SARASOTA COUNTY CITY JURISDICTIONS
 - STREAMS
 - MAJOR ROADS
 - MAJOR PUBLIC LANDS
 - FEMA AREA LOCATED WITHIN SPECIAL FLOOD HAZARD AREA
 - COAST
 - OPEN WATER

BOYLE | AECOM