



Detention Capacity Planning Progress Report #3

October 29, 2008

*Wayne R. Applebee, Criminal Justice Policy Coordinator
(941) 861-2577*

Today's Highlights



- Board Report on Current and Future Jail Diversion Programs
- Detention Capacity Planning Update
(April 2007 to Present)
- Progress Report and Approval on Liebert and Associates Contract
 - Task VI – Site Criteria
 - Task VII – Preliminary Costs
 - Task VIII – Concept Design

Projecting the Need

Criminal Justice Commission has endorsed a planning number of 1,750 beds for the year 2030.

- ✓ Admission Rate
- ✓ Average Length of Stay
- ✓ County Population
- ✓ Peaking Factor
- ✓ Classification Factor

“Operational Capacity”

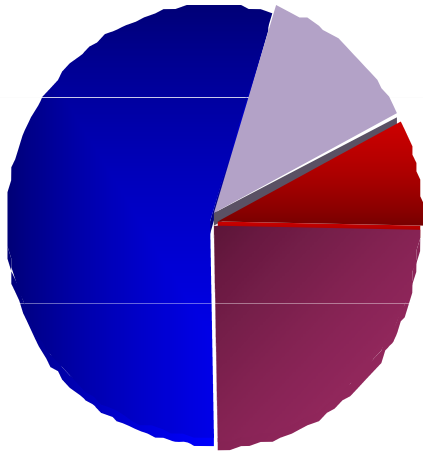
- *Operational Capacity*, as recognized by the industry, means the population should never exceed 85% of the total beds available.
 - For Sarasota County, the jail’s operational capacity is actually **872 beds**.
 - As of August 2008, the average daily population of the jail was 1,049 inmates.
 - The jail’s population peaked in August of 2007 by reaching 1,191 inmates.

Common Effects of Overcrowding

- Decreases in operational efficiencies
- Increases in assaults and introduction of contraband into the jail
- Decreases the safety of staff and inmates
- Increases potential liability, and if persistent
- Threatens accreditation, which could mean...
- Federal Court Litigation and oversight of the jail.

August 2008 Inmate Status

Current Month Status Breakdown

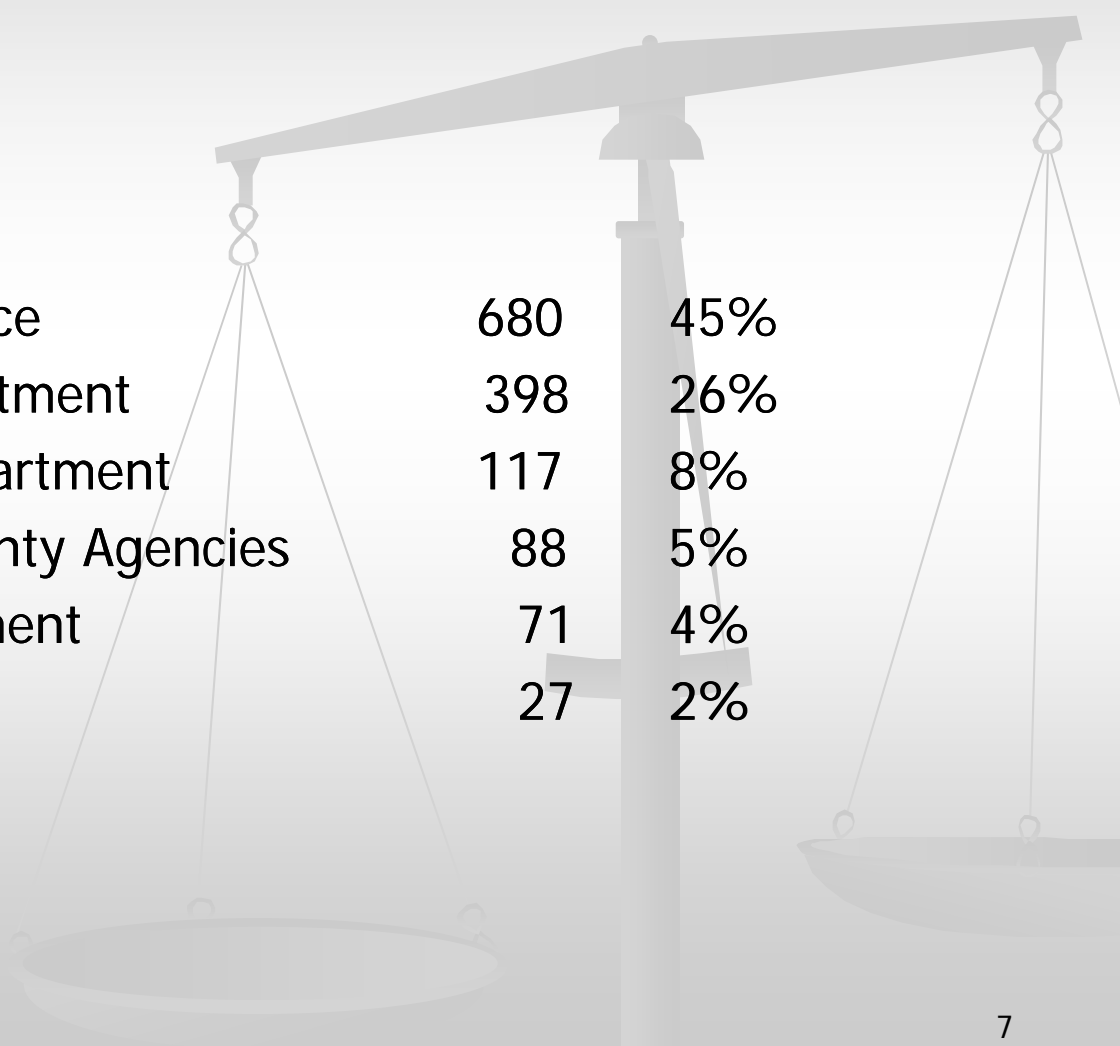


- Total Sentenced, 24%
- Total Pre-trial, 55%
- Probation Violators, 13%
- Other Jurisdictions, 8%

For 2008, 80% of all offenders in the jail have an underlying felony charge.

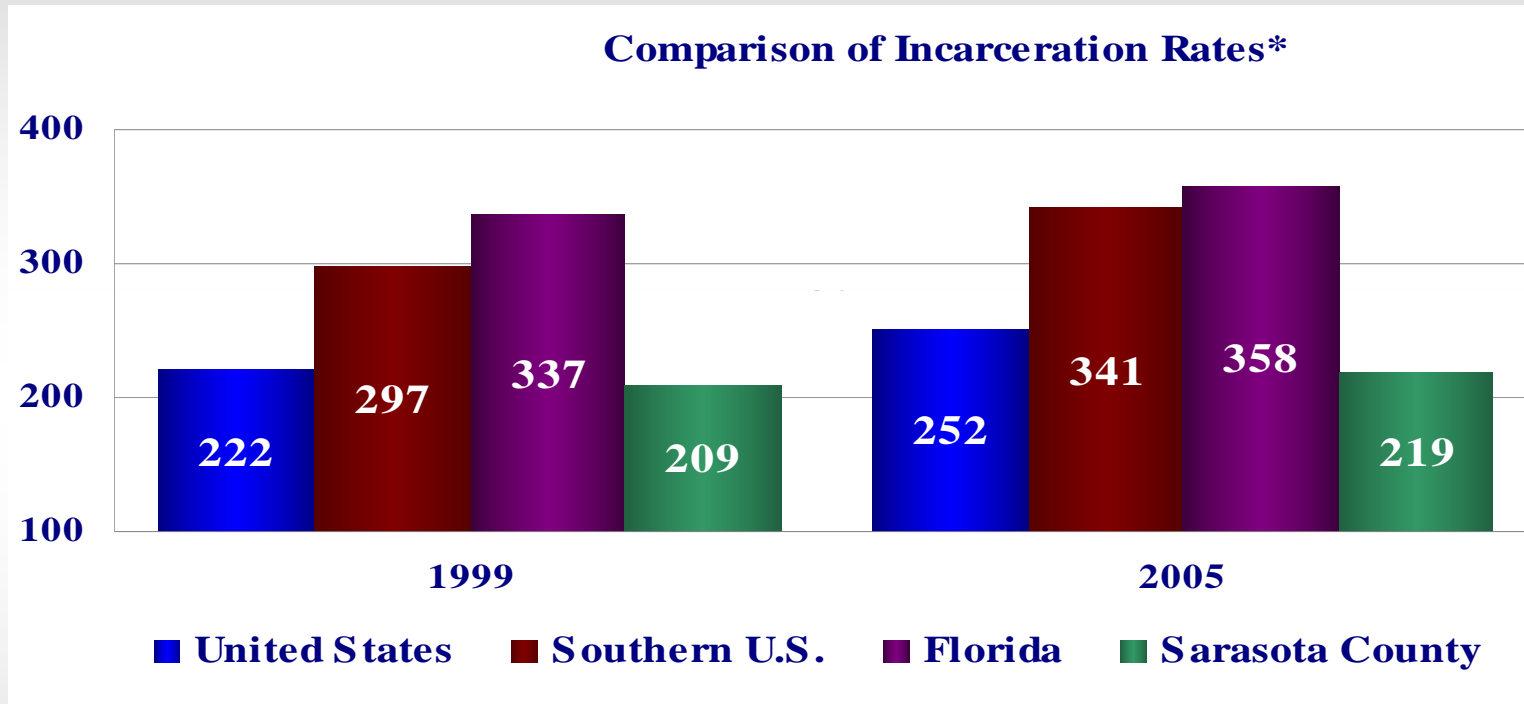
Jail Intake – August 2008

■ New Arrests:



■ Sarasota Sheriff's Office	680	45%
■ Sarasota Police Department	398	26%
■ North Port Police Department	117	8%
■ Arrests by Out-of County Agencies	88	5%
■ Venice Police Department	71	4%
■ Other Agency	27	2%

Incarceration Rates



Per 100,000 population

Current Diversion Programs

- Drug Court
- Mental Health Court
- Pre-Trial Services
- DUI Court
- CART Initiative
 - VIP-ER
 - Addictions Receiving Facility
 - Sober Housing
 - CIT



CART Initiative

Phase 1: August, 2006- Expanded detoxification capacity by creating a secure Adult Addictions Receiving Facility at First Step of Sarasota

Phase 2: August, 2005- Expanded residential treatment capacity through the VIP-ER Program at The Salvation Army

Phase 3: November, 2007- Created additional affordable sober/ supportive/transitional housing

Addictions Receiving Facility (ARF) Phase 1

- Marchman Act admissions to jail plummet.

2004 -	868
2005 -	895
2006 -	607 (ARF opens in August)
2007 -	145

- Average wait time for law enforcement officers dropping off Marchman Act detainees at the ARF has been **6 minutes**, enabling officers to get back out in the community quickly.
- As September 2008, 317 law enforcement officers have been certified in CIT (Crisis Intervention Team) training.

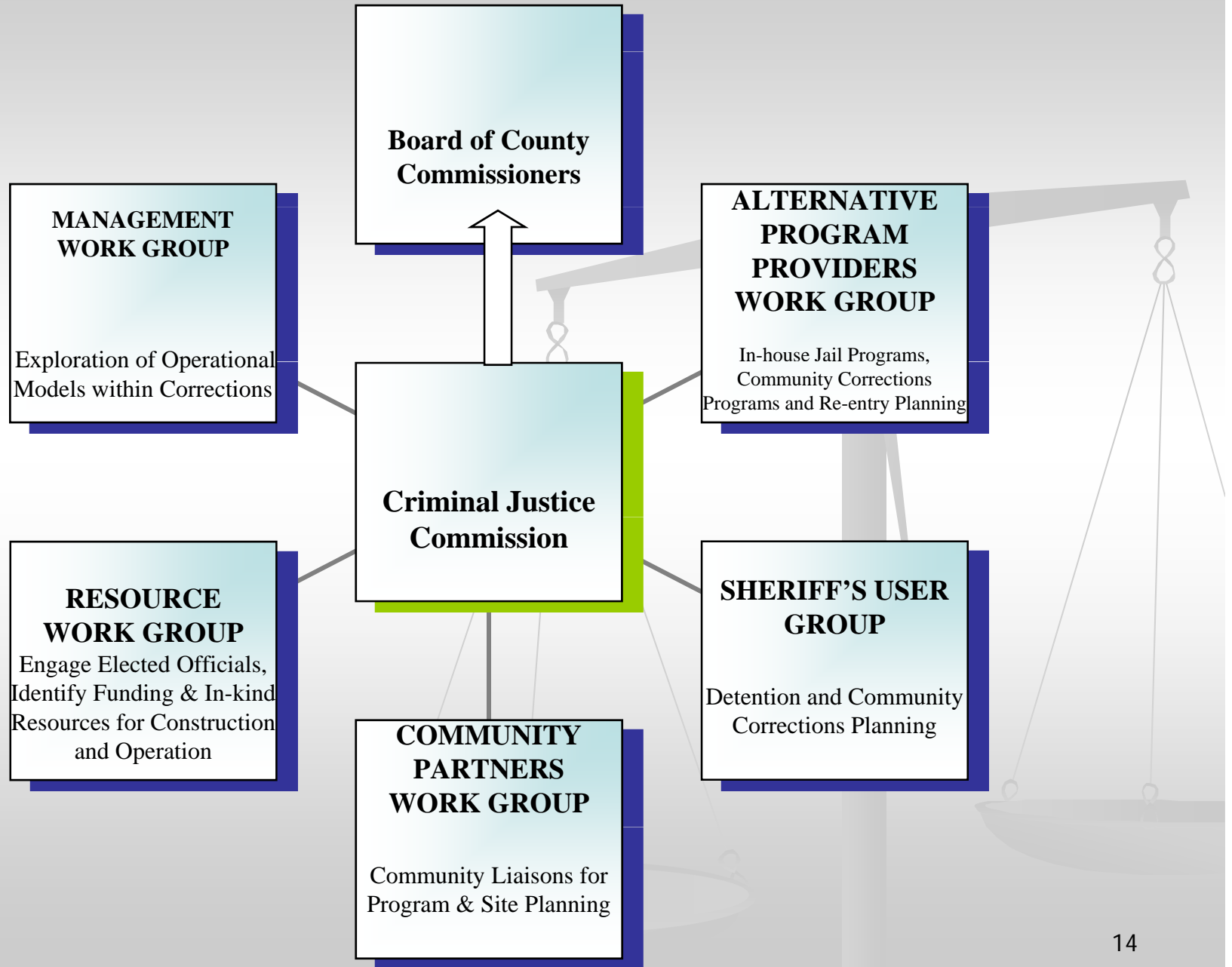
VIP-ER Program – Phase 2

- 61% of participants had been arrested and convicted in Sarasota County to program admission to the VIP-ER Program.
- Only 18% of VIP-ER Program graduates were arrested and convicted in Sarasota County within the 18 month period following graduation.
- After 36 months of operation, 29 classes have graduated with a 79% completion rate (346 participants out of 439)
- 54% are in stable housing 12 months post graduation
- 70% are still sober 12 months post graduation
- 84% of the last 8 graduating classes are working, with an average wage ranging from \$6.70-\$25.00 per hour, at positions such as sales associate, office assistant, restaurant manager, medical assistant, and registered nurse.

Future Initiatives

- Early Case Resolution Program
- Sentenced Defendant's Work Crew
- Justice Analysis Data System

Planning for the Future



Opportunities for Improvement

Criminal Justice Commission Work Groups explored best practices around the United States.

- Orange and Hillsborough Counties, Florida
- Davidson County, Tennessee (Nashville)
- Montgomery County, Maryland (Silver Spring)
- Washington County, Oregon (Hillsboro)



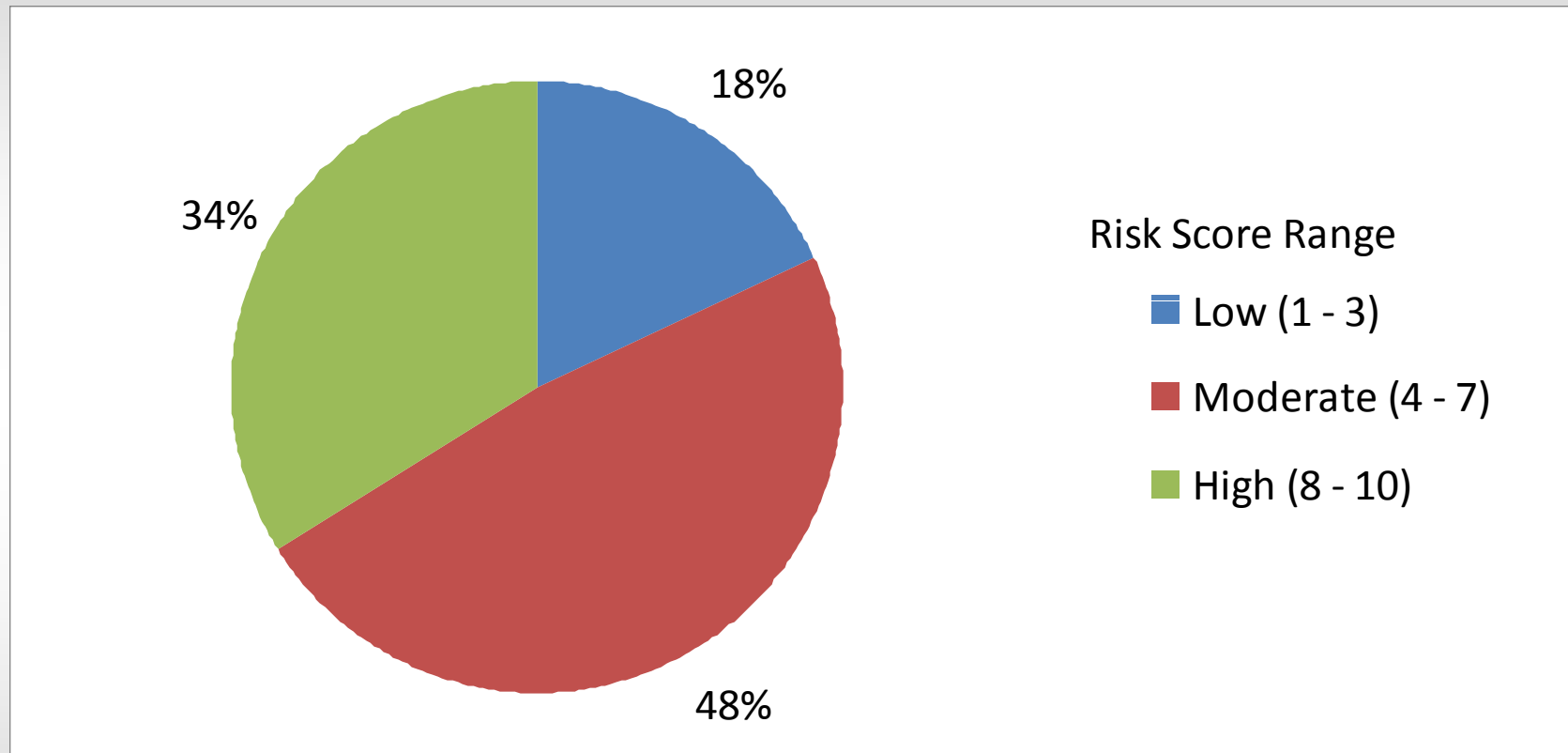
Inmate

Characteristics

By Recidivism Risk Level

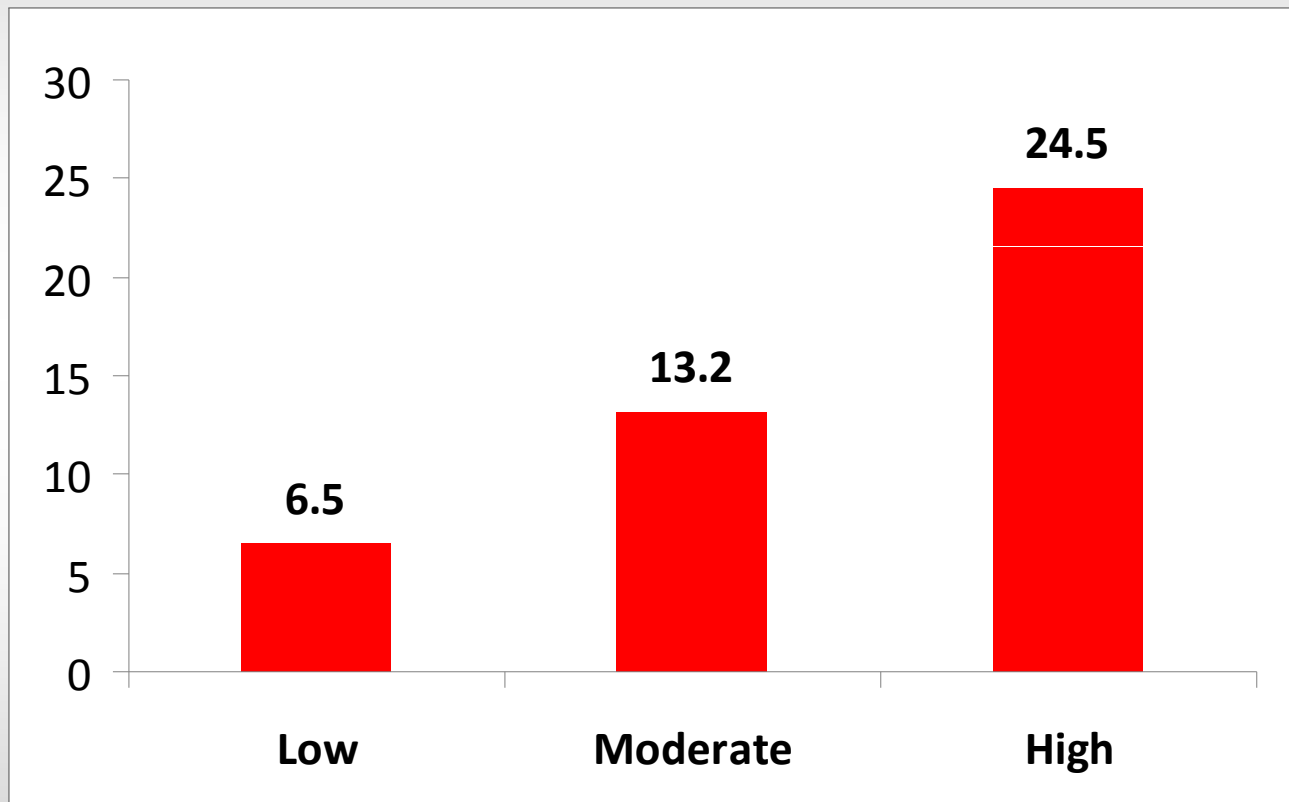
Evaluation of Assessments completed by David Bennett Consulting

Risk of Recidivism Levels*



*Calculated using the COMPAS risk assessment instrument.

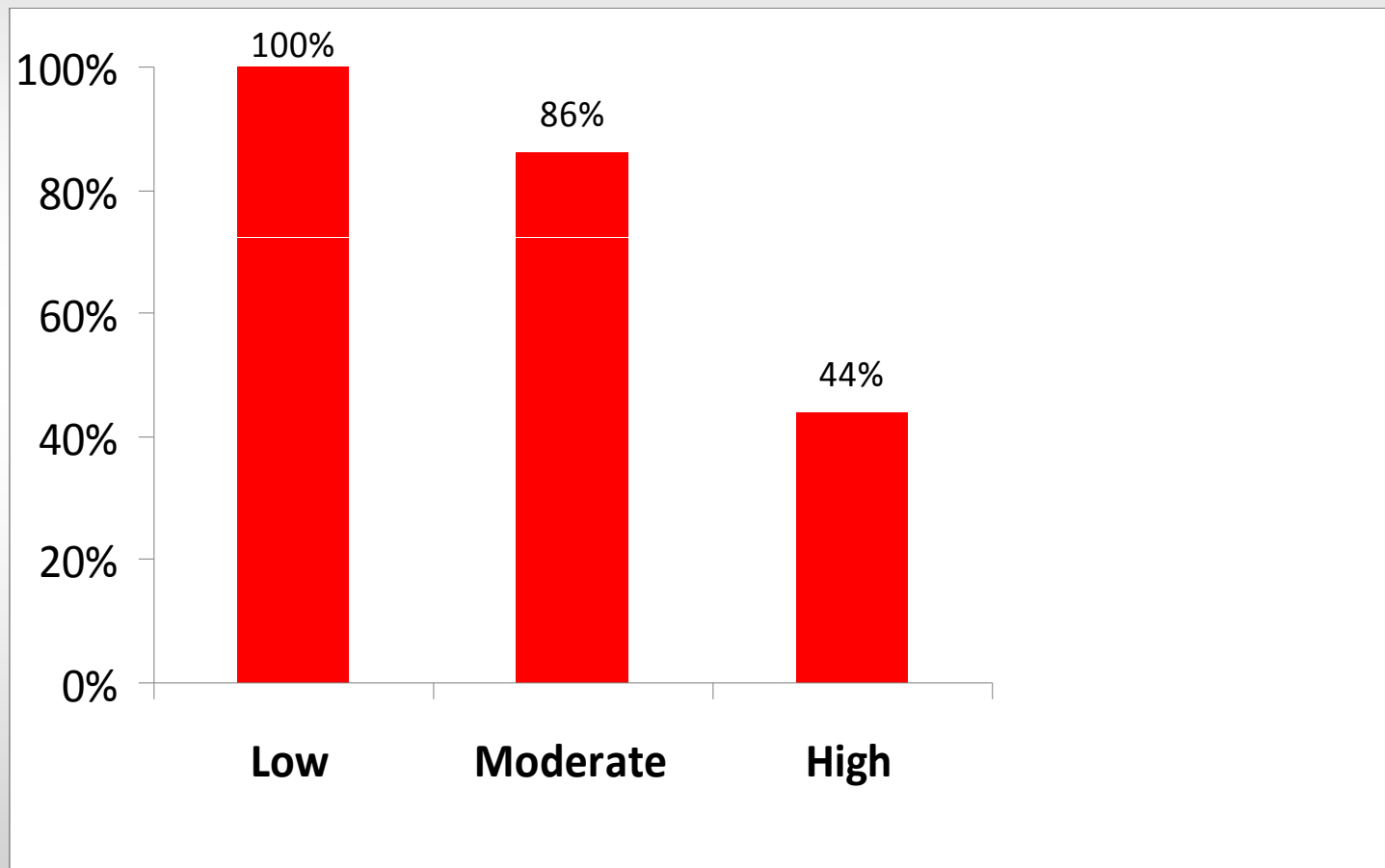
Average Prior Arrests



Risk of Recidivism

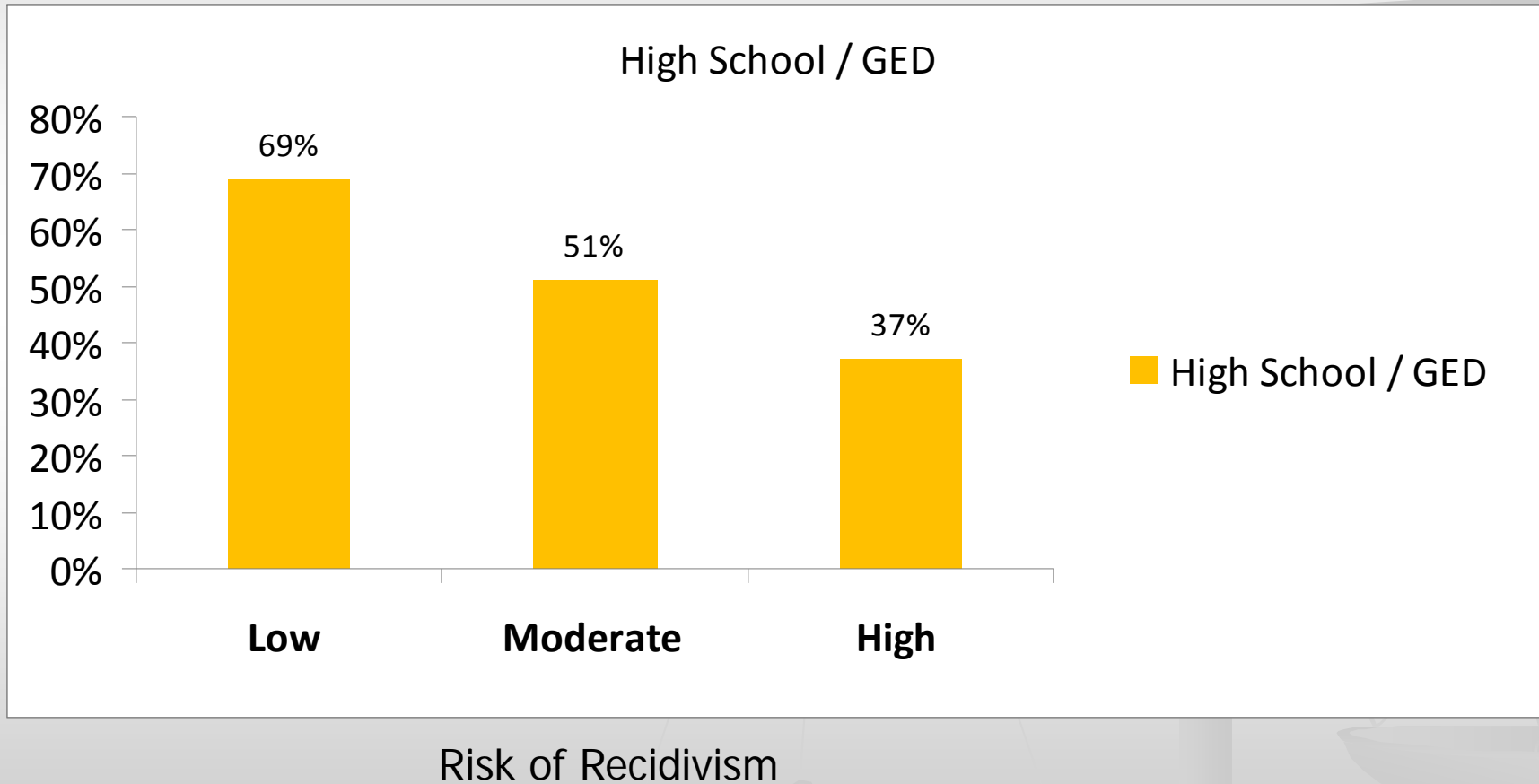
Vocation

(Had Job Prior to Incarceration)



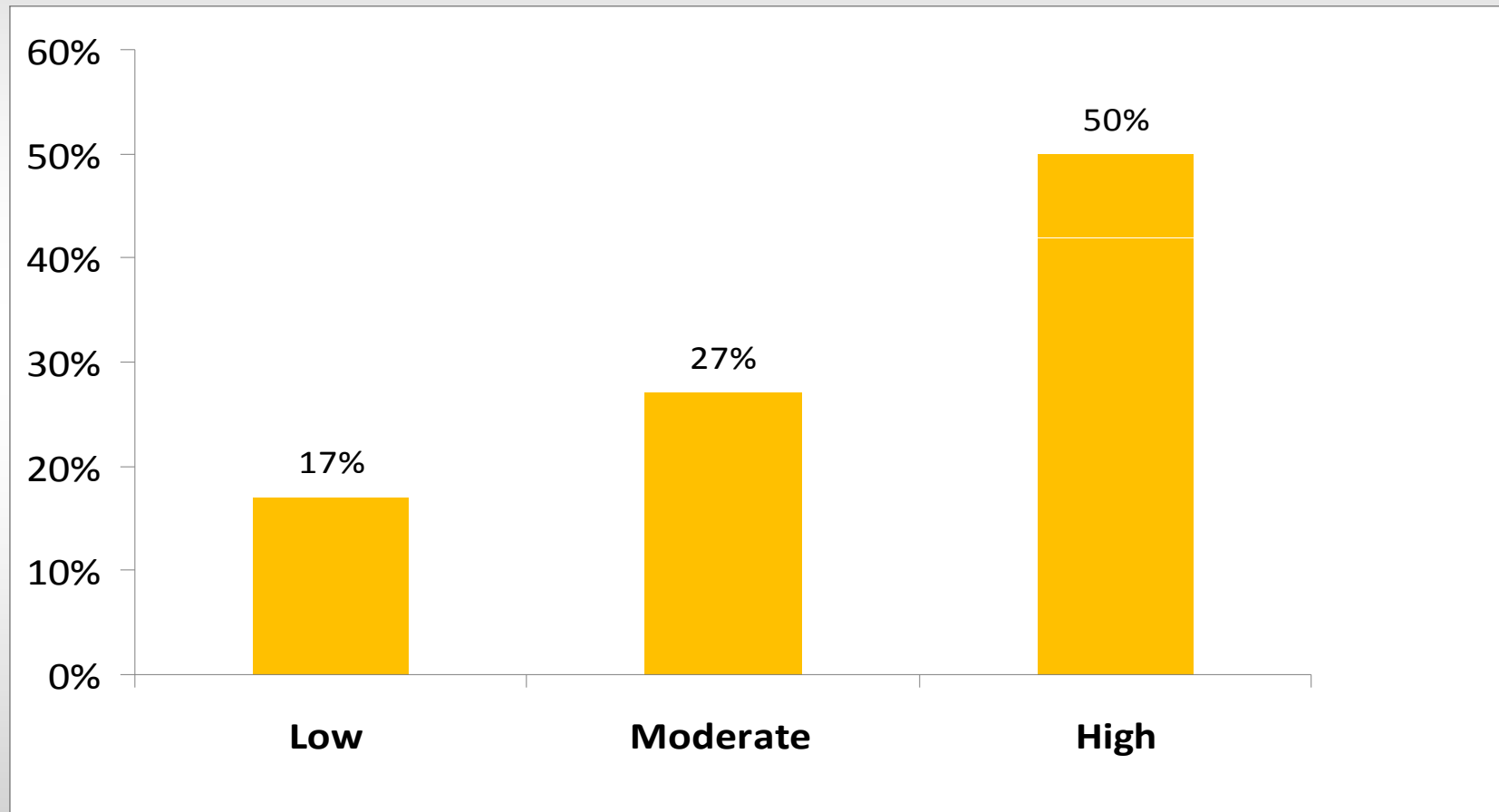
Risk of Recidivism

Education



Family

(Parent Previously Incarcerated)



Risk of Recidivism

Post-Release Housing

“Where will you live upon release?”:

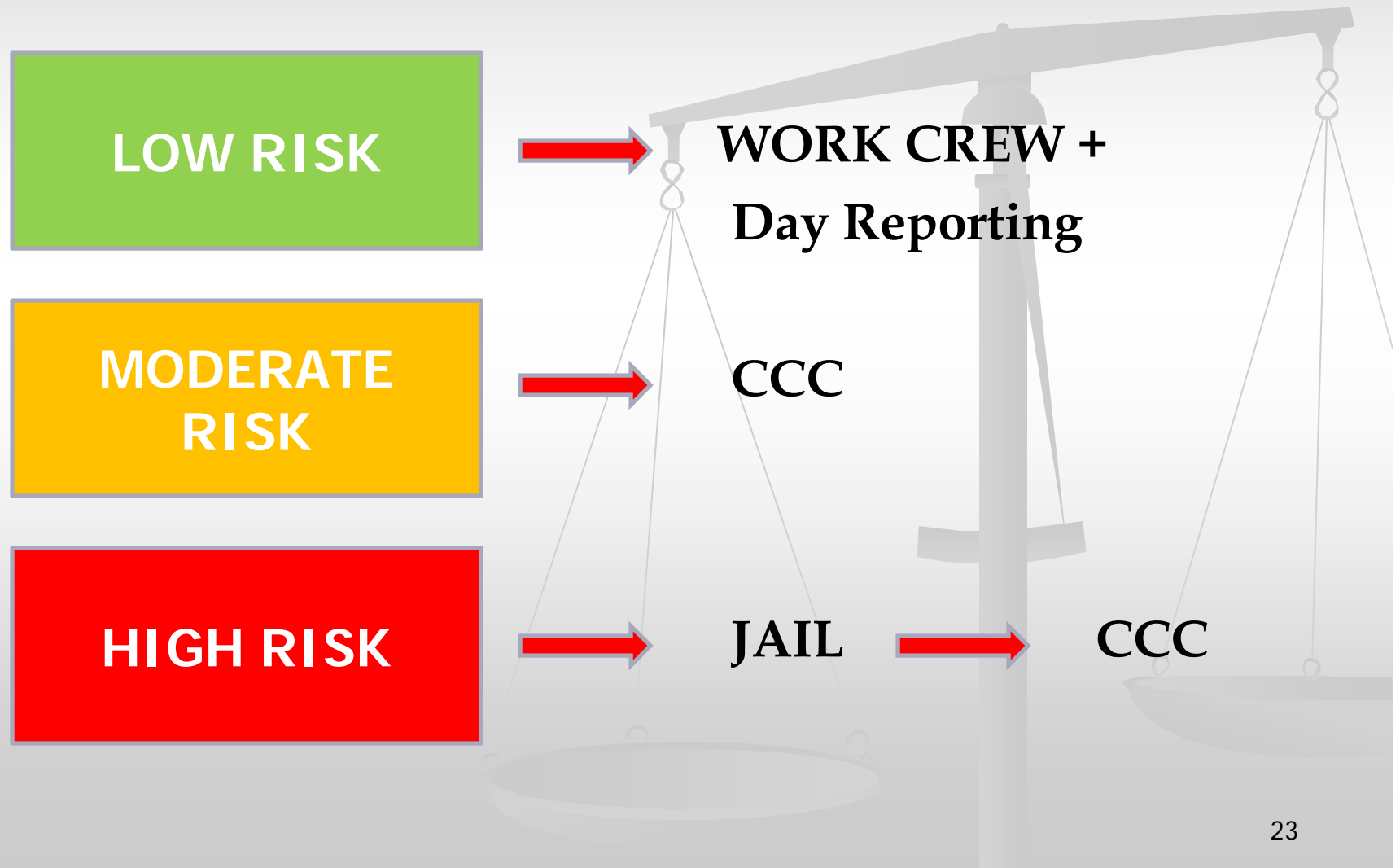
14% did not know where they would live.

Of these:

- *55% had been previously hospitalized for mental health issues*
- *27% were currently on medication for mental health issues*

Possible Risk Tracks

(Linking Risk to Policy Decisions)



Community Corrections Center (CCC)

Strategies For A New Approach To Reduce Recidivism

- Target selected high potential populations with evidence-based programs to provide treatment with the goal to reduce recidivism.
- Develop a system approach focused on risk.
- Create a philosophical approach that punishment can come in other forms than traditional jail for certain offenders.
- Establish re-entry planning to ensure offenders receive the treatment and the wraparound support upon release.
- Create alternatives to jail for those who can benefit.

Guiding Philosophy



- Community Corrections uses a community-based approach to help offenders successfully enter the community with the objective of reducing recidivism.
- Community Corrections represents a new and better way to address criminal justice system goals.

PROPOSED PROGRAMS

- Assessment
- Cognitive Skills
- Job / Education
- Substance Abuse Treatment
- Mentors
- Mental Health Services
- Anger Management
- Life Skills
- Family Reunification
- Re-entry Planning

Re-Entry Planning

- Every offender would leave the CCC with the following:
 - **Constructive Activity** (Job, Education, Child Rearing)
 - **Pro-Social Network** (Mentors, Support Groups, Sober Housing, etc.)
 - **Access to Treatment** (Mental Health, Substance Abuse, Medical, etc.)

Planning Process



Progress Report #1 – March 2008

Project Recognition, Needs Assessment,
Program Development, Definition and
Implementation Plan

Progress Report #2 – June 2008

Space Program and Adjacencies, Food and Laundry
Analysis, Preliminary Staffing Plan and Operating
Budget

Progress Report #3 – October 2008

Site Criteria, Preliminary Cost Estimates and Concept
Design

*Liebert and Associates contract tasks coincide
with project process.*

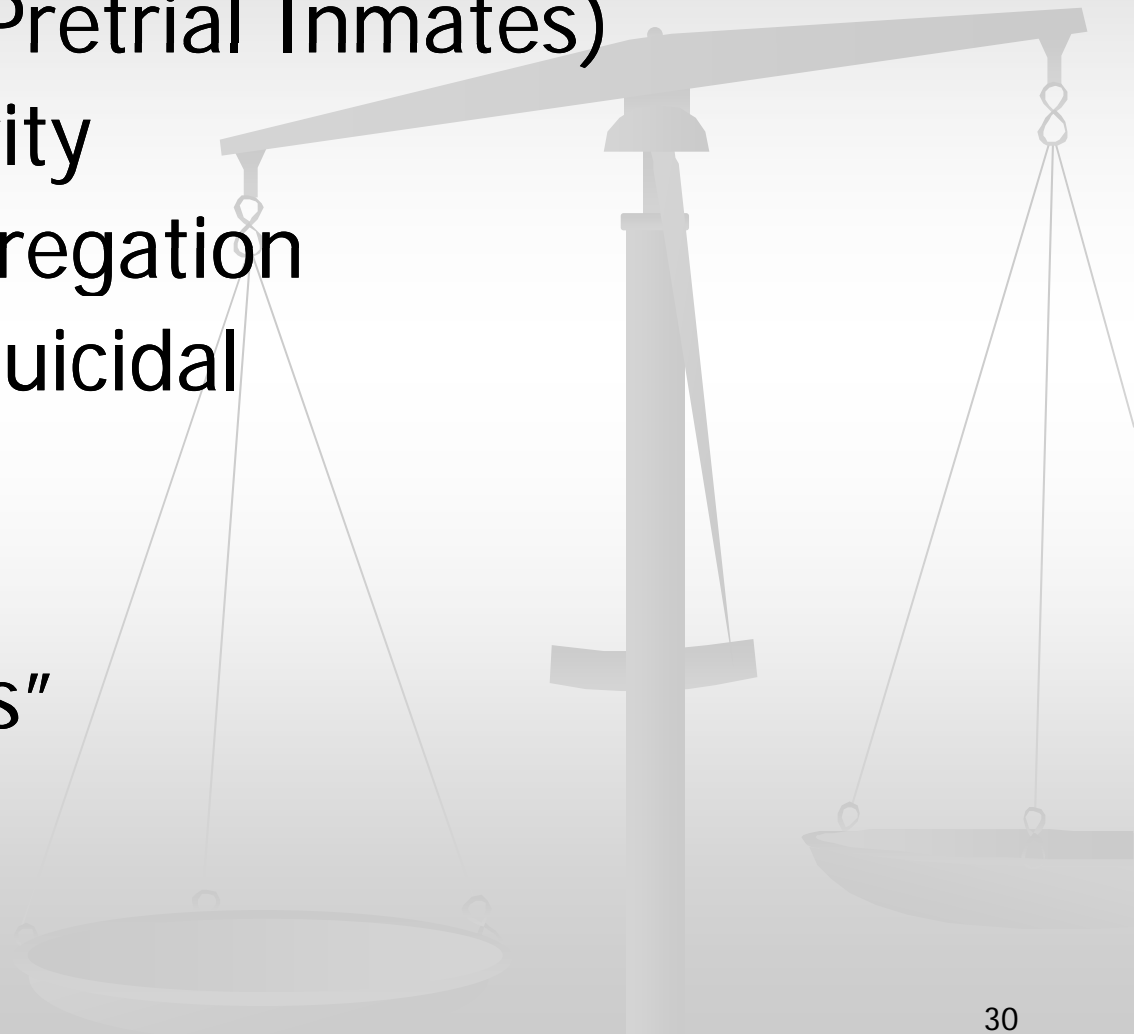
Planning for the Future

Bed Space Summary

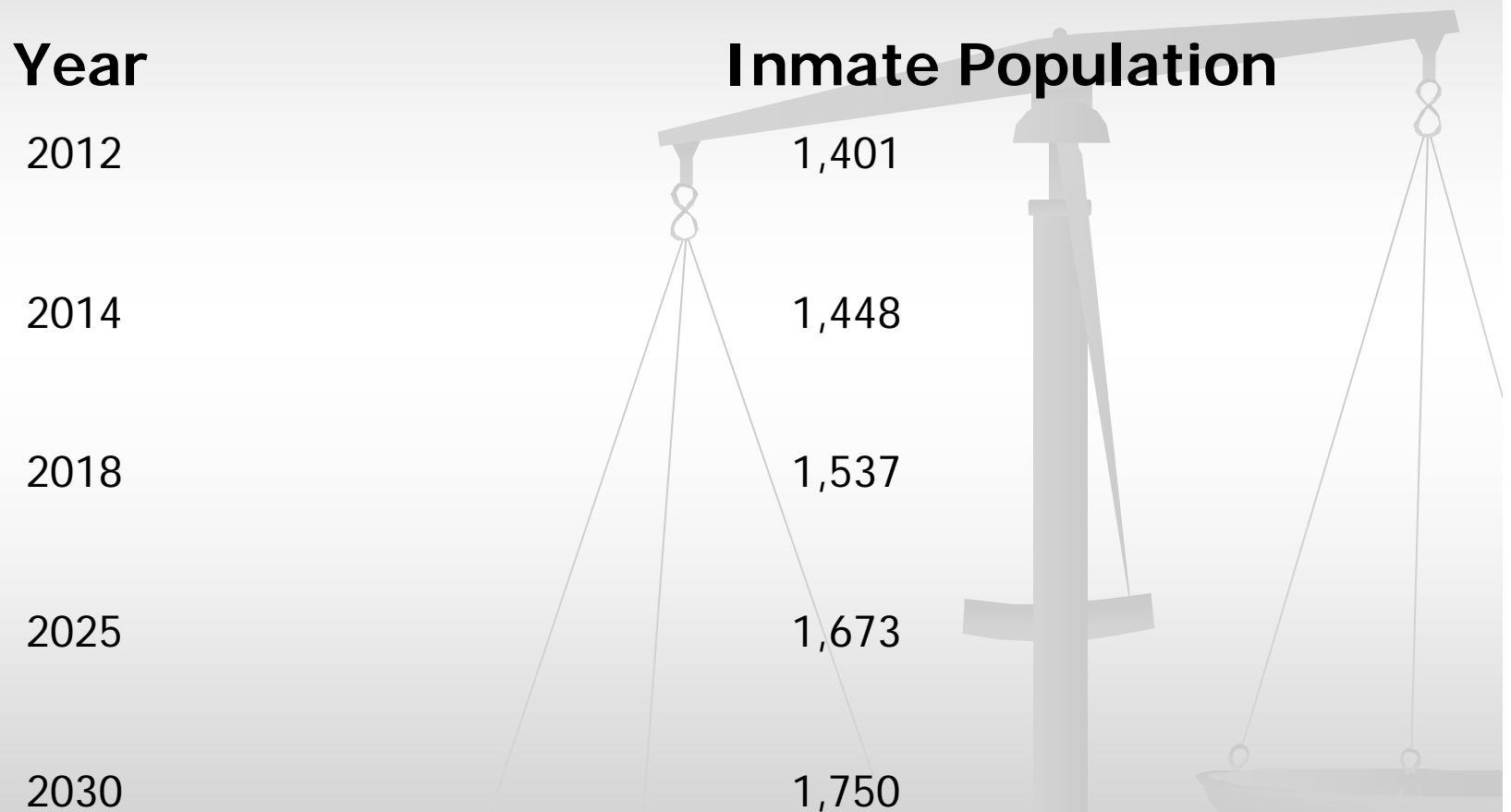
- Projected Need (2030) – 1,750 beds total
 - 256 Community Corrections Beds
 - 926 Downtown Jail
 - 572 New Medium/Minimum Secure Beds
 - 504 Dormitory
 - 32 Multiple Occupancy
 - 36 single cells
 - 128 Sentenced Beds, 444 Pretrial/Hold Beds

Use of Existing Jail

- 926 (Mostly all Pretrial Inmates)
- Maximum Security
- Disciplinary Segregation
- Mental Health/Suicidal
- Medical
- Juveniles
- "Keep Separates"
- Sex Offenders



Capacity Plan meets Inmate Projections



Yearly Inmate Projections developed by David Bennett Consulting

Planning Options



- CCC and Detention Center can be planned on two tracks:

- **TRACK # 1**

A prototype project for a reduced size CCC (possibly in an existing building) could open in 2010

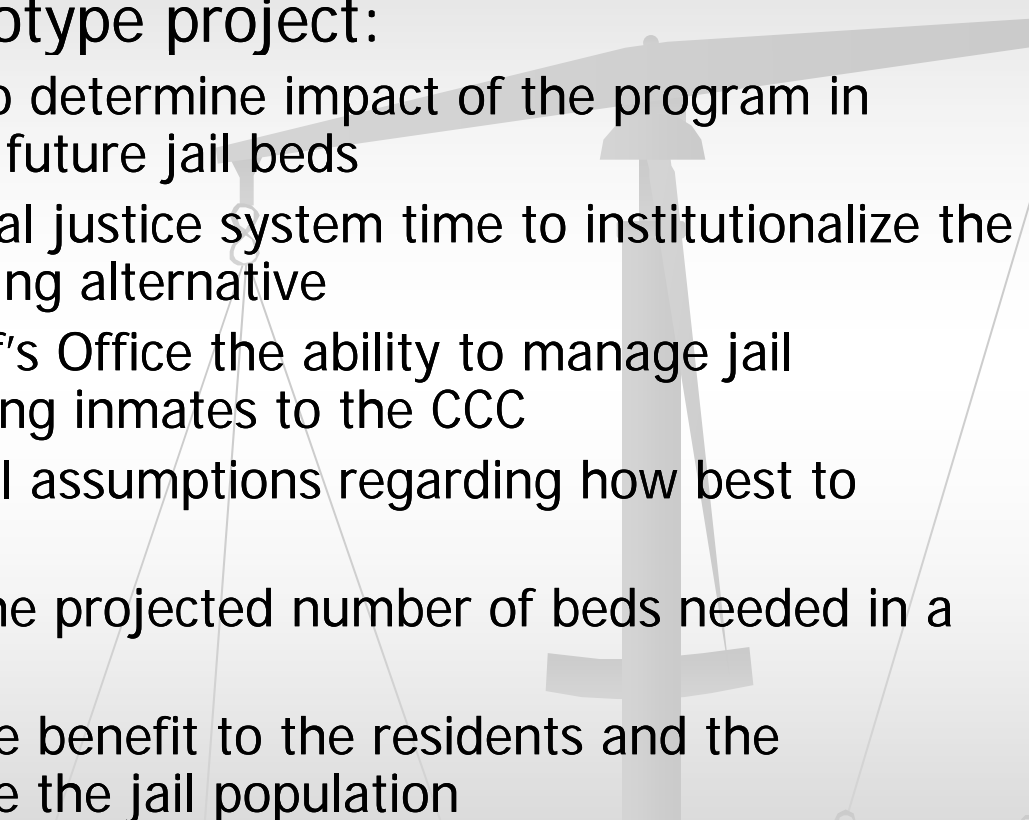
- **TRACK # 2**

A phase-in plan for new construction of both facilities on one site or two

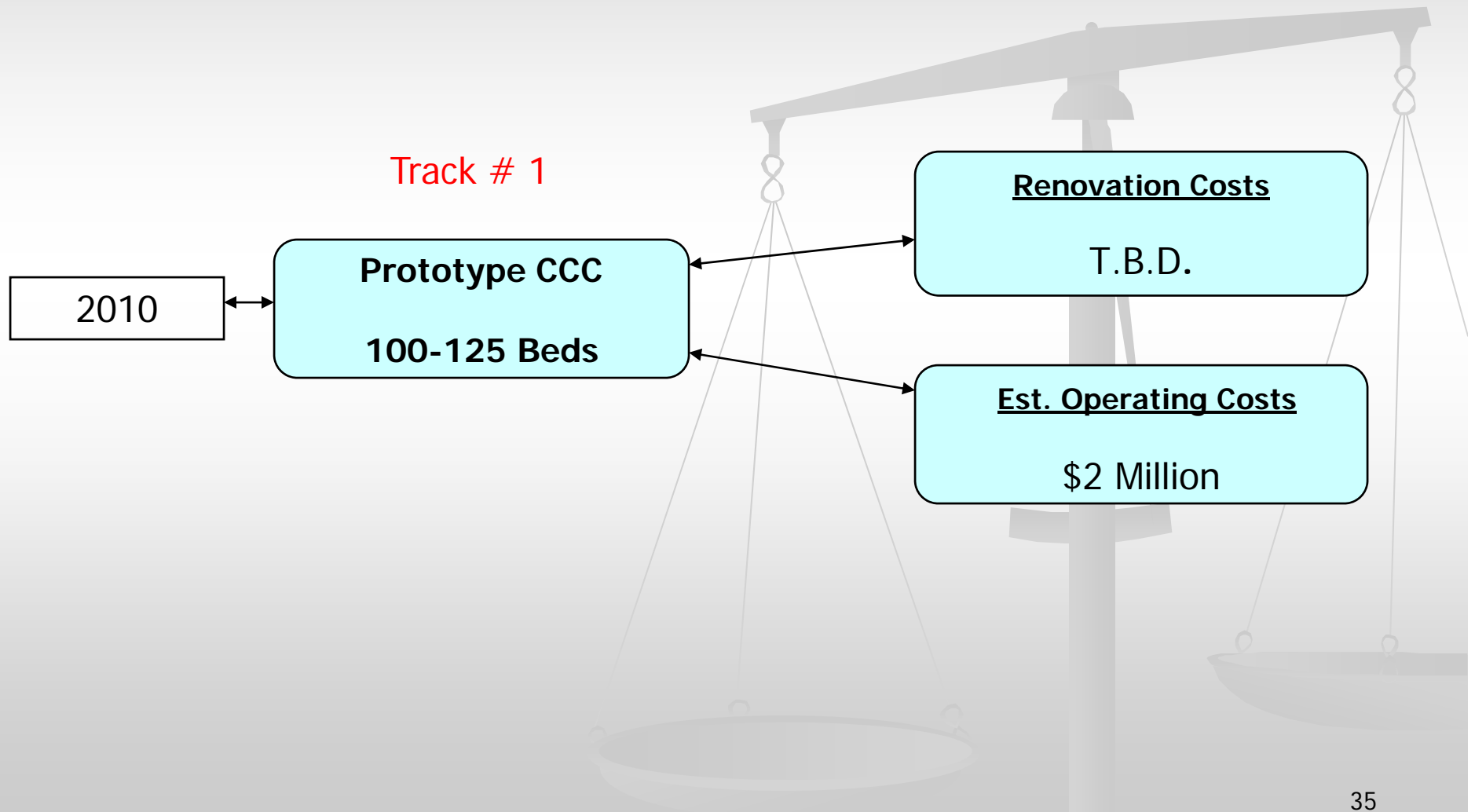
Planning Options developed by Liebert and Associates

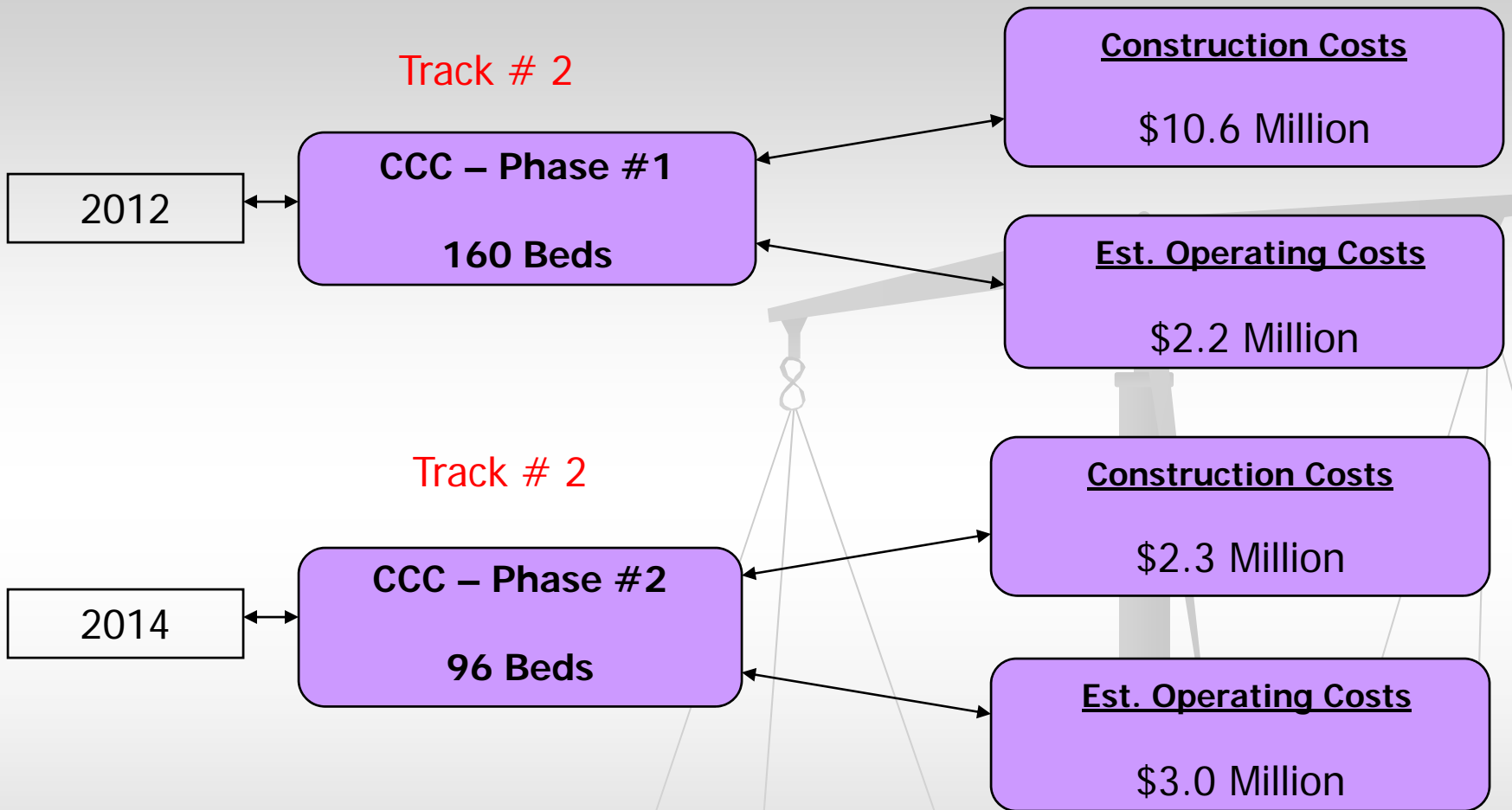
Track #1 – Prototype Project

- While planning and design continue on a new CCC and Detention Center...
 - A prototype project of a reduced size CCC could be opened in 2010
 - It could be in an existing space owned by the County, or
 - It could be in a leased space on a temporary basis
 - Options include but are not limited to:
 - An existing motel, office building, hospital, school or warehouse

- 
- Advantages of a prototype project:
 - Would allow County to determine impact of the program in reducing the need for future jail beds
 - Would give the criminal justice system time to institutionalize the program as a sentencing alternative
 - Would give the Sheriff's Office the ability to manage jail population by classifying inmates to the CCC
 - Would test operational assumptions regarding how best to manage a CCC
 - Would help validate the projected number of beds needed in a new CCC
 - Would have immediate benefit to the residents and the community and reduce the jail population

Community Corrections Center Phase-In Plan



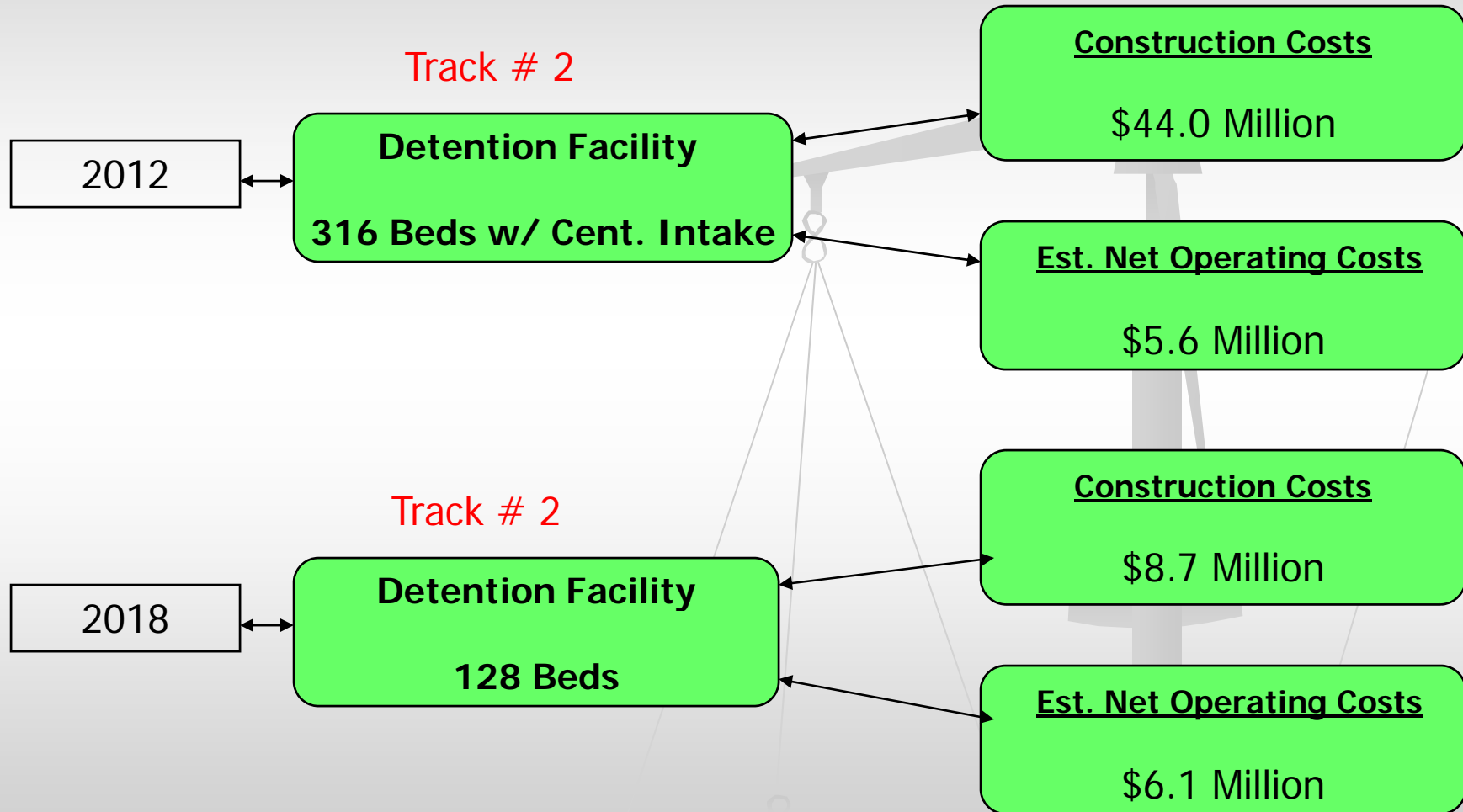


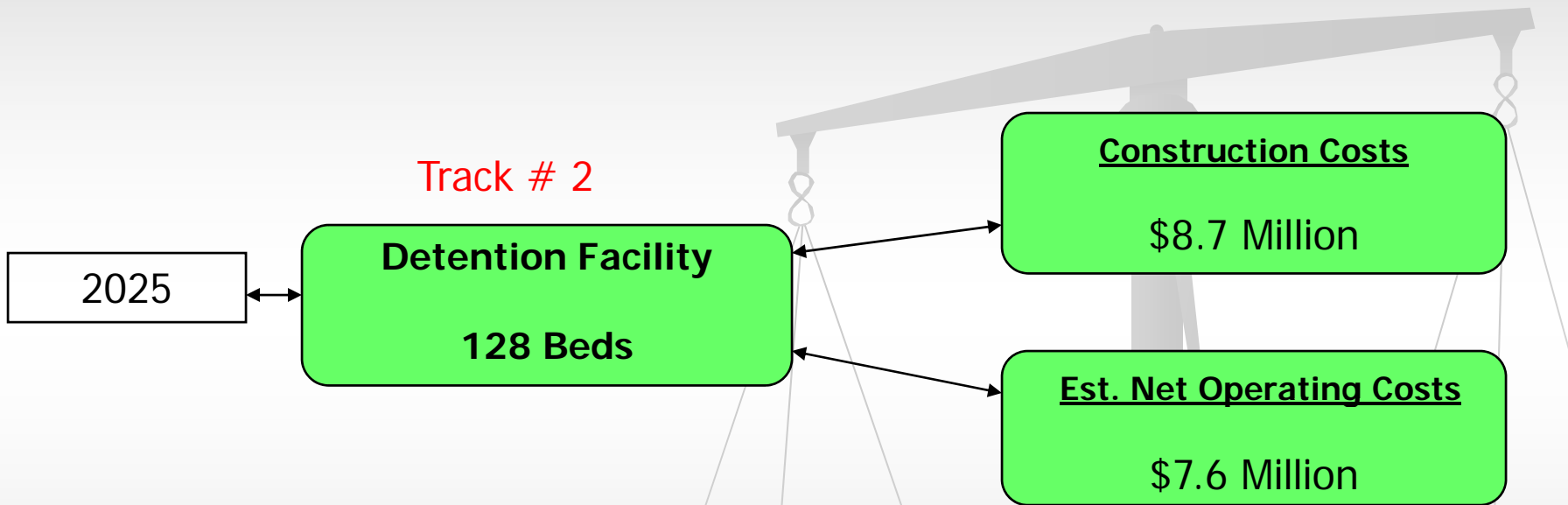
Completion in 2014:

Total 256 Beds - \$12.9 Million Construction Costs

\$3.0 Million Annual Operating Costs

Detention Facility Phase-In Plan – Option A



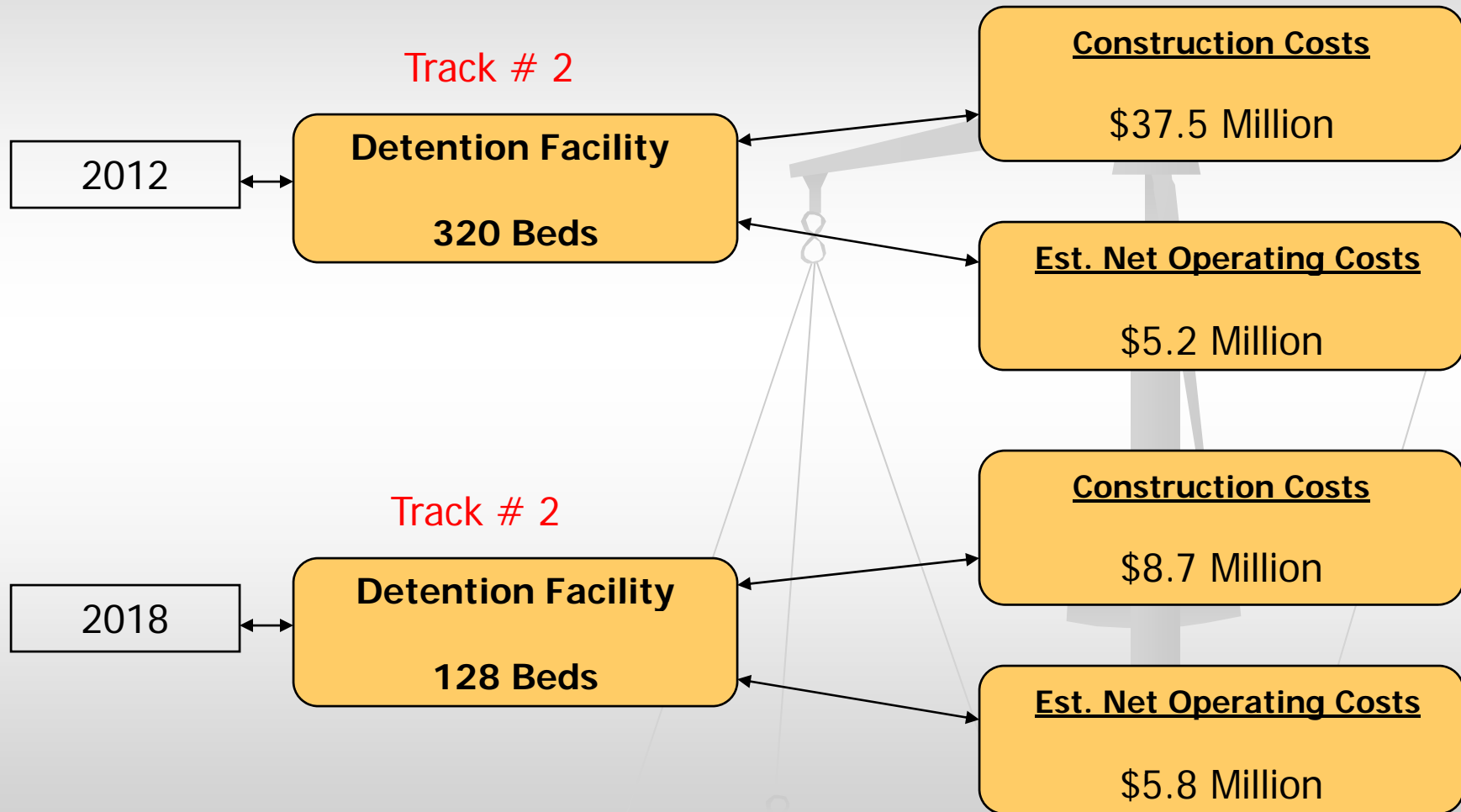


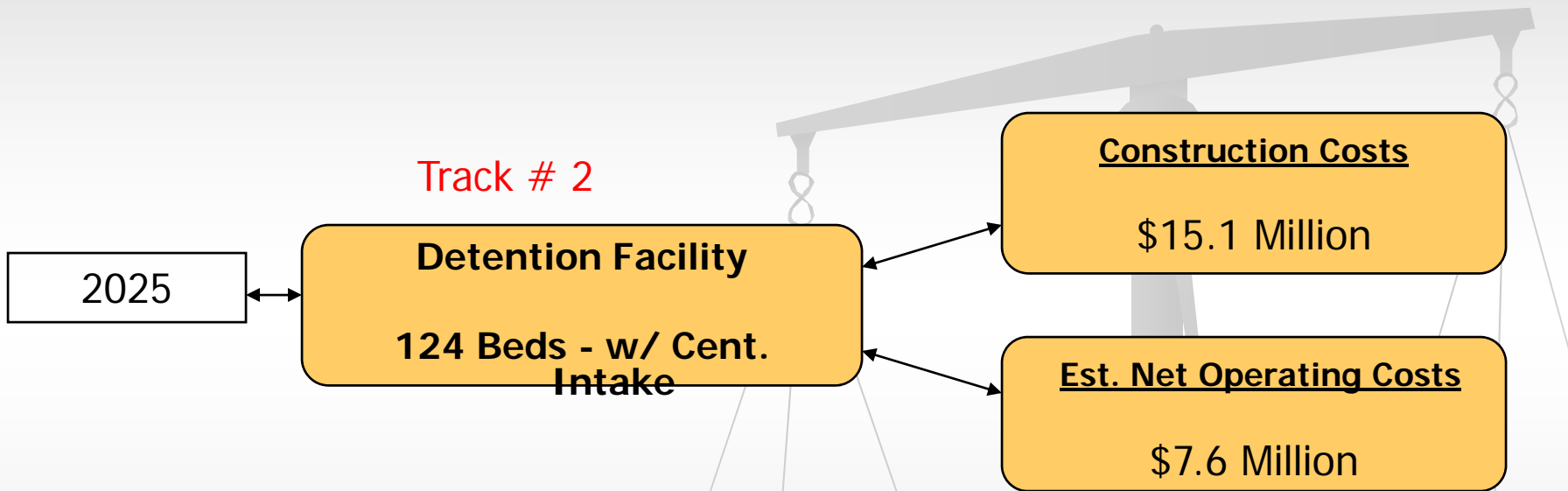
Completion in 2025:

Total 256 Beds - \$61.4 Million Construction Costs

\$7.6 Million Net Annual Operating Costs

Detention Facility Phase-In Plan – Option B





Completion in 2025:

Total 572 Beds - \$61.4 Million Construction Costs

\$7.6 Million Net Annual Operating Costs

Site Criteria Development

- A detailed site criteria matrix has been developed in conjunction with county staff and endorsed by the Criminal Justice Commission.
- Sites will be evaluated for the ability to support:
 - a stand alone Community Corrections Center
 - a stand alone Secure Detention Facility
 - a combined campus
- Criteria include:
 - Size
 - Location
 - Access
 - Ownership
 - Development Costs
 - Effect on Operational Costs
 - Environment Impact

Next Steps....

- Identify location for a prototype Community Corrections Center (CCC)
- Identify CCC Capital and Operating Costs for FY2010
- Identify and Rank Sites for future CCC and/or Secure Detention
- Refine Construction Cost Estimates
- Develop Site Master Plan
- Develop Communications Plan

Request Approval to Proceed with final phases of Liebert Contract to assist with some or all of the "next steps", a value of \$16,000.

Presentation to the Board – March 2009