

**Sarasota County School Board - Infrastructure Surtax Phase II
FY 2000 - FY 2009 Project Status/Update**

Section I - Functional Area:	FY00 Actual	FY01 Actual	FY02 Actual	FY03 Actual	FY04 Actual	FY05 Actual	FY06 Actual	FY07 Actual	FY08 Budget	FY09 Budget	FY00 - 09 Totals
Public Schools	\$ 3,580,866	\$ 10,846,328	\$ 4,225,209	\$ 13,760,159	\$ 23,339,935	\$ 14,572,250	\$ 15,297,079	\$ 9,984,342	\$ 34,340,248	\$16,869,001	\$ 146,815,417
Total Allocations:	\$ 3,580,866	\$ 10,846,328	\$ 4,225,209	\$ 13,760,159	\$ 23,339,935	\$ 14,572,250	\$ 15,297,079	\$ 9,984,342	\$ 34,340,248	\$16,869,001	\$ 146,815,417

Revenues: ☉	\$ 8,385,209	\$ 12,962,592	\$ 12,607,412	\$ 12,905,491	\$ 14,061,293	\$ 15,714,793	\$ 17,087,142	\$17,332,985	\$ 17,600,000	\$18,158,500	\$ 146,815,417
--------------------	---------------------	----------------------	----------------------	----------------------	----------------------	----------------------	----------------------	---------------------	----------------------	---------------------	-----------------------

Section II - Project Allocations on Original List:	FY00 Actual	FY01 Actual	FY02 Actual	FY03 Actual	FY04 Actual	FY05 Actual	FY06 Actual	FY07 Actual	FY08 Budget	FY09 Budget	FY00 - 09 Totals
ADA Compliance	\$ 10,000	\$ -	\$ 18,750	\$ 15,113	\$ 33,178	\$ 33,941	\$ 1,817	\$ -	\$ 5,000	\$ -	\$ 117,799
Adult and Community Education ☉	-	-	-	-	-	-	-	-	-	-	\$ -
Ashton Elementary	119,447	-	-	-	-	-	-	-	-	-	\$ 119,447
Booker High	-	-	-	-	-	-	-	-	-	-	\$ -
Brentwood Elementary	956,091	662,239	750	-	674,750	-	-	-	-	-	\$ 2,293,830
Brookside Middle School	281,802	1,489,809	-	-	-	-	-	-	-	-	\$ 1,771,611
Computer Upgrades	-	-	17,700	462,939	419,304	279,041	1,864,472	1,277,023	3,056,564	1,470,000	\$ 8,847,043
Equipment	-	-	-	183,972	1,381,640	585,734	1,799,711	79,929	188,795	454,001	\$ 4,673,782
Garden Elementary	-	202,057	264	-	-	-	-	-	-	-	\$ 202,321
Gulf Gate Elementary	234,755	1,483,636	534,428	148,243	7,603	2,017	-	-	-	-	\$ 2,410,682
Lakeview Elementary ☉	-	-	-	-	-	-	-	-	-	-	\$ -
Laurel Nokomis School	-	389	-	-	-	-	-	69,647	3,000,000	-	\$ 3,070,036
McIntosh Middle School	107,109	2,037	-	-	-	-	-	-	-	-	\$ 109,146
Maintenance and Repair of Facilities	-	498,006	553,276	591,939	734,386	1,663,614	562,903	964,848	3,077,747	3,100,000	\$ 11,746,719
Motor Vehicles and School Buses	130,328	8,213	-	-	1,490,372	782,207	645,275	922,230	2,028,183	1,145,000	\$ 7,151,808
North Port High School	11,420	5,521,978	-	29,633	60,825	341,920	50,424	730	3,015	1,200,000	\$ 7,219,945
Palmer Ranch Elementary ☉	-	-	-	-	-	-	-	-	-	-	\$ -
Phillippi Shores Elementary	-	276	-	-	80,046	16,170	-	-	-	-	\$ 96,492
Recurring Capital	-	95,697	337,264	389,851	116,873	195,438	826,087	-	-	-	\$ 1,961,210
Riverview High School	1,670,308	603,472	-	-	-	-	946,963	2,358,683	14,214,847	-	\$ 19,794,273
Sarasota County Technical Institute ☉	-	-	-	-	-	-	-	-	-	9,500,000	\$ 9,500,000
Sarasota High School	57,270	-	416,606	303,349	41,794	7,231	-	1,074,882	8,806	-	\$ 1,909,938
Tatum Ridge Elementary (Palmer Blvd)	-	-	-	22,922	957	461,689	1,163,046	(4,696)	31,115	-	\$ 1,675,033
Venice Elementary	-	274	3,630	-	104,964	-	-	-	2,051	-	\$ 110,919
Venice High School	-	-	-	-	-	-	-	-	-	-	\$ -
Wilkinson Elementary School	2,336	120,063	1,200	-	69,292	-	-	-	-	-	\$ 192,891
Totals Per Year:	\$ 3,580,866	\$ 10,688,146	\$ 1,883,868	\$ 2,147,961	\$ 5,215,984	\$ 4,369,002	\$ 7,860,698	\$ 6,743,276	\$ 25,616,123	\$16,869,001	\$ 84,974,925

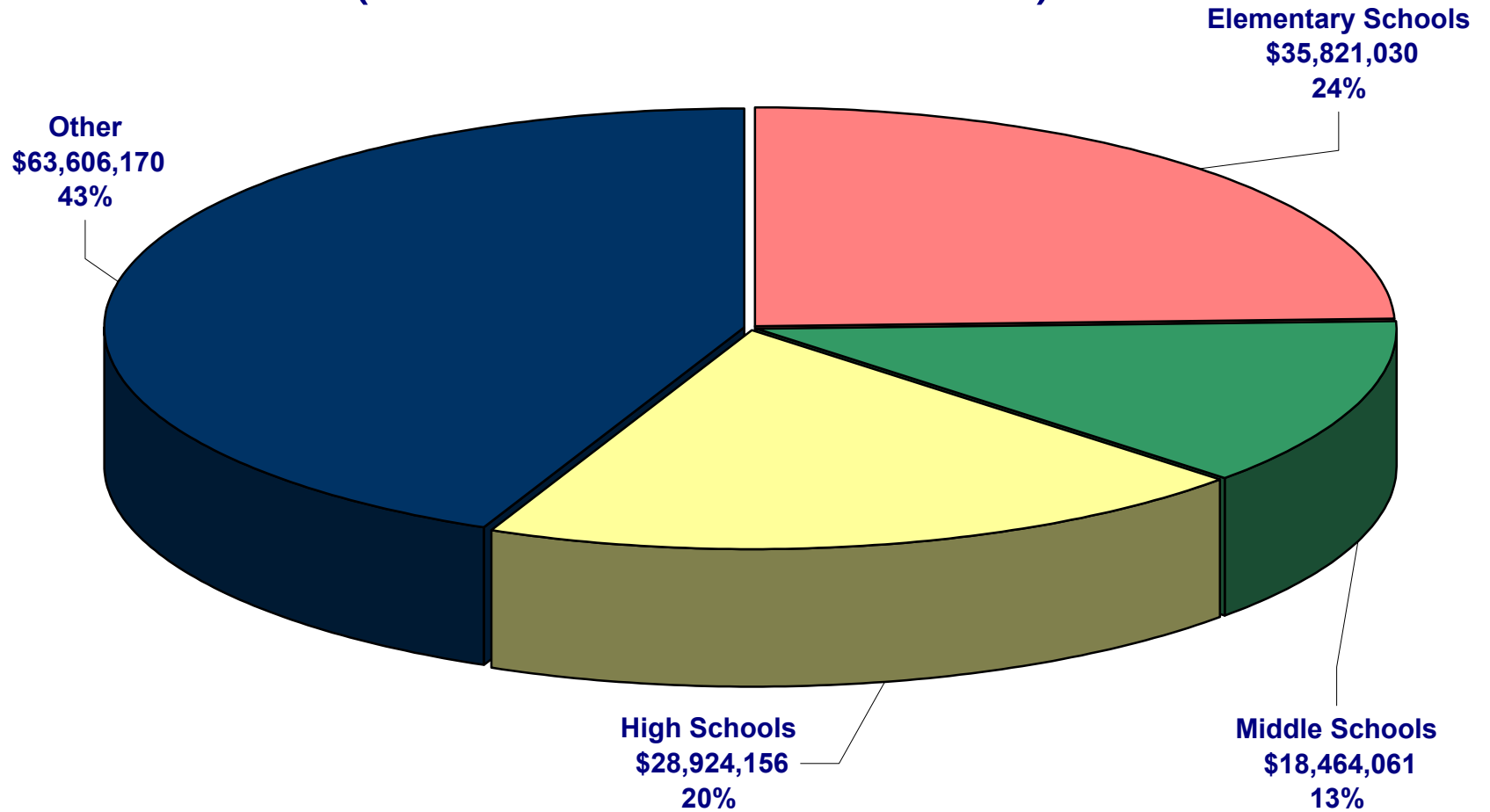
Section III - Project Allocations <u>NOT</u> on Original List:	FY00 Actual	FY01 Actual	FY02 Actual	FY03 Actual	FY04 Actual	FY05 Actual	FY06 Actual	FY07 Actual	FY08 Budget	FY09 Budget	FY00 - 09 Totals
Booker Middle School	\$ -	\$ -	\$ -	\$ -	\$ 2,898,415	\$ 300,000	\$ -	\$ -	\$ -	\$ -	\$ 3,198,415
Cranberry Elementary School (Elem 'G')	-	-	-	2,237,596	-	88,281	-	-	-	-	\$ 2,325,877
Glenallen Elementary	-	-	-	-	-	293,051	4,042,661	2,759,790	214,218	-	\$ 7,309,720
Heron Creek Middle School	-	1,636	1,670,415	8,438,566	-	33,445	540,415	-	-	-	\$ 10,684,477
Larmarque Elementary School	-	-	-	-	-	-	25,280	90,420	2,000	-	\$ 117,700
North Port Middle-2 / Future School	-	-	-	-	-	500,000	-	-	2,196,099	-	\$ 2,696,099
North Port 5th Elementary	-	-	-	-	-	-	-	-	5,068,671	-	\$ 5,068,671
Phoenix Academy	-	-	-	-	2,230,312	2,130,260	-	-	-	-	\$ 4,360,572
Pine View School	-	-	-	-	3,715,600	531,082	11,418	-	-	-	\$ 4,258,100
Portables/Moving and Equipment	-	117,940	670,926	935,535	9,278,177	5,764,636	2,061,284	101,902	677,409	-	\$ 19,607,809
Southside Elementary School	-	-	-	-	-	561,988	755,323	284,641	565,728	-	\$ 2,167,680
Tuttle Elementary School	-	38,606	-	501	1,447	505	-	-	-	-	\$ 41,059
Venice Middle School	-	-	-	-	-	-	-	4,313	-	-	\$ 4,313
Totals Per Year:	\$ -	\$ 158,182	\$ 2,341,341	\$ 11,612,198	\$ 18,123,951	\$ 10,203,248	\$ 7,436,381	\$ 3,241,066	\$ 8,724,125	\$ -	\$ 61,840,492

Totals Per Year (All Projects):	\$ 3,580,866	\$ 10,846,328	\$ 4,225,209	\$ 13,760,159	\$ 23,339,935	\$ 14,572,250	\$ 15,297,079	\$ 9,984,342	\$ 34,340,248	\$16,869,001	\$ 146,815,417
--	---------------------	----------------------	---------------------	----------------------	----------------------	----------------------	----------------------	---------------------	----------------------	---------------------	-----------------------

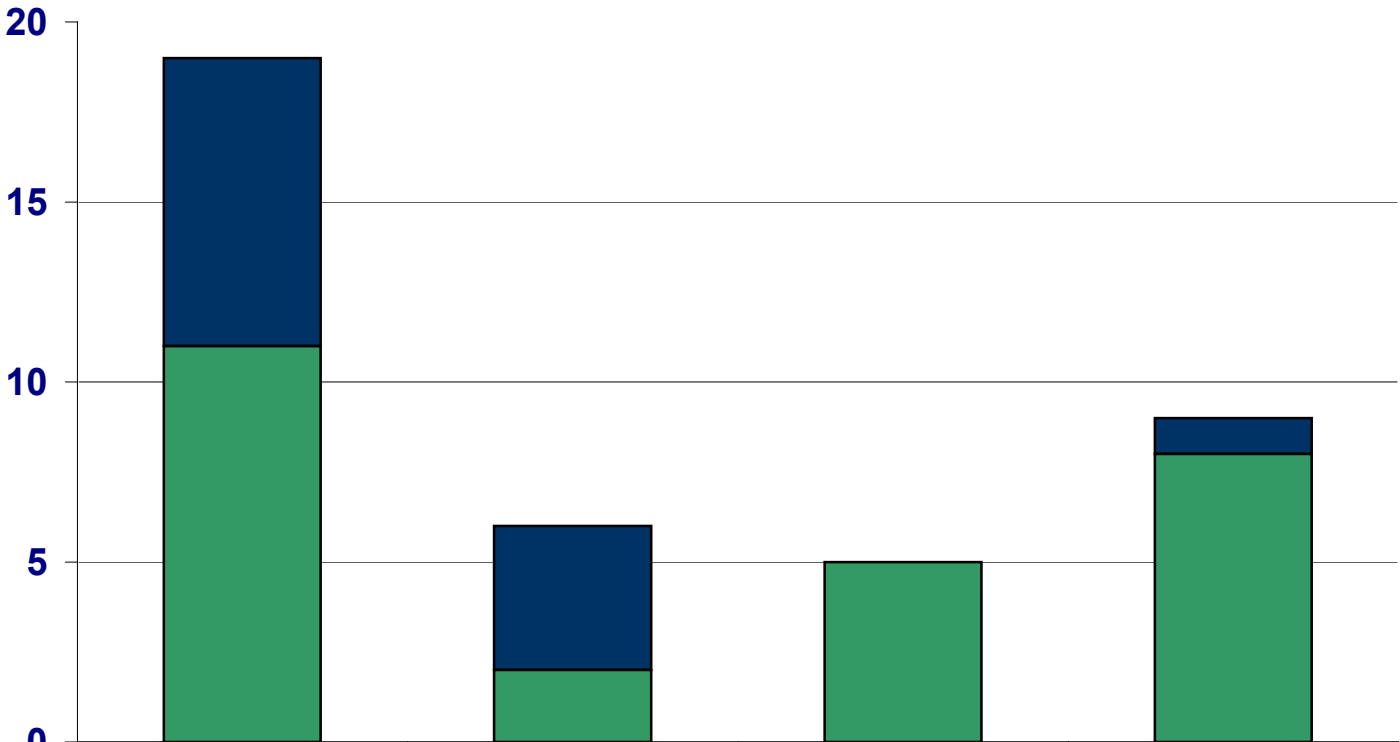
Footnotes:

- ① Funds were transferred to other shown projects
- ② Revenue includes interest income

Sarasota County School Board Allocations (\$146,815,417 in total)



Sarasota County School Board Project Totals by Type



	Elementary Schools	Middle Schools	High Schools	Other
■ "Additional" List	8	4	0	1
■ "Original" List	11	2	5	8